

THE sharp TRAVELLER

**COME ALIVE IN
THE SOUTHERN
GRAMPIANS!**



HOLIDAYS



A NEW DESTINATION

ACTIVITIES



SPRING RACING AT
DUNKELD

FOOD



BURNIE'S DELICIOUS
SURPRISES

EVENTS



PORTLAND ANNUAL
WHALE FESTIVAL

Refer a Friend & WIN!

When you refer your friends to Sharp Airlines you and your Friend can benefit! To go in the running to

win \$1000 of Sharp Travel

all you need to do is refer up to 5 people to Sharp Airlines. Those referred and become a SharpFlyer will also go into the running to win an additional \$1000 of Sharp Travel.

Sharp Airlines is also rewarding the people who refer the most friends!

We will give away some fantastic prizes to the person who refers the most friends and there is no limit to the amount of people who you can refer, the more people you refer the higher the odds are of winning!

So what are you waiting for?

Tell your Facebook friends, tell your work friends, tell your Twitter friends, tell your social group of friends, tell your client database, tell anyone you know because the more people you refer the higher opportunity you have of winning!!

How to Enter:

To be eligible you must provide a valid email address of up to 5 friends or family members who are NOT SharpFlyers. Sharp Airlines staff including sub contractors and their immediate families are not eligible to enter the draw.

Those referred and become a SharpFlyer will also go into the running to win an additional \$1000* of Sharp Travel.

Winners will be notified by email, the draw for the Referrer and the referred who become SharpFlyers will be made on 30 November 2012 and will be posted on the Sharp Airlines website.

To be eligible for any of the above prizes you must be a SharpFlyer.

To enter visit – sharpairlines.com.au/friends



Contents

- What's On 5
- The Sharp Files 6
- An Island Fit for a King - King Island 8
- Southern Grampians 11
- Ten Days on the Island. 14
- Burnie. 16
- Upwelling Festival 18
- Recipes 20
- Business Profile 21
 - › Boutique Heidi - A Handkerchief for Christmas?. . . 21
- Sharp Minds 22
- Sharp Kids 23
- Flight Schedules 24
 - › Melbourne (Essendon) 24
 - › Adelaide 25
 - › Flinders Island & Launceston 25
 - › King Island 25
- Where we Fly 26

STONE

BUSINESS ADVISERS &
CHARTERED ACCOUNTANTS

- Business Advisory
- Accounting
- Taxation
- Financial Management
- Superannuation
- Corporate Affairs
- Consulting



“We have developed a young team of highly skilled professionals to support your business.”



P + 61 3 5523 2287
W stoneba.com.au

ADELAIDE

PORTLAND

MELBOURNE



Welcome

Dear Sharp Travellers

I hope that you enjoy this edition of Sharp Traveller. Spring and summer come with a sense of hope and renewal and our Sharp Airlines destinations are a perfect compliment to the change in season.

Sharp Airlines is now flying to the perfect spring and summer destinations of Burnie and King Island. A sunny spring bike ride about King Island sounds like a great way to celebrate the season and with our flights there is no excuse not to experience this unique island. Burnie is the perfect place to base yourself and plan a trip around the west of Tasmania, including a visit to the amazing Cradle Mountain, which is best traversed in the summer months.

This edition of Sharp Traveller will help you find out how to make the most

of spring and summer in our other destinations, whether it be smelling the wild flowers of the Southern Grampians, having a flutter at the Dunkeld Cup, or learning about the amazing aquatic environment off the Portland coast.

Don't forget our top 10 most regular SharpFlyers will win a \$50 Sharp Airlines travel voucher. Through your SharpFlyer membership we will record the number of times you fly with us, and you will go into the running for the Top Flyer voucher.



Malcolm Sharp
Director

For easier, friendlier shopping, say Hello to your friends at Essendon Fields Shopping Centre (adjacent to Essendon Airport Terminal)



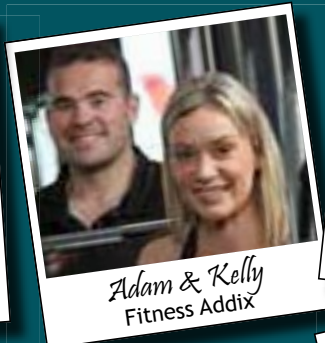
Jayden & Tony
Blue Denim Cafe



Tania
Brrish For Hair



Cathy
cdp For Hair



Adam & Kelly
Fitness Addix



Mervyn & Rosie
Nandos



Janice
Ookii Sushi



Ronnie
Pharmasave




Yvonne & Anouk
Snap Printing



Dhruva
Subway



Jessica
Top One Bakery

Like us on  facebook/essendonfields
and stay in touch with specials

**ESSENDON
FIELDS**
www.essendonfields.com.au
9948 9400

ADELAIDE

Adelaide Fringe

22 February - 17 March

Adelaide Fringe is the largest arts event in the Southern Hemisphere, held over 24 summer days and balmy nights. The 900 events literally take over the city, staged in pop-up venues in parks, warehouses, laneways & disused buildings as well as theatres, hotels, art galleries and cafes.

See exciting and contemporary work in art forms spanning cabaret, comedy, circus and physical theatre, dance, film, theatre and puppetry, music, visual art and design.

adelaidefringe.com.au

PORTLAND

Cape Nelson Light House

Imbued with a rich nautical history, Cape Nelson Lighthouse was witness to many high seas dramas in the 1800's. Still in operation today the lighthouse offers refurbished contemporary accommodation in a site that features spectacular views and a hint of the romance of past nautical history. Guided tours operate at 11.00am and 2.00pm daily.

The gourmet café is open for lunches, morning and afternoon teas. Dine in the converted bluestone stables in an atmosphere of relaxed comfort. Only 10 minutes drive from Portland, the precinct offers spectacular views of the Capes, and the opportunity to view Southern Right and Humpback whales in winter and Blue whales in summer.

capenelsonlighthouse.com.au



FLINDERS ISLAND

Unavale Winery – Music in The Vines

12 January 2013

Don't miss the next Music in the Vines where a number of local and visiting musicians will be performing amongst the vines. Enjoy a day of total relaxation while Islanders catch up with each other and visitors feel right at home. So come along and join us, try a glass of Unavale wine and sample the local produce.

unavale.com.au

KING ISLAND

The Long Table Festival

22 - 24 March 2013

King Island is famous for its cheese and beef; we also have amazing seafood and locally grown fruit and vegetables as well as abundant game foods. An extremely popular event for food lovers of beef, game meats, cheese, seafood and local fruit and vegetables.

Everything is gathered and you get to meet with the growers and then help along with the chefs, before enjoying a long, lazy lunch. Many activities are included in a rare opportunity to see 'behind the scenes' of life on King Island. Definitely worth the trip.

For more information contact Cynthia Daniel at cyn.daniel63@gmail.com or phone (03) 6462 1662



To see a full list of events on at each Sharp Destination visit – sharppairlines.com.au

If you would like to include your event email community@sharppairlines.com.au

HAMILTON



Mount Rouse

Twenty minutes east of Hamilton, lies the town of Peshurst, home to the extinct volcano Mount Rouse, accessible by vehicle. To the south of the main scoria cone is a deep circular crater with a small lake and shallow crater rimmed with basalt. Past lava flows from Mount Rouse followed shallow, gently sloping river courses, extending at least 60 kilometers south. A thin basalt lava flow contained in the scoria cone has been dated at approximately 1.8 million years old. The Mount Rouse summit provides panoramic views of the lava plain and surrounding district.

visitsouthernrampians.com.au

Deep Bite
CAFE • RESTAURANT • STORE
Flinders Island
TASMANIA

Restaurant dining with spectacular view of Mt Killiecrankie

527 Killiecrankie Rd, Killiecrankie, Flinders Island • (03) 6359 8499
Email: deepbitecafe@gmail.com • Night Dining Bookings preferred

The Sharp Files

DID YOU KNOW...

1. Adelaide is home to Australia's first modern multi-venue performing arts centre, opening in 1991 and playing host to test netball matches, concerts and even wrestling.
2. Hellyers Road Distillery in Burnie, Tasmania is Australia's largest single malt whiskey distillery.
3. The Killiecrankie diamonds can be found on Flinders Island. They are not a true diamond but are rather a hard form of topaz and were one of the earliest gems or minerals recorded and exported from Australia. These 'diamonds' can be fossicked for along the beaches and gullies on the Island.
4. Hamilton claims to be the "Wool Capital of the World" based on its historical links to sheep grazing which continue today producing 15% of Australia's total wool clip.
5. King Island is not a small island. It is 58 kilometres long and 21 kilometres wide and has a total area of 126,000 ha.
6. Launceston is known for its extraordinarily beautiful 19th century buildings. It is thought Launceston has the greatest concentration of nineteenth century buildings of any city in Australia.
7. Melbourne hosted the 18th Commonwealth Games in March 2006 and it is the largest sporting event ever hosted in the city.
8. The Portland Cable Tram provides people with a scenic and informative journey along the foreshore, with views along the coast and passing the Portland Powerhouse Car Museum, Maritime Discovery Centre and Whalers Bluff Lighthouse.
9. Port Augusta is home to the Australia Arid Lands Botanic Garden. The eremophila garden contains around 155 different varieties and is one of the largest collections of its kind. In 2006 more than 100,000 people visited the gardens.
10. Portland is the only deep water sea port between Melbourne and Adelaide, making it a major centre for sea transport of goods and services from the surrounding areas .

JOIN NOW ...

It takes 2 minutes online and doesn't cost a cent. You will receive your membership number and password immediately by email

» Your SharpFlyer card will be sent to you within 30 days

Visit sharppairlines.com.au to join.

Would you like to be a SharpFlyer?

To join give the completed form to friendly a Sharp Airlines staff member or complete the form at SharpFlyer.com.au

Your Details

Please circle
Mr Mrs Ms Miss Dr other

First Name

Last Name

Date of Birth / /

Email

Telephone

Mailing Address for your SharpFlyer card

Street

Town/Suburb

State Postcode



I agree to SharpFlyer terms & conditions.

To view the terms and conditions or find out more information visit SharpFlyer.com.au

Sharp Airlines Pilot Training Renowned for Quality

Cadet Dushyant Mehrotra tells us about his experience training with Sharp Airlines.

I was constantly coming across friends and colleagues of current and former Sharp cadets and the one word I heard from every single one of them was "quality". Having spent a good two months at Sharp now, I have seen exactly that. The quality of flying training here is second to none and stems right from the top.

Every instructor at Sharp Airlines is highly experienced, and absolutely passionate about instructing and seeing you succeed.

On top of this high level of training, cadets are also given the opportunity to be a First Officer on the Fairchild Metroliner for 12 months, giving you the experience to fly for other Metro and charter operators around Australia after the 12 months.

If quality is what you are after and if you are prepared to work hard, Sharp will help you get your first job and, more importantly, give you the experience of being a reliable First Officer!

I would recommend Sharp Airlines to every single aspiring pilot out there. There are only a few flying schools around with instructors that have 20 or more years of flying experience but still have the passion to come into a classroom and deliver a quality brief whilst using their many years of flying and instructional experience.



The biggest difference between Sharp Airlines' flying school and any other flying school is that Sharp Airlines is training you to be a commercial pilot and a First Officer from day one. The aim is not to just train commercial pilots and leave them to develop their own skills to meet airline requirements. Sharp aims to develop a pilot with the required multi-crew and decision making skills expected of an airline First Officer and future Captain.

Safety is paramount in the aviation industry and one of Sharp Airlines major focuses in the recent years has been on developing an effective safety management system. I see it as one of the focal points of the culture at Sharp Airlines and it is drilled into us right from the start.



Sharp Contacts

T: 1300 55 66 94

F: 03 5574 8258

E: reservations@sharpairlines.com.au

W: sharpairlines.com.au

Head Office

Hamilton Airport

Hensley Park Rd

Hamilton VIC 3300

Media & Marketing

Organised Success

T: 1300 30 48 03

E: marketing@sharpairlines.com.au

SHARP AIRLINES OFFICE HOURS

RESERVATIONS & ENQUIRIES 1300 55 66 94

Monday to Friday - 8am to 6pm EST

Saturday - Closed

Sunday - 1pm to 6pm EST

Public Holidays - 10am to 5pm EST

CLOSED - Good Friday and Christmas Day



AN ISLAND FIT FOR A KING WITH SO MUCH TO DISCOVER & DO

King Island is an environmental jewel located one hour by plane from Victoria and Tasmania. Generally, summer's average temperature is 23 degrees and approximately 9 degrees minimum in the winter.

CAPE WICKHAM LIGHTHOUSE
TOURISM TASMANIA & BETH VELLEKOOP

CURRIE

TOURISM TASMANIA & PETER BELLINGHAM

The island was named after Phillip King, a former Governor of New South Wales and currently has a population of just 1,600 people. And with the Island measuring approximately 65km long by 30 kilometres wide, it allows plenty of room and privacy for all residents, whether they be permanent or temporary.

To check out what King Island has to offer you can book an organised bus tour or create your own experience either by hiring a car, bike or on foot. It is recommended that you purchase a topographic map to ensure you do not miss out on any of the sites. Below is just a snapshot of the range of experiences available on the island.

BEACHES, LAGOONS

King Island is bursting with beautiful beaches and charming coastline. Some access is through private land, so make sure to leave all gates as you find them. While having fun at beaches and lagoons, it's important to remember there are no lifesavers on the island, so while the seclusion creates a wonderful sense of adventure, make sure to check with locals over the dangers of certain beaches. One of the most enticing things about a visit to King Island in summer is the clear water, the pristine waves and the crowds... bring your own and throw a party if you get lonely.

FISHING

Sweep is the favoured catch off the rocky western shores while sandy beaches such as Phoques Bay and Martha Lavinia are good surf fishing spots and the catches range from Australian salmon, gummy, school shark and mullet. If you fancy yourself a fisherman, licences are available at Service Tasmania, George Street, and Currie. Graball net and mullet net licenses are also available.

DIVING

On King Island there is over 200km of coast and more than 100 known shipwrecks. And there are more than visual treats under the waves, rock lobster and abalone can also be caught, just remember recreational licenses are required and can be obtained at Service Tasmania.

SURFING

Being an island the wind is off shore somewhere every day. Before you arrive check out the 7 day forecast on bouyweather.com.

The most popular surfing spots include:

Martha Lavinia, is off shore on a south westerly. This surf break has been voted by Surfing Life as one of the top 10 waves in the world, close to a regional city and has been in more magazines than Pamela Anderson!

British Admiral Beach, this is Currie's closest surfing beach; it is a long, sweeping beach with good surfing at the southern end.

KELP

Bull kelp has washed ashore on King Island since the dawn of time and it is among the richest of alginates in the world. Visitors can observe kelp operations at the kelp factory from the roadway, but must not walk amongst the racks of kelp as they weigh hundreds of kilos and from time to time fall without warning. Feel free to ask a kelper for information on how and what they do, most will welcome your enquiry as you discover them working along the coastline.

MARTHA LAVINIA & PENNY'S LAGOONS

These are wonderful fresh water lagoons. Penny's Lagoon has a sandy bottom and is safe for children, but supervision is always a must.

There are maintained BBQ facilities and toilets at this site. It is a great area and a trip here would suit people of all ages looking for a relaxing and fun time out in the sun.

BIRD OBSERVING

King Island is a bird lovers' paradise with over 78 species to watch out for. These range from little penguins and shearwaters (muttonbirds) to turkeys, peacocks and many small native birds such as superb blue wrens. Sea Elephant River is the island's only tidal river and is a haven for water birds.

PENGUINS

Little penguins are among the smallest of species with the adults standing about 40cm and weighing just 1kg. Penguins are territorial, they feed at sea by day diving up to 10 to 30 metres for small fish before returning to their homes after dark. Families with young children will especially enjoy seeing the penguins. If you haven't had the pleasure of viewing penguins in their natural habitat, then this is not to be missed.

CURRIE HARBOUR

TOURISM TASMANIA AND DENNIS HARDING





CALCIFIED FOREST
TOURISM TASMANIA &
SOUTHERN CROSS TELEVISION



KING ISLAND
TOURISM TASMANIA &
SOUTHERN CROSS TELEVISION

BUSHWALKING

You can walk through Lavinia State Reserve and Pegarah State Forest. Not only will you get to observe and enjoy some of the most beautiful scenery in the world on a pristine island, you will also get plenty of exercise along the way.

PLATYPUS

'Puddle with the Platypus' is a guided tour for the adventurous at heart. Seeing this interesting species in its natural surroundings cannot be missed if you love animals.

CURRIE LIGHTHOUSE TOURS

Climb the 20 metre high spiral staircase and learn about the lighthouse's history and early shipwrecks of King Island. The lighthouse offers spectacular views around the island and is an amazing experience for those who love history and the beauty of the island.

CALCIFIED FOREST

These spectacular remains are up to 7000 years old and are all that remain of an ancient forest. The forest was revealed when the lime-laden sand, which had covered and preserved the stumps, was exposed over the years from the constant storms from the Southern Ocean.

SEAL ROCKS

Has a magnificent ocean outlook across the breathtaking cliffs. Alas, there are no seals here anymore as the sealers wiped them out in the early 19th century, but there are colonies of little penguins and shearwaters (mutton birds) and a diverse range of bird and animal life can be seen as you drive to the rocks. Walking tracks also traverse the length of the Seal Rocks area.

KING ISLAND ALPACAS

Visitors can get up close with alpacas. There is a growing herd of Huacaya Alpacas and visitors are welcome to wander amongst these inquisitive creatures.

WIND FARM

Tasmania's first major commercial wind farm is King Island's Huxley Hill. The site was selected because of its exposure to the existing diesel power station and strong winds. The average wind speed in the area is 33 kilometres per hour, providing excellent conditions for wind generation.

GOLF

Currie has a 9-hole links course overlooking the sea. To test your golfing skills, hit across the bay to the fourth green, although you may join the many who have failed the challenge. The club also offers a competition standard bowling green and squash courts and extends a warm welcome to visitors.

SAILING

The King Island Boat Club meets at its Grassy Port headquarters twice monthly. Grassy Port hosts many visiting cruising and racing yachts.

HORSE EVENTS

King Island has a strong horse racing calendar with approximately 6 race meetings each summer and there is also a pony club. Horse rides along pristine beaches and coastal trails are available for all ages and are a unique way of travelling the coastline.

HUNTING

In a nod to its European heritage, King Island has a pheasant season which occurs over the Queen's Birthday long weekend in June. Licences to shoot pheasant can only be obtained through Service Tasmania or by contacting King Island Game Bird

***For further information, contact King Island Tourism Inc on 1800 645 014.



KING ISLAND
TOURISM TASMANIA & SOUTHERN
CROSS TELEVISION

WILD FLOWERS, RUGGED MOUNTAINS & CREATURE COMFORTS



While the Southern Grampians Region has many attractions to entertain people of all ages throughout the year, it is spring and summer when this region truly comes to life.

The scenery is breathtaking, with the Grampians National Park a highlight when wildflowers in a range of shapes and colours come out in bloom.

The Grampians National Park offers rugged mountain landscapes spanning the 168,000 hectare national park. For adventure seekers to people looking for a relaxing getaway, the Grampians has something for everyone. With over 52 walking and hiking tracks in the area

for varying levels of fitness, some of which lead to stunning waterfalls, is a great way to get some exercise and snap a few pictures of this beautiful part of Australia.

But if your idea of a perfect spring day is less active and maybe includes sampling fine wines, strolling through a vineyard and matching a good drop with a delicious meal, the Southern Grampians won't disappoint.



GOURMET PRODUCE

The Southern Grampians area offers many food and wine destinations to visit and purchase delicacies that are fresh and local. Because of the fertile soils of the region, there is the opportunity for a diverse range of produce to be grown. From honey, sheep yoghurt to traditional handmade, local quality chocolates and luxurious lavender products, there are plenty of local souvenirs to be enjoyed.

Bochara Winery is located just 10 minutes west of Hamilton and offers an assortment of specialty wines at reasonable prices. The winery is set on attractive grounds and tastings for individuals or groups occur at the historic cellar door which is a picturesque cottage transferred to the grounds in the 1920s. The cellar door has been producing premium wines since 1999 and is best known for its Sauvignon Blanc, Picnic Train Rose, Pinot Noir and the sparkling wine "Arcadia".

For the sweet tooth, Glenelg Chocolates is a store that handcrafts its own chocolates. It is located 20 minutes west of Hamilton at Coleraine. There is a wide assortment of delicious locally made German chocolates, truffles and creams that also make perfect gifts.



Gourmet Food, Gifts & Wine Merchants



New

DAILY DELIVERY



AN AWARD WINNING EXPERIENCE



The perfect gift idea for Christmas!

Direct from Melbourne to Hamilton via Sharp Airlines Freight service.



DARRIWILL FARM CAFE RESTAURANT
 A must for all food and wine enthusiasts.
 Open for lunch or dinner.
 We also specialise in corporate and wedding catering for 10-400 people at various venues.

GOURMET GIFT HAMPERS
 To suit everyone's tastes, our hampers contain the finest gourmet provisions sourced from around the world. Just select one of our pre-made hampers or design your own, making it the ideal corporate or private gift for any occasion.

Darriwill Farm - 169 Gray Street, Hamilton T: (03) 5571 2088 E: hamilton@darriwillfarm.com.au



RETAIL THERAPY

For some retail therapy to give your other senses a treat, there are three antique businesses in the southern Grampians area, in Hamilton, Dunkeld and Peshurst. Alstin's Antiques in Hamilton provides antiques that are rare, exquisite and sure to be the centrepiece of any room in your house. This business is established as one of the finest antiques dealerships in Western Victoria. Its owners have been dealing in antiques for over 50 years and are sure to be able to help you find the perfect piece to make your home even more special. With 160 years of rich pastoral culture, antiques from this area often come with vibrant and interesting stories of their own, that rival the magic of the mountains the region is named after.

COUNTRY RACING IN STYLE

The biggest event in the Southern Grampians social calendar is the Royal Mail Hotel William Thomson Dunkeld Cup. So if you're in the Southern Grampians area during mid-November then make sure you head along to this fantastic day of racing, entertainment and socialising, which is occurring on Saturday, November 17, 2012. The race meet attracts people from all around the state and the day serves up many treats in the way of first class womens' and mens' fashions on the field, delicious local food and wine, and exciting racing all with the spectacular view of Mt Abrupt as the backdrop to the racecourse.

For more information visit www.visitsoutherngrampians.com.au

WIN a Package for 4 to Dunkeld Races*



Sharp Airlines and Darriwill Farm have joined forces to provide a Race Day Package for 4 people to enjoy a day at the magnificent Dunkeld Races on Saturday 17 November.

The package includes flights and transfers to the Royal Mail Hotel William Thomson Dunkeld Cup, race entry and a fully catered package of beautiful food and wine.

TO ENTER

simply send an email to: marketing@sharpairlines.com.au with the subject - DUNKELD

In the body of the email include your SharpFlyer number, name and telephone number.

→ Entries close Tuesday 6 November 2012 at 5pm. Winners will be notified by Wednesday 7 November 2012.

→ If you are not a SharpFlyer, you can still enter - become a SharpFlyer today and send in your entry!

*Conditions Apply



Hamilton Travellers deserve 4 star comfort

- Corporate Rates Available
- Close to CBD
- Complimentary Astar and *Wifi
- Room Service Breakfast and evening meals available
- Chargeback arrangements with the best Hamilton Restaurants
- Accommodation options - Deluxe Spa Room, Deluxe Queen Rooms, Townhouse Suite (3 br / 2 bathroom)

Hamilton Townhouse Motel 4 star and green star accredited.

Hamilton
TOWNHOUSE MOTEL

Ph: (03) 5571 2517
www.hamiltontownhouse.com.au

Ten Days on the Island



Ten Days on the Island, Tasmania's international arts festival, will blast across the state from the 15 – 24 March 2013.

As islanders, Tasmanians have their own identity which sets them apart and Ten Days is Tasmania's celebration of what makes them and their communities unique. The seventh biennial festival will bring to Tasmania a celebration of global island cultures and the programme will include multi-artform events from Tasmania, mainland Australia and islands around the world.

The 2013 festival will be the first Ten Days festival to be curated by Artistic Director Jo Duffy. "I am delighted to be working with one of the world's most unique cultural events. I am increasingly discovering that the diversity of the spectacular Tasmanian landscape is matched by the breadth and depth of the arts right across the state. I'm looking forward to introducing a range of impressive national and international artists to our local and visiting audiences." The festival will be presented throughout Tasmania in spectacular locations

such as Flinders Island and King Island to ensure these Tasmanian communities and visitors to the state have the opportunity to experience the state's largest arts and cultural festival in amazing locations.

"By bringing high quality and diverse performances to the islands, such as the internationally renowned Dougie MacLean, Ten Days is a key player in the growth of the creative sector in the Flinders community and offers another great reason to visit" Raoul Harper, General Manager of the Flinders Island Council.

Ten Days is working with local businesses to offer fun, festive and valuable experiences for communities and visitors as part of the festival. There will be a selection of free events, family shows, ticketed performances and opportunities for each Festival location to host their own international arts festival.

Ten Days is just one reason to visit King Island in March 2013. If you are feeling energetic the island will be hosting Imperial 20 a running or walking race which takes participants through some of the most stunning areas of the island. More information:

www.kingislandrace.org.au

The annual The Long Table Festival is also held over this time and the event features the island's delicious produce from the land and sea. More information:

kingisland.net.au/ki-special-events

Ten Days on the Island

Tasmania's International Arts Festival

15 – 24 March 2013



Dougie MacLean

Origin: Scotland

Artist: Dougie MacLean

Genre: Folk music

23 March 2013

Dougie MacLean's self-composed songs with roots in the Scottish Highlands, are exquisitely human and perceptive and performed with extraordinary compassion and ease. Celebrated as "a musical hero" by the Wall Street Journal, this legendary singer-storyteller and multi-instrumentalist will share wonderful tales through his evocative folk music. The festival is very excited about taking festival events to the islands and invites Sharp Airline travellers to come and enjoy Ten Days 2013. For more information about festival events check the website:

tendaysontheisland.org



Flinders Island's Partridge Farm

A Unique Accommodation Experience...

Four star accommodation with free range partridge, guinea pigs, Cape Barren geese, Rastus the alpaca, deer and dorper sheep, a large orchard, olive trees and vineyard.

Private modern units all with panoramic views of Franklin Sound

Each unit has a large wine and beer supply and meals prepared by Lorraine can be delivered to your unit, plus Rav4 4wd for hire

** Venue of SBS Gourmet Farmer long table lunch*



To find out more call Lorraine & Rob Holloway on 03 63593554

BURNIE

a diverse mix of culture, industry and nature



LION CHEESE FACTORY (FORMERLY LACTOS)
TOURISM TASMANIA & BURNIE CITY COUNCIL

Once a rugged town surrounded by dense rainforest, Burnie is now a city with a vibrant shopping culture and huge range of successful industries.

First explored by Bass and Flinders in 1827, Burnie is Tasmania's most westerly city, an hour and a half from major tourist attractions Cradle Mountain and Stanley and situated on the shores of Emu Bay, the city has a lot to offer visitors.

The city is visually appealing with extensive parks and gardens throughout which are popular with locals and visitors for their natural beauty that is on display year round. There are also some perfect art deco and federation homes throughout the town adding to the beauty on show.

Burnie's appeal is its mix of modern industries alongside natural beauty. It is Tasmania's fourth largest city and is home to one of Australia's

largest ports, but in the same city visitors are encouraged to stay the night and see the evening penguin parade as they loudly feed their babies. Just outside of Burnie, people also have the chance to see platypi living in the Fern Glade Reserve, a peaceful river valley where platypi live. The platypi are most likely to be seen in the early morning or around sunset.

Burnie locals are well known for being industrious, especially with their hands. A large paper and pulp mill operated on the city's outskirts from 1938 to 1998 and at the Burnie Regional Art Gallery, many of the works shown focus on paper to reflect the importance of paper making to the people of Burnie. A major exhibition at the gallery is entitled 'Federation Street' and it gives people the opportunity to see how locals lived 100 years ago. Visitors can discover the lives of forebears through rooms that are stores showcasing memorabilia and personal assets. Each store in the exhibition shows a different profession that is important to the pioneering community in Burnie.



BURNIE
TOURISM TASMANIA AND
GEORGE APOSTOLIDIS

MEET THE MAKERS OF BURNIE TASMANIA
TOURISM TASMANIA & RICK EAVESGEORGE APOSTOLIDIS



BURNIE

In the 1990s a boutique paper business, Creative Paper, began which created high quality paper to be used for cards, journals and beautiful folios. The paper is created by hand using traditional methods and local fibres are used as ingredients.

Burnie also has a cheese making industry with a rich past. It was founded in 1955 by Milos Vyhnaek, a Czechoslovakian who wanted to make cheese in Australia to the standard of the great cheese makers of Europe. Milk is sourced from about 100 dairy farms within a 120 kilometre radius of Burnie. It is now owned by Lion Nathan Foods and much loved brands including Australian Gold and Tasmanian Heritage are produced there.

Visitors to Burnie also have the incredible opportunity to witness the distillery process first hand with an interpretative behind the scenes tour at Hellyers Road Distillery - tasting is highly recommended.

So with the diverse city of 21,000 people only a 40 minute drive from Devonport and 3 hour and 40 minutes from Hobart and many accommodation options available, including apartments, holiday units, bed and breakfasts, guest houses, caravans, hostels, hotels and motels, Burnie is well worth a visit.



BURNIE SURF CLUB
TOURISM TASMANIA & DAN FELLOW



BOUTIQUE



Boutique Handkerchiefs for
women, men & children

Featuring a range of vintage and new fabrics

Visit our e-boutique store at boutiqueh.com.au



Upwelling

FESTIVAL 2012



The Portland community will celebrate the Bonney Upwelling this month with a festival dedicated to the epic natural occurrence.

On Saturday, November 3, Portland's Upwelling Festival 2012 is returning for the fourth year to offer a fantastic and vibrant way for the community and visitors to celebrate the unique features of their beautiful coastal town.

The Upwelling Festival celebrates all that is unique about Portland and its community and showcases an important environmental phenomena – the Bonney Upwelling.

The Bonney Upwelling is the epic natural ocean occurrence that powers a seven month (November to May) feeding frenzy of tuna,

crayfish, giant crabs, squid, fish, seabirds, seals, krill and blue whales. Supporting an incredibly rich ecological food web, the Upwelling is at its greatest off the coast of Portland and is the cornerstone of their lucrative local fishing and tourism industry.

The Upwelling Festival runs for just one day and is a free event, so if you are in the area on November 3, it is not to be missed.

This year's festival includes community arts projects, entertainment, local produce and children's activities.

The festival received Festivals Australia funding for a major community art project this year. The installation 'Phloating Phyto' is a series of large sculptures floating on the harbour which will celebrate Phytoplankton, the microscopic plant life which are the base of the Upwelling food chain.

PROGRAM OF EVENTS

7.30am	BLESSING OF THE FLEET 7.30am - Free Breakfast by Rotary Club of Portland Bay 8.30am - Blessing ceremony
9.15am	WHARF 'N' TALK - Ask the boat owner about their boats
9.00am to 5.00pm	MARKETS
10.00am to 5.00pm	ENTERTAINMENT
11.00am to 3.00pm	SW Tafe – Kids activities & Pacific Hydro Family Marquee
11.00am	STREET PARADE
12noon to 4.00pm	Whale Boat Races
12noon to 4.00pm	Port of Portland Tours
1pm to 4.00pm	MARINE ENVIRONMENT TALKS
4.30pm	Duck Derby
All day	ART PROJECTS Phloating Phyto Pen a Pod of Whales Window Art

For more information go to the website
www.upwellingfestival.com.au



Upwelling Festival PORTLAND

featuring **Phloating Phyto Project**

Australian Government
 Festivals Australia

www.upwellingfestival.com.au

Upwelling Festival

Presented by Rotary Club of Portland Bay Inc.

A community celebration of the Bonney Upwelling

SATURDAY 3RD NOVEMBER 2012

PORTLAND FORESHORE

7:30AM - 5:00PM

Blessing of the Fleet (free breakfast)
 Wharf 'n' Talk
 Markets
 Street Parade
 Kids Activities
 Art Projects
 Entertainment
 Whale Boat Races
 Port Tours
 Marine Environment Talks





Lamb for Christmas anyone?

Combine the beautiful lavender produced near Hamilton with some Southern Grampians spring lamb and you get a succulent dish bursting with intricate flavour for a perfect summer roast. Lavender might seem an odd partner for meat, but the resinous fragrance has much in common with rosemary, which is famously good with lamb. Use unsprayed flowers from the garden or culinary-quality dried lavender. All you need to serve with the lamb is some new potatoes and fresh young beans.

Ingredients

- » One leg of spring lamb weighing about 1kg/900g
- » Olive oil
- » 1 tsp of lavender flowers or fresh rosemary
- » 75 ml white wine
- » 8 tbsps cr me fraiche

Method

- » Preheat the oven to 180C. Rub the lamb with olive oil.
- » Put the lamb in a roasting pan and pour in enough water to come to a depth of about 1cm. Sprinkle a pinch or two of lavender over the lamb and the water.
- » Bake for about 50 minutes to one hour for a rare finish to the meat.
- » Take the lamb out of the pan and put on a serving dish.
- » Pour the juice from the roasting pan into a saucepan and add the wine. Spoon off the excess fat. Add the lavender to the remaining liquid and heat until it boils. Stirring all the time, reduce down to about half a cupful.
- » Stir in the cr me fraiche and stir well until amalgamated. Add any juices that have gathered under the lamb on the serving dish.
- » Carve the lamb and spoon over a little sauce, serve with steamed beans and new potatoes.

The Furneaux Tavern

Flinders Island Tasmania



Situated on the waterfront the Furneaux Tavern is a favourite meeting place for locals and visitors and has one of Flinders Island's best views from the bar.

The Furneaux Tavern offers comfortable accommodation with 12 motel style units set amongst an acre of native gardens and magnificent water views.

The Tavern offers bistro dining in the Shearwater Restaurant, which serves local produce 7 days a week all year round.

Phone: 03 6359 3521

furneauxtavern.com.au



A Handkerchief for Christmas?

Whether you want to say Merry Christmas, thank you or I love you; **Boutique Heidi** has the perfect gift!

With Christmas fast approaching, we know that sometimes friends and family can be very picky when it comes to gifts. So this year, Boutique Heidi has done all of the hard work for you, and have a range of Handkerchiefs that are sure to suit all ages and tastes!

With a gift to suit every price range, Boutique Heidi's handkerchiefs have got you covered this Christmas! With Christmas themed hankies and hankies made from Liberty, Vintage and Australian fabrics we have almost 100 designs to choose from.

Boutique Heidi's Christmas Handkerchiefs start at \$11 each for Children, \$12.50 and \$13.50 for women and \$14.50 for men. All beautifully packaged - perfect for mailing to a loved one, especially one who has everything! For \$33 you can purchase the Hankie bundle of 3 hankies, packed and tied with a bow ready to give.

For an additional \$7 we have a Gift Service where we will provide a card, hand write a message and provide gift wrapping. All you need to do is select the gift.... but we can always do this for you too!

See our range at:
www.boutiqueheidi.com

BOUTIQUE



.com

Is your business looking to reach a greater audience?



Market Potentials

Target	
People 18-39	33,700
People 25-54	52,700
Grocery Buyers	57,500
Total People	136,600

Then use the "Power of Television". Southern Cross Media is Australia's largest regional Multi Media Company. Reach more Australians and put your Business Top of Mind. To find out how we can help your Business grow give us a call.



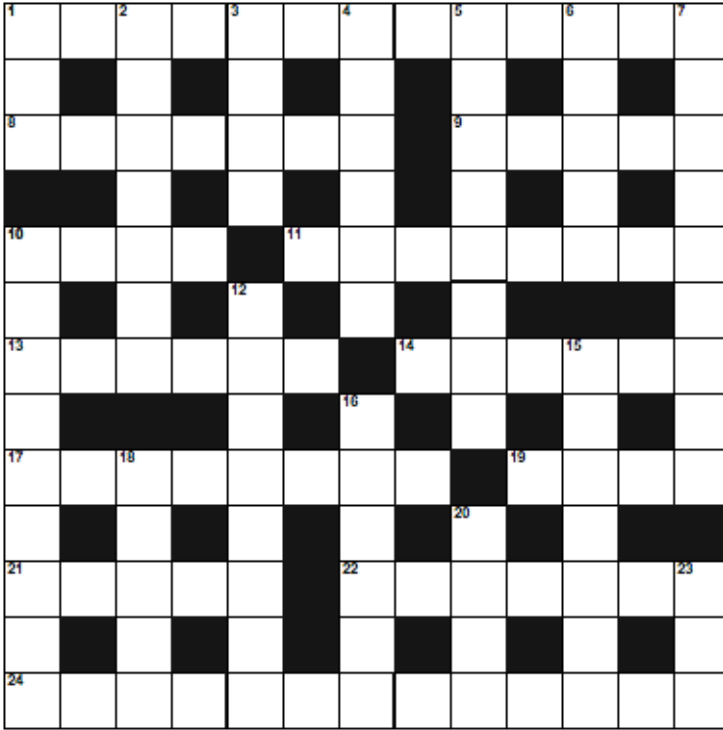
Ph: 08 8638 3400



Sharp Minds

Sharpen your brain with these tricky little quizzes!

CROSSWORD



ACROSS

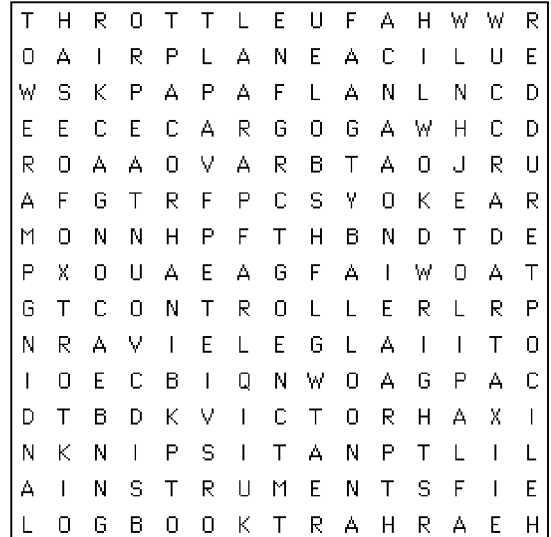
- 1 Having double security (4,3,6)
- 8 Retreat (4,3)
- 9 Elvis (anag) — is not dead (5)
- 10 Cigarette end (4)
- 11 French policeman (8)
- 13 Heavy staff used as a weapon (6)
- 14 Fretted (6)
- 17 Profligate (8)
- 19 Sound of cat (or engine) (4)
- 21 Cosmetic powder (5)
- 22 Sound of walking through mud (7)
- 24 Give a written promise to abstain from alcohol (4,3,6)

DOWN

- 1 Protective clothing — fish (3)
- 2 Cold tea (anag) (7)
- 3 In a frenzy (4)
- 4 Be at variance (with) (6)
- 5 Excluded (5,3)
- 6 Sit on — suffice for (5)
- 7 Strap to hold up a stocking (9)
- 10 Regressively (9)
- 12 Respectful (8)
- 15 Poverty-stricken — filthy (7)
- 16 Be engaged in — hunt (6)
- 18 Nettled — ripped off (5)
- 20 Throw (4)
- 23 Garden tool (3)

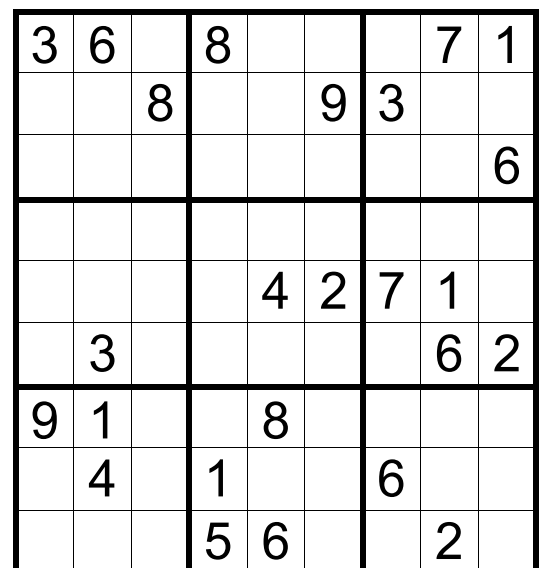
WORD FIND

TIME



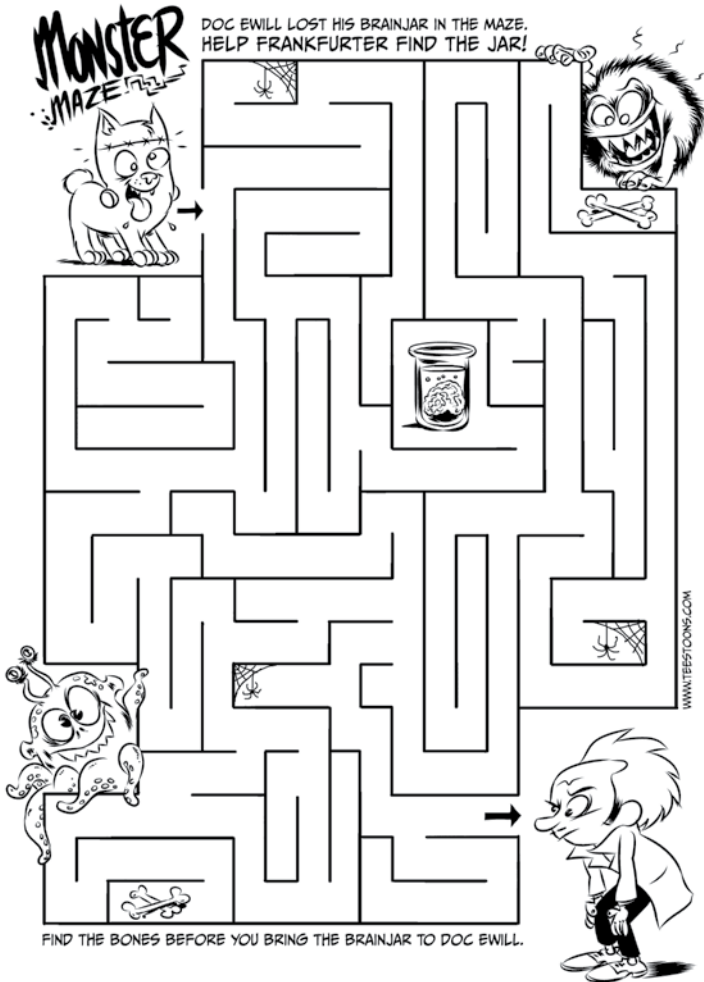
- | | | |
|------------|-------------|----------|
| AIRPLANE | GLIDER | RUNWAY |
| ALFA | HELICOPTER | SPIN |
| APPROACH | INSTRUMENTS | STALL |
| ATIS | JET | STATIC |
| BALLOON | KILO | TAKEOFF |
| BEACON | LANDING | TANGO |
| BRAVO | LINDENBERGH | TAXI |
| CARGO | LOGBOOK | THROTTLE |
| CONTROLLER | OSCAR | TOWER |
| EARHART | PAPA | VICTOR |
| ECHO | PILOT | WEATHER |
| FAA | POWER | WING |
| FLAP | RADAR | WRIGHTS |
| FOXTROT | RAMP | YOKE |
| FUEL | RUDDER | |

SUDOKU



Sharp Kids

MAZE



FIND - A - WORD

HARRY POTTER

o	v	h	o	j	p	o	t	t	e	r	y	x	q	l
f	d	d	a	n	r	s	p	e	l	s	r	x	y	
u	b	f	u	r	j	u	b	m	u	g	g	l	e	s
v	b	r	i	d	r	p	s	j	o	v	y	t	l	r
t	b	y	o	r	l	y	p	k	x	u	u	l	q	p
d	g	n	i	o	e	e	n	a	n	g	t	l	u	j
r	s	y	d	p	m	b	y	j	k	p	b	i	i	g
a	m	x	w	i	f	s	o	t	b	k	r	j	d	k
g	n	t	i	g	n	d	t	l	j	o	c	a	d	f
o	t	c	z	a	g	n	s	i	t	t	w	i	i	p
n	t	x	a	j	o	l	q	b	c	s	n	l	t	j
v	e	m	r	a	a	q	s	d	c	k	e	t	c	q
j	e	l	d	x	h	o	g	w	a	r	t	s	h	b
n	j	s	r	w	i	l	b	c	l	o	a	k	u	t
l	y	o	y	g	d	k	i	e	u	h	z	e	q	r

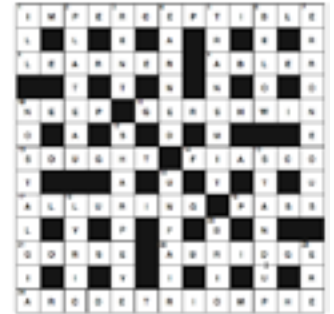
harry spells owl muggles potter dragon hogwarts broomstick cloak wizardry quidditch dudley firebolts

ANSWERS

SUDOKU

3	6	4	8	2	5	9	7	1
1	2	8	6	7	9	3	5	4
5	9	7	4	3	1	2	8	6
4	5	2	7	1	6	8	9	3
6	8	9	3	4	2	7	1	5
7	3	1	9	5	8	4	6	2
9	1	6	2	8	3	5	4	7
2	4	5	1	9	7	6	3	8
8	7	3	5	6	4	1	2	9

CROSSWORD



CHAPPELLS RESTAURANT FLINDERS ISLAND.
SIMPLY STUNNING CUISINE USING LOCAL,
ORGANIC & TASMANIAN PRODUCE EXCLUSIVELY.

PH: 03 6359 4586 THURSDAY TO SUNDAY



Melbourne Flight Schedules

From 27th September to 24th December 2012

Melbourne (Essendon) to Hamilton					
Essendon to Hamilton	Departure time	Arrival Time	Flight No.	Frequency	No. Stops
	0820	0910	SHARP822	MTWTF..	NON STOP
	1120	1210	SHARP834Sa.	NON STOP
	1445	1625	SHARP872:827	..W....	1 STOP PCD
	1650	1740	SHARP842Su	NON STOP
	1755	1845	SHARP828	M.W.F..	NON STOP
	1910	2000	SHARP828	.T.T...	NON STOP
Hamilton to Essendon	Departure time	Arrival Time	Flight No.	Frequency	No. Stops
	0705	0750	SHARP821	MTWTF..	NON STOP
	1005	1050	SHARP833Sa.	NON STOP
	0925	1100	SHARP822:871	..W....	1 STOP PCD
	1535	1620	SHARP841Su	NON STOP
	1640	1725	SHARP827	M.W.F..	NON STOP
	1755	1840	SHARP827	.T.T...	NON STOP

Melbourne (Essendon) to Portland					
Melbourne (Essendon) to Portland	Departure time	Arrival Time	Flight No.	Frequency	No. Stops
	0820	0945	SHARP822	MTWTF..	1 STOP HML
	1120	1245	SHARP834Sa.	1 STOP HML
	1445	1545	SHARP872	..W....	NON-STOP
	1650	1815	SHARP842Su	1 STOP HML
	1755	1920	SHARP828	M.W.F..	1 STOP HML
	1910	2035	SHARP828	.T.T...	1 STOP HML
Portland to Melbourne (Essendon)	Departure time	Arrival Time	Flight No.	Frequency	No. Stops
	0630	0750	SHARP821	MTWTF..	1 STOP HML
	0930	1050	SHARP833Sa.	1 STOP HML
	1005	1100	SHARP871	..W....	NON-STOP
	1500	1620	SHARP841Su	1 STOP HML
	1605	1725	SHARP827	M.W.F..	1 STOP HML
	1630	1720	SHARP873	..W....	NON - STOP
	1720	1840	SHARP827	.T.T...	1 STOP HML

Flinders Island Flight Schedules

From 27th September – 6th October 2012

Flinders - Launceston					
Flinders Island - Launceston	Departure time	Arrival Time	Flight No.	Frequency	No. Stops
	0855	0930	SHARP802	MTWTF.S.	NON-STOP
	1455	1530	SHARP806	M.W.F..	NON-STOP
	1655	1730	SHARP808	MTWTF..	NON-STOP
	1655	1730	SHARP814Su	NON-STOP
Launceston to Flinders Island	Departure time	Arrival Time	Flight No.	Frequency	No. Stops
	0800	0835	SHARP801	MTWTF.S.	NON-STOP
	1000	1035	SHARP803	M.W.F..	NON-STOP
	1600	1635	SHARP811Su	NON-STOP
	1600	1635	SHARP807	MTWTF..	NON-STOP

Flinders Island to Melbourne (Essendon)					
Flinders Island - Essendon	Departure time	Arrival Time	Flight No.	Frequency	No. Stops
	1055	1200	SHARP804	M.W.F..	NON-STOP
Essendon to Flinders Island	Departure time	Arrival Time	Flight No.	Frequency	No. Stops
	1330	1435	SHARP805	M.W.F..	NON-STOP

Adelaide Flight Schedules From 23rd April to 24th Dec 2012

Adelaide to Port Augusta					
	Departure time	Arrival Time	Flight No.	Frequency	No. Stops
Adelaide to Port Augusta	0645	0735	SHARP861	MTWTF	NON-STOP
	1500	1550	SHARP877Su	NON-STOP
	1715	1805	SHARP867	MTWTF	NON-STOP
Port Augusta to Adelaide	0750	0840	SHARP862	MTWTF	NON-STOP
	1605	1655	SHARP878Su	NON-STOP
	1820	1910	SHARP868	MTWTF	NON-STOP

Adelaide to Portland (+ = Eastern Standard Time)					
	Departure time	Arrival Time	Flight No.	Frequency	No. Stops
Adelaide to Portland	0910	1125+	SHARP833	M.....	1 STOP HML
	1320	1535	SHARP833	..W.F..	1 STOP HML
Portland to Adelaide	1155+	1235	SHARP832	M.....	NON-STOP
	1605+	1645	SHARP832	..W.F..	NON-STOP

Adelaide to Hamilton (+ = Eastern Standard Time)					
	Departure time	Arrival Time	Flight No.	Frequency	No. Stops
Adelaide to Hamilton	0910	1045+	SHARP833	M.....	NON-STOP
	1320	1455+	SHARP833	..W.F..	NON-STOP
Hamilton to Adelaide	1105+	1235	SHARP832	M.....	1 STOP POD
	1515+	1645	SHARP832	..W.F..	1 STOP POD

King Island Flight Schedules Effective 2nd July 2012

Burnie (Wynyard) – King Island – Burnie (Wynyard)					
	Departure time	Arrival Time	Flight No.	Frequency	No. Stops
Burnie – King Island	0755	0835	SHARP892	MTWTF..	NON-STOP
	1045	1125	SHARP896Sa.	NON-STOP
	1605	1645	SHARP894	MTWTF.S	NON-STOP
King Island - Burnie	0855	0935	SHARP893	MTWTF..	NON-STOP
	1145	1225	SHARP897Sa.	NON-STOP
	1705	1745	SHARP895	MTWTF.S	NON-STOP

Launceston – King Island - Launceston					
	Departure time	Arrival Time	Flight No.	Frequency	No. Stops
Launceston – King Island	0710	0835	SHARP892	MTWTF..	ONE STOP
	1000	1125	SHARP896Sa.	ONE STOP
	1520	1645	SHARP894	M.W.F.S	ONE STOP
King Island - Launceston	0855	1020	SHARP893	M.W.F..	ONE STOP
	1145	1310	SHARP897Sa.	ONE STOP
	1705	1830	SHARP895	MTWTF.S	ONE STOP

Note: Please refer to our website www.sharpairlines.com.au for flight availability on public holidays

Sharp Airlines. Where we fly.



Book your Sharp Connection today!

1300 55 66 94 | sharpairlines.com.au

To increase your bottom line...

...add

Pepper
brand managers.

pepperbrandmanagers.com

ANALYSE

CREATE

MANAGE

Sharp Airlines Office Hours

Sharp Airlines have new office hours

Monday to Friday - 8am to 6pm EST

Saturday - Closed

Sunday - 1pm to 6pm EST

Public Holidays - 10am to 5pm EST

CLOSED - Good Friday and Christmas Day

Please note these schedules are subject to change without notice please visit sharpairlines.com.au for the latest information.

Please refer to sharpairlines.com.au for flight availability on public holidays*

Phone: 1300 55 66 94



We're in it for the long haul

Adelaide Airport has its sights firmly set on the future. We've completed a new multi-level car park, we're building a new pedestrian plaza, and have plans to further expand our award-winning T1 terminal including better facilities for regional travellers.

Adelaide Airport continues to cater for more airlines flying from more destinations, both around Australia and overseas. You could have breakfast in Port Augusta or Portland, and be enjoying satays in Singapore or a Bintang in Bali by tea time.

To find out more - go to www.adelaideairport.com.au.



www.adelaideairport.com.au



Australian Capital City Airport of the Year 2011