

SUMMER

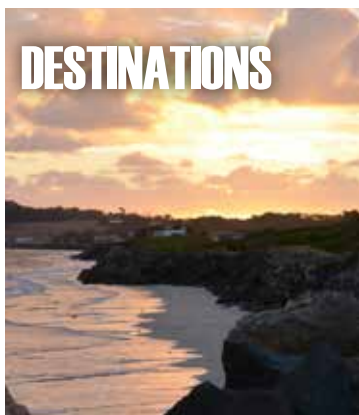
THE sharp TRAVELLER

SUMMER FUN AND
ISLAND FESTIVALS



ACTIVITIES

VISIT WERRIBEE ZOO



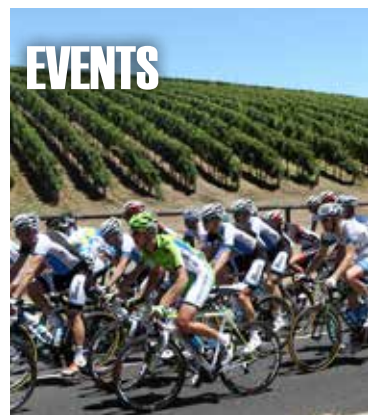
DESTINATIONS

THE END OF THE
ROAD



ACTIVITIES

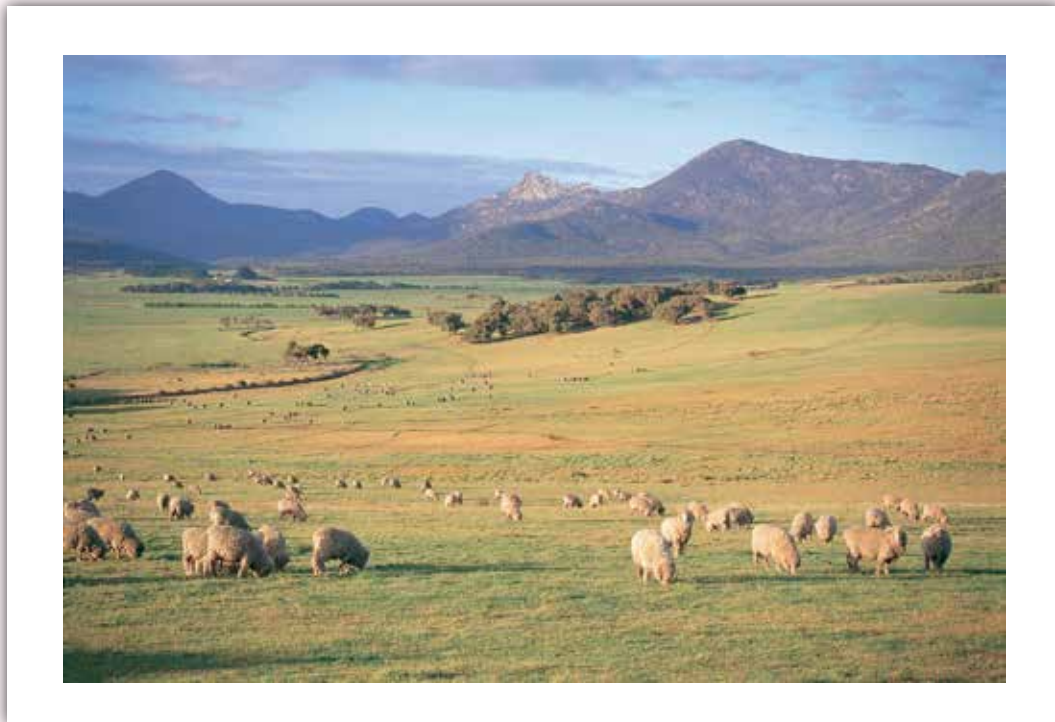
KING ISLAND
FESTIVAL



EVENTS

TOUR DOWNUNDER

TAKE HOME YOUR SLICE OF *Paradise....*



...as seen on **Masterchef** *The Professionals*



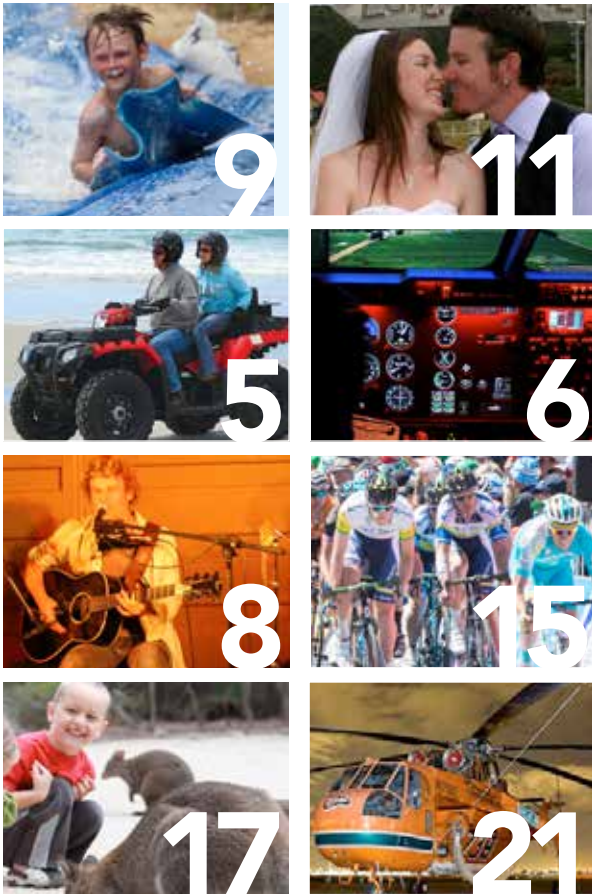
Flinders Island Meat is one of the most sought after brands by some of Australia's top chefs. The salty pastures, the ideal climate, and old style honest farming practices combine to produce a meat that is hard to beat.

You too can experience the Flinders Island difference at our butcher shop. And when you purchase one of our 5kg or 10kg Visitor Packs, we will cover the excess baggage costs to Launceston or Melbourne when you travel with Sharp Airlines.

Come in-store to find out more about taking home your own slice of *Paradise*

**FLINDERS
ISLAND**
Meat

Flinders Island Meat Butcher Shop, 3 Walker St, Whitemark, Flinders Island
Ph: (03) 6359 2005



What's On... 5

- › Flinders Island - School Holiday Program 5
- › Melbourne - Werribee Zoo 5
- › Port Augusta - Kids' Crabbing Day 5

Sharp Files 6

- › A Cadet Perspective. 6

King Island Festival 8

King Island 11

Classical style at Chatsworth House 13

Cycling Elite Tour Downunder 15

Flinders island. 16

Henty Bay, Portland 19

Business Profile 20

- › Essendon Airport 20

Sharp Minds 22

Sharp Kids 23

Flight Schedules 24

- › Melbourne (Essendon) 24
- › Adelaide 25
- › Flinders Island & Launceston 25
- › King Island 26

Where we fly 26

a fresh approach to your accounting services

- Personal Business Advice
- Improved Profitability
- Increased Cash Flow
- Succession Planning
- Business Valuations
- Start Up Advice
- Self Managed Super Funds
- Tax Planning
- Tax Returns





Welcome

Dear Sharp Travellers

Summer is a favourite time of year for many of us, with the promise of warm weather, holidays and time with family and friends.

It is also the perfect time to explore some of the wonderful destinations Sharp Airlines fly to, and perhaps spend some time getting to know a new part of this diverse land.

In this edition of Sharp Traveller, we have highlighted some unique experiences – island adventures and festivals, gourmet food, surfing and snorkelling are all on offer at our destinations.

Whether it is a shopping trip to DFO near Essendon Airport, watching the world's greatest cyclists at the Santos Tour Down Under, or catching crabs at Port Augusta, the range of

experiences available means there really is something for everyone.

As we wrap up another year, I would like to thank you all for choosing to fly with us. Providing safe and efficient travel for our customers is our goal, and we hope that we have delivered this for you – accompanied by a friendly smile.

Happy and safe travelling,



Malcolm Sharp

Director



Shhh we know a secret

www.sawyersbayshacks.com.au



sawyers bay shacks

Flinders Island, Tasmania

Enquiries: 0411 255 179

Located on the waterfront on Flinders Island are Sawyers Bay Shacks. Stylish and architect designed, these shacks front a beach recently nominated by The Age as Australia's top secret beach.



To see a full list of events at each Sharp Destination visit – sharppairlines.com.au

If you would like to include your event email: community@sharppairlines.com.au

FLINDERS ISLAND

Flinders Council Summer School Holiday Program

Flinders Council is once again delivering its annual Summer School Holiday Program. It's that time of year again to pull out the beach gear and join local surf coaches Andrew Cole (Coley) and Chris Macqueen (Macca) for lessons on some of the best surf beaches around the Island. This year snorkelling activities with local dive instructor Mike Nichols will also be on offer.

When: School Holidays

Contact: Community Development Department

Telephone: (03) 6359 5001

MELBOURNE

Werribee Open Range Zoo

Find your African beat this summer at Werribee Open Range Zoo

Set against the beautiful backdrop of Werribee Open Range Zoo, Rhythm of Africa returns this summer with a fantastic program of live music and free kids activities.

The summer concert series will run every Saturday night from 4 January to 22 February, bringing together a magic mix of warm summer nights, African beats, wild animal encounters and picnics on the grass.

Date: Saturdays, 4 January – 22 February

Time: 4.30pm – 8.30pm (Kid's activities from 4.30pm and live bands from 5.30pm)

Safari Tours: Safari Tours included in general admission – last bus leaves at 6pm

Location: Werribee Open Range Zoo, K Road, Werribee

Cost: Adults \$26.80 and Kids under 16 are free (includes general admission to the Zoo)

PORT AUGUSTA

Kids' Crabbing Day

Children are invited to bring their own crabbing gear and take part in this popular Port Augusta event, which has been running for nearly 10 years. Every child receives a prize.

Date: February 22, 2014

Time: 8am–11am

Location: Old Bridge, Port Augusta

Cost: Gold coin donation








FLINDERS ISLAND

QBT



BOOK NOW!

ph 0457 662 912

tours@flindersislandqbt.com.au

www.flindersislandqbt.com.au

THE ONLY PLACE IN TASMANIA
TO EXPERIENCE
QUAD BIKE TOURS ON THE BEACH!

Quote "SHARP" when booking -
passengers ride for half price

The Sharp Files

A Cadet Perspective

NEW ELITE SIMULATOR FOR SHARPCADET ELITE PILOT TRAINING

Sharp Airlines is at the forefront of pilot training in Australia. We pride ourselves on the quality of training we deliver to our cadets and the modern equipment on which they hone their skills.

SharpCadet is the longest-running cadet course in Australia with more than 23 years' successful pilot training. Around 85% of cadets find employment before or after cadetship completion and we have the lowest instructor-trainee ratios in Australia (1:5).

SharpCadet Bernard Schiffel is one of many to benefit from our most recent training acquisition - the Elite iGate S623 simulator.

The Elite iGate S623 simulator is the first of its kind in Australia to be fitted with dynamic control loading which provides feedback to

the pilot on many factors such as airspeed and altitude.

"The Elite iGate S623 allows us to easily switch between the Cessna 172, Piper Seneca and the King Air B200 simulations. Each configuration allows cadets in the commercial, instrument rating and multi-crew conversion stages to practice procedures in the relevant aircraft. The aircraft panels combined with the Lockheed Martin Prepar3D visuals enable a realistic simulation of scenarios encountered during flight," he said.

Bernard said cadets who have used the simulator found the graphics helped them to learn how to operate in and around controlled airspace.

"A simulation experience in the King Air B200

not only helps to introduce the multi-crew environment, but also familiarises operation of a high performance twin turbine aircraft prior to flying the Metroliner. A Garmin GNS430 is fitted to each aircraft, enhancing the realistic operation of aircraft systems. The software gives instructors control over every aspect, whether it be the weather conditions or the aircraft's state," he said.



PALANA RETREAT - your ultimate getaway

Modern two storey, two bedroom, two bathroom accommodation with spa, open fire etc... etc...

Free freshly cooked bread on arrival along with a bottle of sparkling wine.

Free internet access and extensive wine list.

Free use of kayaks.

We offer a pickup and delivery service from Killiecrankie Runway and Whitemark Airport.

Contact Judy Armstrong & Daryl Butler

Phone: (03) 6359 8566

Mobile: 0438 622 555

Email: daryl@palanaretreat.com.au

Web: www.palanaretreat.com.au

4756 Palana Rd, Flinders Island

Mention this advert when booking to receive an extra free bottle of wine



Sharp Contacts

T: 1300 55 66 94

F: 03 5574 8258

E: reservations@sharpairlines.com.au

W: sharpairlines.com.au

Head Office

Hamilton Airport

Hensley Park Rd

Hamilton VIC 3300

Media & Marketing

Organised Success

T: 1300 30 48 03

E: marketing@sharpairlines.com.au

DID YOU KNOW...

1. Sharp Airlines was founded in 1990.
2. Australia's favourite cyclist, Cadel Evans, will compete in the Santos Tour Down Under in Adelaide from January 19 – 26, 2014.
3. Essendon Airport became Australia's second, and Melbourne's first, international airport in February 1950.
4. Hamilton Botanic Gardens include a native animal enclosure and bird aviary.
5. The hottest December day in Port Augusta occurred on 21 December 1972 when a maximum of 45.1 degrees was recorded.
6. King Island is a rest stop for endangered Orange-bellied parrots on their annual migration from their breeding grounds in south-western Tasmania to their wintering grounds in mainland south-eastern Australia.
7. Portland's sister city is Zhangjiagang City in China.
8. Melbourne has the largest operating tram network in the world with 250 kilometres of double track and 1763 tram stops.
9. Flinders Island Council was established 26 February 1908.
10. Launceston was named in 1807 as the main settlement at Port Dalrymple.

SHARP AIRLINES OFFICE HOURS

RESERVATIONS & ENQUIRIES

1300 55 66 94


Monday to Friday - 8.30am to 5.30pm EST

Saturday & Sunday - Closed

CLOSED - Good Friday and Christmas Day

For easier, friendlier shopping, say Hello to your friends at
Essendon Fields Shopping Centre
 (adjacent to Essendon Airport Terminal)



Like us on
facebook 

[facebook/essendonfields](https://www.facebook.com/essendonfields)
 and stay in touch with specials

**ESSENDON
 FIELDS**

www.essendonfields.com.au
 9948 9400

ALL ABOARD FOR A REGAL FESTIVAL ON KING ISLAND



King Island is well known for its rugged coastline, shipwrecks and abundance of gourmet produce such as cheese, beef, crayfish and abalone. But did you know that each year it is also home to a 50 metre long water slide built amongst the scenic coastal hills?

The second Festival of King Island – or FOKI to the locals - will take place from 31 January

to 2 February 2014, and the water slide will be just one of the many attractions.

If you can imagine a beautiful natural amphitheatre with the sun setting on Currie Harbour as a backdrop, a laid-back atmosphere with plenty of room to move and a continual procession across stage of quality entertainment, then you can imagine FOKI. Add in some visiting and local musicians, a raft race, a pie-eating contest as well as some sumo wrestling and you have a festival experience you will remember for years to come.

A market of local crafts and foods from popcorn to jewellery will be held on site each afternoon of the festival weekend. The morning break gives visitors the opportunity to explore the island and enjoy the many wonderful local attractions.

You can start each day surfing, diving, fishing, horse trail riding, beach combing and bird spotting. You can also climb a lighthouse or tempt your taste buds with some cheese tasting or local produce.

Headline acts this year will be Kim Churchill and Benjalu. Kim has toured the world and released a fantastic acoustic and roots CD and videos which were shot on locations around King Island during his last visit. Cameron Oates a talented multi-instrumentalist from Skye, Victoria is returning after wowing the crowd last year.

A range of local talent will also be on display, with acts as diverse as troubadour singers, a covers duo, guitarists and a band playing original compositions all taking their turn on the stage.



KING ISLAND FESTIVAL



Up Close

- LOCATION:** Currie Club

- DATE AND TIME:** Friday 31st Jan – Festival warm up evening

- LOCATION:** Currie Harbour

- DATE AND TIME:** Saturday 1 and Sunday 2 February in the afternoon and evening

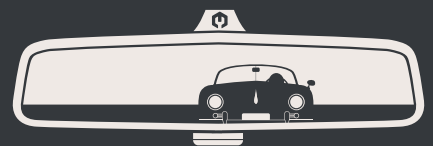
- COST:** Free entry

- MORE INFORMATION:**
www.facebook.com/FestivalOfKingIsland



Before the festival kicks-off on Saturday, visitors will also be able to indulge themselves with a visit to one the King Island racing club's meetings. This is where the "surf meets the turf" and believe me the locals love their horse racing and the Australian public love the charm and down to earth nature of the locals and the magnificent course. You get a real taste of country racing held by one of Australia's oldest racing clubs on one of Australia's oldest courses. The King Island Racing Club is now 117 years old, and boasts a dual code programme; with a mix of gallopers and pacers which both race on the one mile grass track.

If you love your horses and would like to take things at a slower pace, there is probably no better way to discover King Island than to take a horse ride with King Island Trail Rides. The friendly owners will take you on a voyage along the pristine and spectacular coastline. Rides range from 1 hour to 3 day camp out adventures. This is a great idea for quality time with well trained horses for all levels of riders. As you can see a long weekend on King Island for the festival will not only feature music, arts and crafts but also sightseeing, surfing, beach combing, horse riding, horse racing, free cheese tasting (at the venerable King Island Dairies) as well as just taking the chance to relax and unwind on this unpoilt gem in the Bass Strait.



EXCLUSIVE MENS T-SHIRTS. VIEW THE RANGE AT BOUTIQUEH.COM.AU





KING ISLAND

Naracoopa is a small coastal village only 20 kilometers from King Island Airport. Residents will tell you that it is variously known as the sunshine coast or the King Island Riviera and it's hard to disagree as your car first crests the hill into the village. The sight of this beautiful blue stretch of Bass Strait with Nine Mile Beach disappearing into the distance will stick fast in your mind's eye and is a memory that draws visitors back time and again.

Not a lot happens in Naracoopa and that's pretty much the point. Waves lap against the shore, birds pass across the wide horizon, local kids fossick for shells and if the wind is blowing in the right direction you might hear the zip of a fishing reel as squid, salmon, flathead or shark are pulled onto the 200m long jetty.

Joris and Maria Weitjens moved to King Island from Holland in 1963 to milk cows "up north". After almost a quarter of a century dedicated to raising their family and supplying famous King Island milk, they moved the short distance to Naracoopa where they purchased an 80 acre property known as Rocky Glen.

King Island's lush, green and flat pasture is about as far removed from an Alpine scene as you can imagine which is why it is something of a surprise to find Rocky Glen's architecture has a distinct Swiss chalet feel to it. It turns out that the property was built in the 1930's by a local man, Charlie Button,





and the growing Weitjens family added the gabled roofs and decorative weatherboard as they built on to the original property.

If you have no luck with the rod and reel then Joris and Maria's daughter, Heidi, serves take-away fish and chips for those wanting to languish on the beach and soak up the last rays on a Friday evening. More commonly though, visitors and locals alike prefer to dine at Rocky Glen's excellent restaurant where Heidi brings all her past experience as an events manager into play by making her guests feel welcome and relaxed while Dwayne, the Executive Chef, strives to prepare the best seasonal produce King Island has to offer.

These days Joris and Maria have handed over the front of house duties to Heidi as they concentrate on other passions which in Joris' case centres on encouraging his vegetables to grow in the large hot house behind the property. Joris is a firm believer in the efficacy of playing music to his vegetables but just to be sure he also has an armchair out there so he can keep an eye on their progress. The fruits of these labours enhance each dish

brought to the table be it fish from the sea, beef from the paddock or crayfish from the pot as Heidi introduces all her guests to the best King Island produce available at the time of their stay.

Once sated, diners can take a moonlit stroll along the nearby Lovers Lane or if they're not staying in one of Rocky Glen Retreat's charming chalets they can head back along the esplanade to one of the five other accommodation providers in this peaceful village. Baudins, named after the French explorer who nearly claimed the island for the French in 1802, has a bar and several cabins while towards the north end of the settlement, bird watchers love staying with local twitchers John and Rhonda at A Slice of Paradise.

It would be hard to describe the pace of life in King Island's main township of Currie as hectic but if you really want to get away from it all then Naracoopa operates at a decidedly different pace and the famously warm welcome from Heidi at Rocky Glen Retreat is certain to make you feel like you've come home.




Magnificent King Island Coastal Views

Imagine staying in the ideal location for your King Island holiday. Netherby Downs was designed to take advantage of the stunning coastal native vegetation and ocean view that is available from every window or glass door

Relax, Rejuvenate, Reconnect

Telephone: 03 6462 1938 | E: jimben53@hotmail.com | www.seaviewcottages.com.au





Classical style at Chatsworth House

The western district of Victoria is renowned for rolling green hills, meticulously landscaped heritage gardens and historic homesteads to rival the country houses of England.



Chatsworth House, overlooking the Hopkins River, is no exception. A bluestone mansion with ironwork verandahs and spacious landscaped gardens, it was built in 1858-59 for pioneer pastoralist John Moffat.

Chatsworth House is a fine example of the conservative classical style mansion and a notable work of James Henry Fox, a celebrated Hamilton based architect and designer of Victoria's most magnificent mansion 'Werribee Park' in 1873-78.

STUNNING WEDDING BACKDROP

A homestead long admired by royalty and dignitaries, Chatsworth House provides the perfect venue for weddings and other

functions. Whether you choose an intimate gathering or a lavish affair, be assured your special day will be totally unique and unforgettable.

The historic gardens of Chatsworth House are a perfect setting for a romantic celebration. The Rose Garden, fountains, secluded courtyards and lawns ensure an elegant and stylish setting with the homestead as your backdrop.

Nature lovers may choose an ancient red gum as the site to take their vows. The beautiful grounds can be used for stunning photographs while your guests are treated to a sophisticated pre-dinner cocktail function on the homestead verandah and lawns.

Boutique accommodation is available for up to 50 guests in rustic bluestone apartments and three charming country cottages. All accommodation is self-catering (although catering can be arranged) and offers the opportunity to gather privately with family

For more information

LOCATION: Chatsworth House is 2.5 hours drive from Melbourne, 70km from Hamilton, 80km from Warrnambool and 125km from Ballarat.

ACCOMMODATION: Boutique accommodation is available for up to 50 guest in bluestone apartments and three country cottages. Additional accommodation options for your guests are available with 15 minutes of Chatsworth House.

PHONE: 0409 101 657

EMAIL:
info@chatsworthhousefunctions.com.au

WEBSITE:
chatsworthhousefunctions.com.au



and friends prior to your wedding or to farewell your guests the next morning with a barbeque brunch.

THE LONGROOM

The substantial bluestone building now known as the Longroom, was once the mens' quarters on the original Cobb & Co route and the stables that run parallel to them have been well maintained and were completed in 1867. The complex also originally included a school and church. The Longroom was renovated by the current owners in 2002 and then completed in 2006, when the remaining quarters at the western end of the building were converted to accommodation.

The baronial bluestone Longroom Reception Hall is only a short stroll from the homestead and can accommodate up

to 120 seated guests, including a private sitting room. In summer or in winter, with the fire blazing, the atmosphere is electric.

HISTORIC HERITAGE GARDENS

Chatsworth House gardens were designed by the noted garden designer Edward La Trobe Bateman in 1867. Bateman, a cousin of Charles Joseph La Trobe, Superintendent of the colony, was one of Victoria's first garden designers. Bateman designed more than 15 public and private gardens in Victoria, including plans for the Fitzroy and Carlton gardens, Melbourne University private gardens, Heronswood

and Barragunda on the Mornington Peninsula, and in the Western district at Wooriwyrite and Chatsworth.

The garden is entered through a planting of Monterey Pines and is laid out within a perimeter planting of mainly conifers. A feature of the garden is a curved cypress hedge which encloses the garden on the east side. The planting makes extensive use of conifers, - pines, cypress and cedars - oaks and figs, blue gums and remnant river red gums as specimen trees and in stands to create a 'picturesque' arrangement of trees in a parkland setting.



Have a very Hankie Christmas!



Boutique Handkerchiefs for women, men & children

Visit our e-boutique store at www.boutiqueh.com



CYCLING ELITE TOUR DOWNUNDER

The Santos Tour Down Under is Australia's premier international cycling race. It will be staged in and around Adelaide from 19 to 26 January 2014.

On Sunday 19 January the world's cycling elite will contest an exciting 50km circuit race, the People's Choice Classic, as the curtain raiser for the six-stage Santos Tour Down Under being raced over a total distance of 875km.

The Tour Stages will treat spectators to a variety of South Australian landscapes, with riders travelling through the Barossa Valley, then on to Prospect and Stirling. The Tour then heads from Norwood to Campbelltown before arriving at the stunning Victor Harbor before heading north through McLaren Vale and back to Adelaide.



Along with the world-class racing, visitors to the 2014 Santos Tour Down Under can enjoy an array of celebrations. These range from a free opening night concert on Saturday 18 January through to the final day of racing on Sunday 26 January.

With opportunities to glam up and rub shoulders with some of cycling's best at the Legends' Night Dinner, put some kilometres

into the legs as part of the Bupa Challenge Tour, sample South Australia's renowned food and wine, attend street parties and get to know the locals at one of the many community activities, there is something for everyone.

FLINDERS ISLAND



Best Reasons To Visit

These remarkable “mountains in the sea” offer you the holiday experience of a lifetime. Here you can get away from it all in an inspiring world of sparkling beaches, rugged ranges, abundant wildlife and flora, and clear sapphire waters. With a pleasant climate throughout the year and activities from boating, climbing, fishing, to exploring our historic sites.

WILDLIFE AND WONDERS

The fishing port of Lady Barron, nestled snugly in a sheltered corner of the coast; expansive wetlands noisy with migratory birds, long-distance travellers from the Arctic Circle; wallabies, wombats and Cape Barren geese, at home in their natural habitat of hillside and heath land; views to dream about - the sea boiling on reefs, islands in the tidal stream, a fretwork of mountains on the horizon - that's the south-east of Flinders.

The Furneaux Tavern

Flinders Island Tasmania



Situated on the waterfront the Furneaux Tavern is a favourite meeting place for locals and visitors and has one of Flinders Island's best views from the bar.

The Furneaux Tavern offers comfortable accommodation with 12 motel style units set amongst an acre of native gardens and magnificent water views.

The Tavern offers bistro dining in the Shearwater Restaurant, which serves local produce 7 days a week all year round.

Phone: 03 6359 3521

furneauxtavern.com.au



RUGGED AND REMOTE

Precious topaz, glinting among sand and gravel; the gleaming granite of Mt Killiecrankie; fishing boats tugging at their moorings and seabirds wheeling on the wind; a 30km beach, where lumps of black coal still wash up from the City of Foochow's scattered cargo; country roads, empty beaches and wide horizons - the northern part of Flinders has them all.





Deep Bite

CAFE • RESTAURANT • STORE

Flinders Island

TASMANIA





Restaurant dining with spectacular view of Mt Killiecrankie

527 Killiecrankie Rd, Killiecrankie, Flinders Island • (03) 6359 8499

Email: deepbitecafe@gmail.com • Night Dining Bookings preferred



MOUNTAINS IN THE SEA

Lonely remnants of Bass Strait's ice age land bridge, dotting the sea all around; cradles of life for fish, dolphins, seals, gannets, shearwaters, pelicans; warm and welcoming in gentle summer breezes, wild and wonderful when the westerlies roar - Flinders is surrounded by a scattering of islands, ancient hilltops and peaks left high and dry when the glaciers melted.

STRZELECKI AND SETTLEMENTS

Strzelecki's sky-piercing granite crags, towering beyond bright half-moon beaches; purple irises nodding around Wybalenna's red brick chapel, full of poignant memories; peaks and high places, with views across farmlands, coastlines and the blue shifting sea - south-west Flinders combines many of the island's varied qualities.

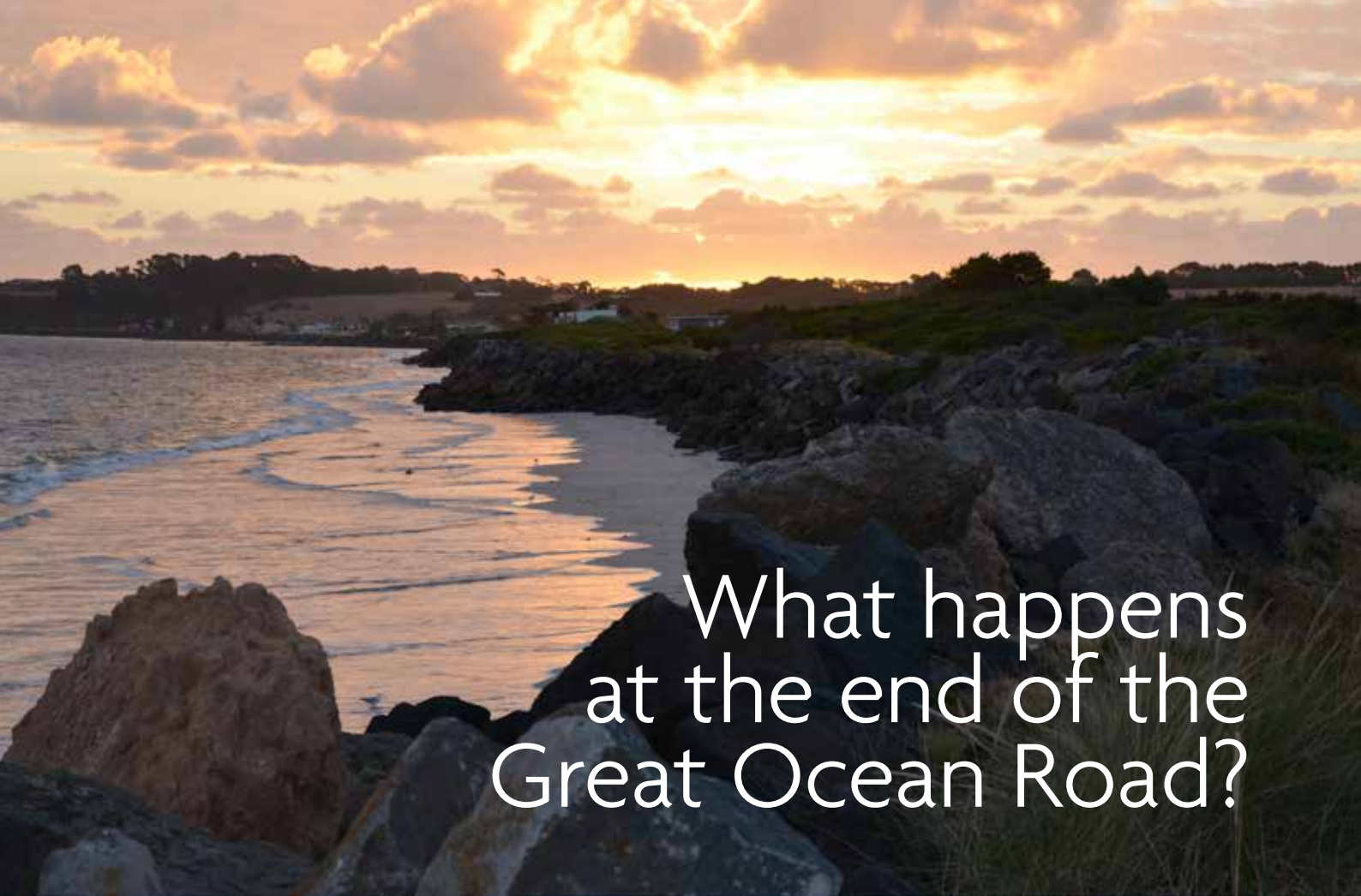


AN ISLAND FOR ALL SEASONS

The Southern Rock Lobster (crayfish) season begins on 15th November and closes in September. Killiecrankie Enterprises sell cooked or live crayfish during most of the season. In order for the crayfish to be fresh as possible please order in advance - at least a day before it is required.

See more at: www.visitflindersisland.com.au





What happens at the end of the Great Ocean Road?

Henty Bay Beachfront Holiday Resort in Portland is the destination not to be missed this summer. With the first cruise ship, MS Europa, scheduled to dock in March, Henty Bay has a bright future as a holiday destination.

You now have the opportunity to share ownership in the resort, with land and villas now available for purchase. Live permanently, invest or have the ideal beachfront holiday home!

With a serene backdrop of rolling hills and an ocean frontage of over 500m, the recently upgraded beachfront holiday resort, Henty Bay, offers the astute purchaser a range of options including vacant sites or 1, 2 or 3 bedroom villas.

If you are after an investment property we guarantee a 9.25% net return for 3 years. Or you, your family or friends may use your site or villa periodically throughout the year and resort management can let it for you when you're not using it.

During your next stay at Henty Bay Beachfront Holiday Park you are more than welcome to inspect the new display villas, enjoy the sunshine in our licensed beer garden or enjoy a meal at our impressive beachfront kiosk and BBQ area. Bring the family and enjoy our pitch and put golf range over 300m in length, children's playground and water activities for.

Fisherman are most welcome and you can even bring your boat, as sites with villas can facilitate lockable garages for secure

parking. We have our own boat ramp and fish cleaning facility plus plenty of BBQ's to grill your catch.

Whether you're an investor, an owner occupier or you would like a little bit of both, we have the flexible options you desire.

Sites are priced from \$55,000 for land with title or \$95,000 with a villa. We can also assist with your finance needs.





Essendon Airport growth planned

FROM MOONEY VALLEY LEADER

A car dealership, mall, hotel and hospital feature in Essendon Airport's five-year master plan, which chief executive Chris Cowan says will deliver more than extra flights.

He said aviation operations remained the facility's "key obligation", but it would focus on creating an activity centre between Melbourne Airport and the city.

The master plan also flagged the possibility of establishing a hospital on-site to complement existing emergency services. Mr Cowan said they'd had multiple inquiries from hospital operators, which could offer a daytime or full service as a new development or in one of the existing buildings.

BEAUFORT NORTH AND WIRRAWAY NORTH PRECINCT

AutoCentro is "definitely" Melbourne's best motor vehicle outlet strip, traders say, and plans are afoot for it to double.

Ian Oats, sales manager of Airport Toyota, said Auto Centro was "customer-friendly".

"It has made it easier for customers to shop around as they can walk across the road into other dealerships," Mr Oats said.

Nine dealerships offer 12 brands, but the airport expects to add up to 10 more dealerships within the next five years.

ENGLISH STREET PRECINCT

A hotel could be built at Essendon Airport within five years to meet demand for conference space in the north-western





region. The 150-room hotel has been proposed for the English St Precinct, with associated conference and food and beverage facilities.

Other proposals for the precinct include the refurbishment of heritage buildings and hangars for office or retail use and 10,000sqm of new commercial floor space with car parking. The airport's first long-term car park, with up to 150 spaces, has been proposed for miners who use fly-in and flyout operations.

HART PRECINCT

Essendon Airport hopes to build a new road within five years for commercial development in the eastern precinct. The Hart Precinct is partly landlocked by both airport runways and only accessible through airside roads or private gates from Strathmore.

About 50,000sqm would be available for light industrial uses, such as warehouses, offices, vehicle storage and hangars.

BULLA PRECINCT

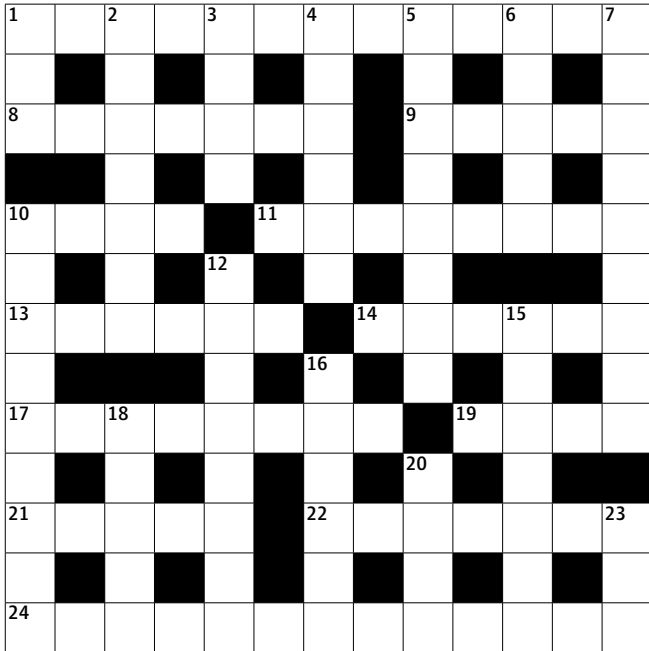
More shops and car parking have been flagged for Essendon Fields' retail precinct over the next five years. Up to 15,000 sqm of retail development and additional car spaces have been proposed. Direct Factory Outlet and Homemaker Hub were developed between 2004 and 2007 and now occupy 60,000 sqm of space.



Sharp Minds

Sharpen your brain with these tricky little quizzes!

CROSSWORD



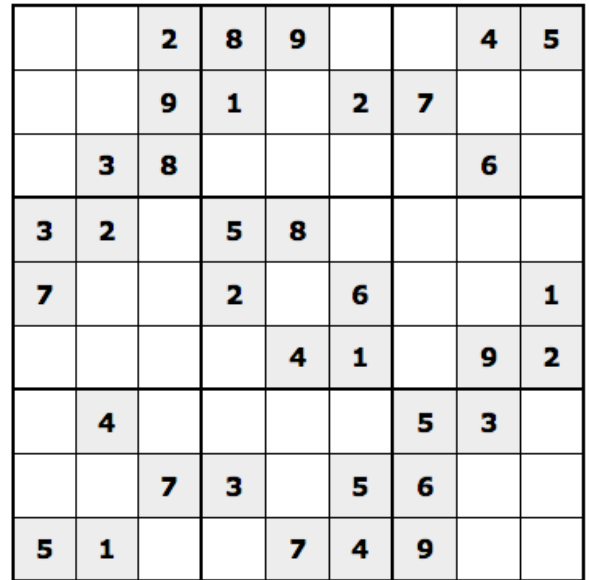
ACROSS

- 1 Too slight to be noticed (13)
- 8 Novice (7)
- 9 More proficient (5)
- 10 Turnip (4)
- 11 Porgy and Bess composer (8)
- 13 Looked for (6)
- 14 Debacle (6)
- 17 Seductive (8)
- 19 Blow over (4)
- 21 Spiny evergreen shrub (5)
- 22 Big read (anag) — shorten text (7)
- 24 Paris landmark (3,2,8)

DOWN

- 1 Unwell (3)
- 2 Tableland (7)
- 3 Landlord's income (4)
- 4 Merited (6)
- 5 Broadcast (8)
- 6 Lower than (5)
- 7 Incorrect (9)
- 10 Yearning for the past (9)
- 12 Observant or alert folk need one of these — pays here (anag) (5,3)

SUDOKU



WORD FIND

J U N E S T S S S S Y K S E U L B M
 U S M E A U Y E O U H I K I N G S A
 S M W E E A N L U B N W A S E Y R E
 U T W I R R S G I C A B L N A R E R
 N S H V M T C C L T E A U D T V L C
 T Y U G I M Y S E A D B I R S S K E
 A G L C I C I R N N S L R R N D N C
 N R E U L F M N A U O S E A R G I I
 O E A E J E R S G H S W E A B N R C
 S E D A L B R E L L O R O S R I P R
 C N A O F L O G T L T B T E E T S E
 H G N I H S I F F A E O A E E A H C
 O R C A M P I N G T W T H B Z O C C
 O A C I N C I P A W A S P S E B A O
 L S F L I E S K M O S Q U I T O E S
 T S U G U A S I L L A B E S A B B O
 G N I N E D R A G S U N S H I N E N

ANTS
 AUGUST
 BARBECUE
 BASEBALL
 BEACH

BEES
 BICYCLE
 BLUE SKY
 BOATING
 BREEZE

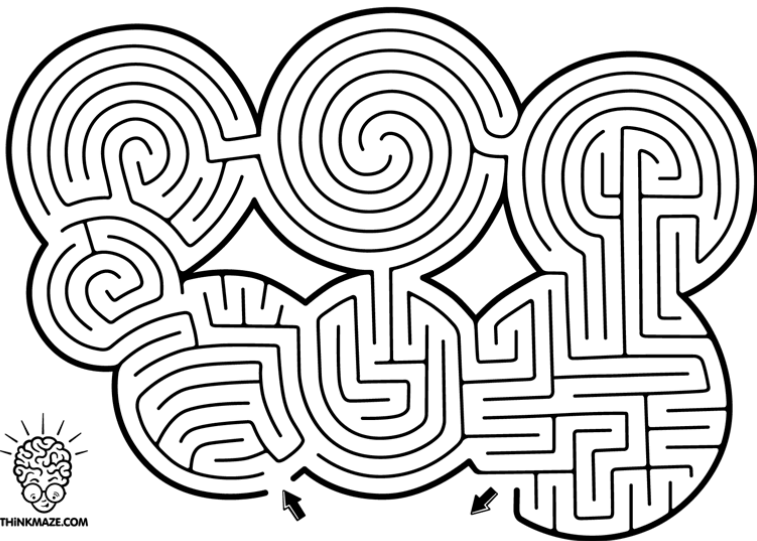
CAMPING
 FISHING
 FLIES
 FLOWERS
 GARDENING

GOLF
 GREEN GRASS
 HAT
 HIKING
 HOLIDAYS

HOT
 ICE CREAM
 JULY
 JUNE
 MOSQUITOES
 NO SCHOOL
 PICNIC
 ROLLER BLADES
 SANDALS
 SKATEBOARD
 SOCCER
 SOLSTICE
 SPRINKLERS
 SUNBURN
 SUNGLASSES
 SUNSCREEN
 SUNSHINE
 SUNTAN
 SWEAT
 SWIMMING
 U V RAYS
 WASPS
 WATER FIGHTS
 WATERMELON

Sharp Kids

MAZE

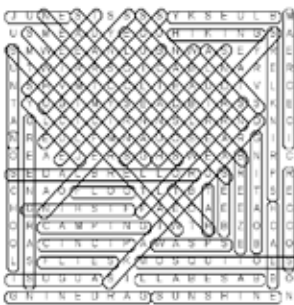


COLOURING IN



ANSWERS

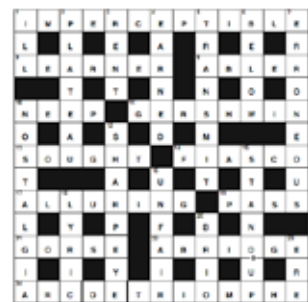
WORD FIND



SUDOKU

6	7	2	8	9	3	1	4	5
4	5	9	1	6	2	7	8	3
1	3	8	4	5	7	2	6	9
3	2	1	5	8	9	4	7	6
7	9	4	2	3	6	8	5	1
8	6	5	7	4	1	3	9	2
2	4	6	9	1	8	5	3	7
9	8	7	3	2	5	6	1	4
5	1	3	6	7	4	9	2	8

CROSSWORD



Sharp Airlines Office Hours

Sharp Airlines have new office hours

Monday to Friday - 8.30am to 5.30pm EST

Saturday & Sunday - Closed

CLOSED - Good Friday and Christmas Day

Please note these schedules are subject to change without notice please visit sharppairlines.com.au for the latest information.

Please refer to sharppairlines.com.au for flight availability on public holidays*

Phone: 1 300 55 66 94



Melbourne Flight Schedules

From 1st December 2013

Melbourne (Essendon) to Hamilton										
Essendon to Hamilton	Departure time	Arrival Time	Flight No.	Frequency			No. Stops			
	0820	0910	SHARP822	Mo	Tu	We	Th	Fr		NON STOP
	1120	1210	SHARP834						Sa	NON STOP
	1650	1740	SHARP842						Su	NON STOP
	1755	1845	SHARP828	Mo	Tu	We	Th	Fr		NON STOP
Hamilton - Essendon	Departure time	Arrival Time	Flight No.	Frequency			No. Stops			
	0705	0750	SHARP821	Mo	Tu	We	Th	Fr		NON STOP
	1005	1050	SHARP833						Sa	NON STOP
	1535	1620	SHARP841						Su	NON STOP
	1640	1725	SHARP827	Mo	Tu	We	Th	Fr		NON STOP

Melbourne (Essendon) to Portland										
Melbourne (Essendon) to Portland	Departure time	Arrival Time	Flight No.	Frequency			No. Stops			
	0820	0945	SHARP822	Mo	Tu	We	Th	Fr		1 STOP HML
	1120	1245	SHARP834						Sa	1 STOP HML
	1650	1815	SHARP842						Su	1 STOP HML
	1755	1920	SHARP828	Mo	Tu	We	Th	Fr		1 STOP HML
Portland to Melbourne (Essendon)	Departure time	Arrival Time	Flight No.	Frequency			No. Stops			
	0630	0750	SHARP821	Mo	Tu	We	Th	Fr		1 STOP HML
	0930	1050	SHARP833						Sa	1 STOP HML
	1500	1620	SHARP841						Su	1 STOP HML
	1605	1725	SHARP827	Mo	Tu	We	Th	Fr		1 STOP HML

Adelaide Flight Schedules

From 1st December 2013

Adelaide to Port Augusta										
Adelaide – Port Augusta	Departure time	Arrival Time	Flight No.	Frequency			No. Stops			
	0645	0735	SHARP861	Mo	Tu	We	Th	Fr		NON-STOP
	1715	1805	SHARP867	Mo	Tu	We	Th	Fr		NON-STOP
Port Augusta - Adelaide	Departure time	Arrival Time	Flight No.	Frequency			No. Stops			
	0750	0840	SHARP862	Mo	Tu	We	Th	Fr		NON-STOP
	1820	1910	SHARP868	Mo	Tu	We	Th	Fr		NON-STOP

Flinders Island Flight Schedules

From 16th December 2013 - 13th April 2014

Flinders - Launceston										
Flinders Island - Launceston	Departure time	Arrival Time	Flight No.	Frequency				No. Stops		
	0855	0930	SHARP802	Mo	Tu	We	Th	Fr	Sa	NON-STOP
	1455	1530	SHARP806	Mo	Tu	We	Th	Fr		NON-STOP
	1655	1730	SHARP808	Mo	Tu	We	Th	Fr		NON-STOP
	1825	1900	SHARP814						Su	NON-STOP
Launceston - Flinders Island	Departure time	Arrival Time	Flight No.	Frequency				No. Stops		
	0800	0835	SHARP801	Mo	Tu	We	Th	Fr	Sa	NON-STOP
	1000	1035	SHARP803	Mo	Tu	We	Th	Fr		NON-STOP
	1600	1635	SHARP807	Mo	Tu	We	Th	Fr		NON-STOP
	1430	1505	SHARP811						Su	NON-STOP

Flinders Island to Melbourne (Essendon)										
Flinders Island - Essendon	Departure time	Arrival Time	Flight No.	Frequency				No. Stops		
	1055	1200	SHARP804	Mo	Tu	We	Th	Fr		NON-STOP
	1525	1630	SHARP812						Su	NON-STOP
Essendon - Flinders Island	Departure time	Arrival Time	Flight No.	Frequency				No. Stops		
	1330	1435	SHARP805	Mo	Tu	We	Th	Fr		NON-STOP
	1700	1805	SHARP813						Su	NON-STOP

Daylight Savings Schedule changes for Sunday 6th April and Sunday 13th April only:

Flinders - Launceston										
Flinders Island - Launceston	Departure time	Arrival Time	Flight No.	Frequency				No. Stops		
	1725	1800	SHARP814						Su	NON-STOP
Launceston - Flinders Island	Departure time	Arrival Time	Flight No.	Frequency				No. Stops		
	1330	1405	SHARP811						Su	NON-STOP

Flinders Island to Melbourne (Essendon)										
Flinders Island - Essendon	Departure time	Arrival Time	Flight No.	Frequency				No. Stops		
	1425	1530	SHARP812						Su	NON-STOP
Essendon - Flinders Island	Departure time	Arrival Time	Flight No.	Frequency				No. Stops		
	1600	1705	SHARP813						Su	NON-STOP

Note: Please refer to our website www.sharpairlines.com.au for flight availability on public holidays

King Island Flight Schedules From 1st December 2013

Burnie (Wynyard) – King Island – Burnie (Wynyard)											
Burnie – King Island	Departure time	Arrival Time	Flight No.	Frequency			No. Stops				
	0755	0835	SHARP892	Mo	Tu	We	Th	Fr		NON-STOP	
	1045	1125	SHARP896						Sa	NON-STOP	
	1605	1645	SHARP894	Mo	Tu	We	Th	Fr		Su	NON-STOP
King Island - Burnie	Departure time	Arrival Time	Flight No.	Frequency			No. Stops				
	0855	0935	SHARP893	Mo	Tu	We	Th	Fr		NON-STOP	
	1145	1225	SHARP897						Sa	NON-STOP	
	1705	1745	SHARP895	Mo	Tu	We	Th	Fr		Su	NON-STOP

Launceston – King Island - Launceston											
Launceston – King Island	Departure time	Arrival Time	Flight No.	Frequency			No. Stops				
	0710	0835	SHARP892	Mo	Tu	We	Th	Fr		ONE STOP	
	1000	1125	SHARP896						Sa	ONE STOP	
	1520	1645	SHARP894	Mo		We		Fr		Su	ONE STOP
King Island - Launceston	Departure time	Arrival Time	Flight No.	Frequency			No. Stops				
	0855	1020	SHARP893	Mo		We		Fr		ONE STOP	
	1145	1310	SHARP897						Sa	ONE STOP	
	1705	1830	SHARP895	Mo	Tu	We	Th	Fr		Su	ONE STOP

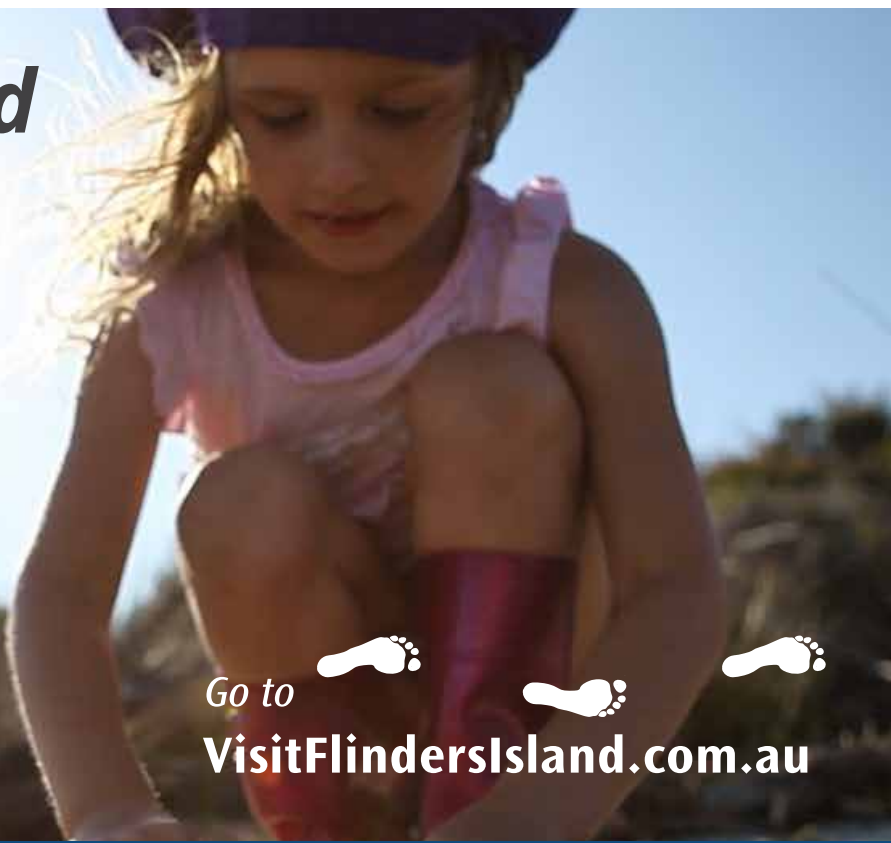
Where we fly.

Book your Sharp Connection today!
 1300 55 66 94 | sharplines.com.au

sharp
airlines

Flinders Island

experience the good life...



Go to



Visit FlindersIsland.com.au

Fly to Flinders Island
book your holiday with sharpairlines.com.au
Call **1300 55 66 94**



sharp airlines
www.sharpairlines.com

BEACHFRONT LIVING AT ITS BEST



BEACHFRONT HOLIDAY PARK

CABINS-CAMPING-BOAT RAMP-SANDY BEACH



Henty Bay Beachfront Holiday Park, Portland's only beachfront holiday village has its own private beach, boat ramp, beer garden, restaurant, kiosk, fish cleaning facility and 500m of absolute ocean frontage.

You can now purchase within this resort village and live permanently, have your own family holiday home or generate income from lettings when you're not using it. Investors are offered high returns of 9.25% net

Entry prices are as little as \$55,000 for vacant land or \$95,000 for existing land and villas.

Visit our new displays (arriving 23rd December 2013)

Mention this ad when booking your accommodation and receive 10% discount.

342 Dutton Way, Portland

For sales enquiries please call 5523 3716 or 9682 1078

info@hentybay.com.au

www.hentybay.com.au

Festival of King Island

FRIDAY 31 JAN - SUNDAY 2 FEB

BENJALU **Kim Churchill**
other top acts TBC

returning artist
Cameron Oates

LOCAL
MUSICIANS

**BOOK
YOUR
FLIGHTS
NOW**

*waterslide
raft race
pie-eating comp*

