

sharp

TRAVELLER
ACTIVITIES / DESTINATIONS / EVENTS



**THE MOONBIRD
FESTIVAL**

**AUSTRALIAN MUSICAL
THEATRE FESTIVAL**

**MELBOURNE DESIGN
WEEK 2024**





Welcome!



RESERVATIONS & ENQUIRIES

CALL 1300 55 66 94

sharpairlines.com.au

HEAD OFFICE

44 Gray Street
Hamilton Victoria 3300
T: 1300 55 66 94
E: reservations@sharpairlines.com.au

LIKE TO ADVERTISE?

Editorial & Advertising
Contact Heidi Jarvis
T: 0438 778 161
E: heidi@organisedsuccess.com

COVER IMAGE

Australian musical theatre festival performance

Later this year marks the 34th year since Sharp Airlines commenced operations with one single engine aircraft providing flight training at Hamilton Airport in Victoria.

Today headquartered in Melbourne Sharp Airlines employees more than 100 staff and operate 17 Metro liner Aircraft across Australia

The constant guiding principles from those early days which remains very much in our DNA today, is an uncompromising commitment to safety, service quality and to exceed our customer expectations.

We deliver personalised and memorable service to every passenger Every Flight - Every Day

As I reflect on our past 34 years we have trained thousands of pilots the majority of whom have gone onto to build their careers with domestic and international airlines, carried hundreds of thousands of passengers, operated charter and FIFO services throughout Australia, provided vital airline services to the remote Bass Strait communities of King and Flinders Islands and have uplifted many millions of kilograms of freight

None of this would have been possible without two inter twinged constants

Our loyal and supportive customers across our network who have grown with and supported us on our journey and our and dedicated commitment of our staff past and present, who have all contributed to the success and development of Sharp Airlines

Since we commenced operating the years have "flown quickly" and I am humbled to be the Managing Director of a Company that has redefined the aviation bench marks of excellence and professionalism.

I wish to say thank you to all of our customers for their continued support.

I am and together we are Sharp Airlines.



Malcolm Sharp
Managing Director/
Head of Flight Operations

Tasmanian owned & operated
COMMERCIAL & RESIDENTIAL PROPERTY SALES, LEASING & MANAGEMENT



Howell Property Group | howellpropertygroup

In This Edition

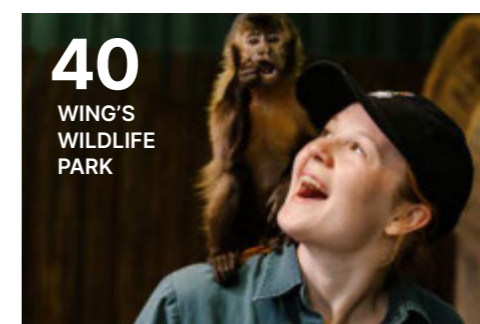
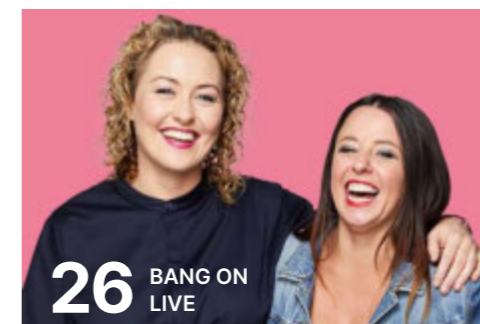


TABLE CAPE

The magnificent plateau of Table Cape is by far Wynyard's most remarkable natural wonder. Sitting at 180 metres high, 'The Cape' - as locals refer to it - dominates the Wynyard coastline and offers spectacular views of Tasmania's coast and agricultural farmlands.



Table Cape
Credit: Tourism Tasmania & Peter Bellingham



Tulip Farm, Table Cape
Credit: discovertasmania



Lighthouse, Table Cape
Credit: visitwaratahwyndard

As you drive to the top of the remains of a 12 million-year-old volcano you'll reach Table Cape lookout where, on a clear day, you can see George Town's Low Head and mountain ranges over 175 kilometres away. Take a short stroll along the cliff-top walking track to the Table Cape Lighthouse.

Table Cape is also home to the Table Cape Tulip Farm where acres of patchwork fields explode with colour each spring. This is a sight that will leave you breathless, so be sure to add a trip to Wynyard and Table Cape to your itinerary this spring. No visit to Table Cape is complete without a drive along the scenic Tollymore Road towards Boat Harbour Beach, where you will discover stunning coastal vistas, boutique accommodation and the award-winning Alchymia Distillery.

History

Table Cape is an extinct volcano located near Wynyard on the North West of Tasmania, Australia, it is also the name of the locality which encompasses the geological feature. Table Cape is a more or less circular extinct volcano with a flat top, its northern and eastern faces rise steeply from Bass Strait to a height of approximately 170 metres (560 ft) above sea level. It was named by British navigator, Matthew Flinders, as he and George Bass circumnavigated then Van Diemen's Land in 1798 upon the Norfolk. Flinders also progressively named the nearby Circular Head, Three Hummock and Hunter Islands.



Table Cape
Credit: Tourism Tasmania & Peter Bellingham

Table Cape's top and surrounding areas are composed of fertile basalt soils and are heavily cultivated, the area is renowned for the annual flowering of tulips during spring and accompanying tulip festival. The 2011 census determined a population of 324 for the state suburb of Flowerdale, which the locality of Table Cape forms part of.

Landscape and conservation Whilst the top of Table Cape and surrounding district is heavily utilised for agriculture, the steep and rocky ocean-facing embankments remain largely undisturbed from human activity and are covered in dense scrubland. The 1.26 km² Table Cape Conservation Area extends along the shoreline from Boat Harbour Beach to the Table Cape State Reserve (before continuing along to Freestone Cove near Fossil Bluff).

Beddomeia capensis is an endangered freshwater snail known only to occur along four small streams on Table Cape, and a tributary of Big Creek near Calder. However, recent surveys have only been able to identify the species at two unnamed streams near the Table Cape Lighthouse, with the total length of occupied stream less than 80 metres (260 ft). Population declines are due to habitat degradation from agricultural land usage and competition from other introduced hydrobiid snails.

Tommeginer Aboriginal clan

The territory of the Tommeginer clan of Aboriginal Tasmanians is located around the Table Cape region. The tribe most likely built the stone tidal fish traps that remain evident at nearby Freestone Cove.

Table Cape Lighthouse Table Cape Lighthouse is a Tasmanian heritage-listed lighthouse situated on the 120 hectare Table

Cape State Reserve. It has been open for public tours since 2010.

After the wrecks of the Emma Prescott in 1867 and the schooner Orson in 1884, a lighthouse was commissioned to be constructed on Table Cape to aid navigation into the port of Wynyard on the Inglis River. Table Cape Lighthouse was designed by Huckson and Hutchinson of Hobart, the light apparatus was sourced from the Chance Brothers of England and was constructed by a local builder, John Luck. The project suffered from delays due to poor quality roads leading up to the construction site on Table Cape, and bricks of insufficient quality sourced from the specially-constructed kiln in the nearby town of Burnie, instead, bricks had to be imported from Victoria.

The lighthouse was first lit up on 1 August 1888, it stands about 25 metres (82 ft) high and has a diameter of 8.5 metres (28 ft) at the base. Seventeen days after the official opening, the head lighthouse keeper's 14-month-old son died from illness. The undertaker, who had travelled up to the lighthouse with a coffin for the child, encouraged the family to perform the burial nearby due to the appalling weather conditions at the time. The small gravesite remains to be found nearby today. Originally powered by oil, Table Cape Lighthouse was converted to automatic acetylene operation in 1920. In 1923, the lightkeepers were withdrawn from manning the tower, and after several years of deterioration, the nearby keepers' cottages were demolished in 1926. In 1979, mains electricity was connected and an electric beacon with standby batteries was installed, the maximum nominal range of the 100W halogen lamp is approximately 16 nautical miles (30 km; 18 mi).

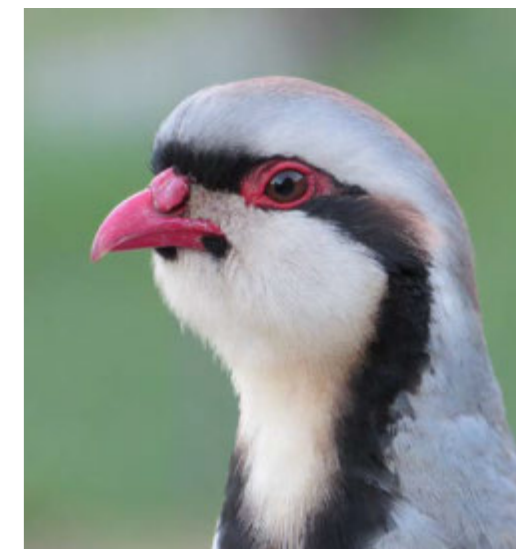


Partridge Farm

Discover the enchanting Partridge Farm B&B, a hidden gem nestled at the scenic southern end of Flinders Island. Surrounded by majestic eucalyptus trees, this self-contained holiday accommodation offers breathtaking vistas of Franklin Sound and the outer Furneaux Islands.

Partridge Farm comfortably accommodates up to 12 guests.

for bookings and further details visit www.partridgefarm.com.au



THE TULIP FARM

Our business, Van Diemen Quality Bulbs, operates from Table Cape Tulip Farm, which is situated in a truly iconic location on the North West coast of Tasmania.

Table Cape is an extinct volcanic vent dominating the coastline close to the town of Wynyard. Its 180m cliffs drop away into Bass Strait and Table Cape Tulip Farm is perched on the top.

During late September through to mid October the farm explodes with colour. People come from far and wide to see this spectacle and delight at walking amongst the tulips. We understand that they are the largest tulip fields in the Southern Hemisphere that you can actually wander in.

It is a lure for photographers who have the opportunity to take fantastic shots utilising backdrops of Bass Strait, the lighthouse and the surrounding rich farmlands to showcase the vista of colourful blooming fields.



VAN DIEMEN QUALITY BULBS

The Table Cape Tulip Farm is home to Van Diemen Quality Bulbs. We are specialist flower bulb producers and farmers who grow more than just tulips. The farm also specialises in Liliiums and Dutch Iris as well as many other bulbs and plants which we sell directly to customers through our mail order and online catalogue. To see how we can colour up your garden, see our website at www.vdqbulbs.com.au



Table Cape Tulip Farm
Credit: Tourism Australia

Table Cape Tulip Farm
Credit: Tourism Australia



Table Cape Tulip Farm
Credit: Tourism Australia



TABLE CAPE TULIP FARM

In 2024 the farm will open from the 26th of September until the late October

Walk in the hectares of tulips that flower for one month every spring. Our farm operates all year round, but spring is when it comes alive with colour.

Farm open days

26th September - to late October 9am - 5 pm everyday - tickets at the door.

Best viewing is normally from end of the first week to the end of the second week in October

Our place is a real farm, we recommend appropriate footwear.

Ticket prices

- Adults: \$15
- Seniors/Concessions/Student: \$13
- Children 6-17: \$2
- Under 6 free



Table Cape Tulip Farm
Credit: Tourism Australia



Table Cape Tulip Farm
Credit: Tourism Australia

WHAT TO SEE AND DO AT THE FARM

During our spring open days we have hectares of tulips to walk in and enjoy. We also have a impressive indoor display featuring floral arrangements, souvenirs, Devonshire teas, an art gallery, potted tulips, cut flowers and information on growing bulbs. We are open for bulb sales other times of the year, please phone ahead to check if we are open, we might be out farming.



Table Cape Tulip Farm
Credit: Tourism Australia



Table Cape Tulip Farm
Credit: Tourism Australia



Table Cape Tulip Farm
Credit: Tourism Australia

TULIP FESTIVAL - WYNYARD

The tulip festival returns on the 12th of October 2024
For over 30 years the Bloomin' Tulip Festival has made the local town of Wynyard buzz with activities, food, music, artists and festivities. For one Saturday each October the festival tempts visitors and locals alike to shake off the

doldrums of winter and welcome in spring with joy and colour. The farm is a central part of the festivities, with thousands of people travelling up the Cape to see the showpiece of the festival... the tulip flower itself.
For more information visit: tablecapetulipfarm.com.au.

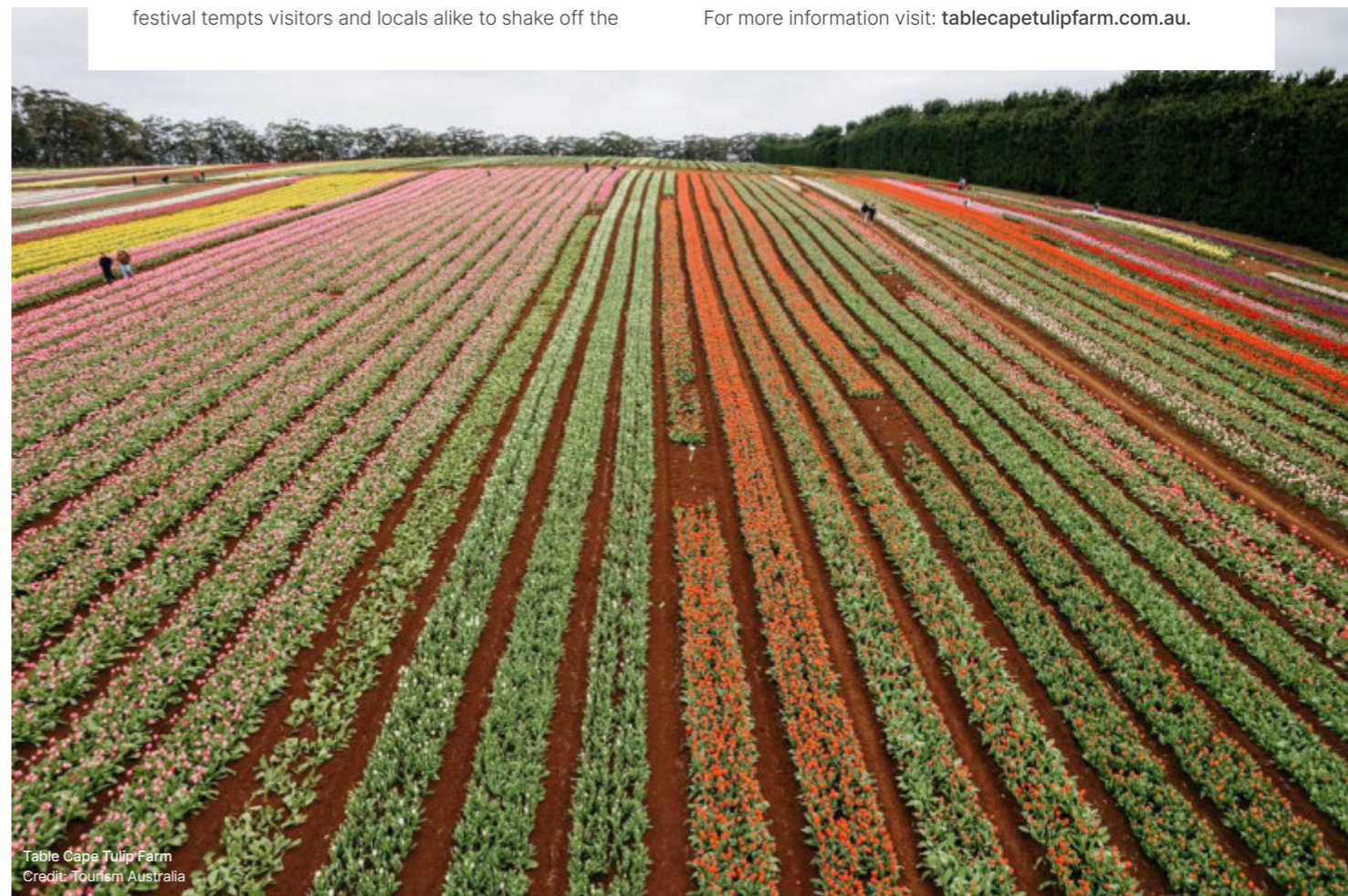


Table Cape Tulip Farm
Credit: Tourism Australia

AUSTRALIAN MUSICAL THEATRE FESTIVAL

LAUNCESTON, TASMANIA

15 – 19 MAY 2024



Credit: Cameron Jones Visuals

John Bucchino, Josh Piterman, Patrice Tipoki,
Kerrie Anne Greenland, Queenie van de Zandt, Tyran Parke,
Natalie Gamsu, Nicole Farrow, Samantha Hammersley and more...



Credit: Cameron Jones Visuals

2024 is the fifth year of the Australian Musical Theatre Festival and to celebrate the success of this inspiring musical event, Artistic Director, **Tyran Parke** has curated 19 events over five days from **Wednesday 15 to Sunday 19 May**. Musical theatre lovers will experience music in the most unlikely of places from Launceston's picturesque Cataract Gorge to a Theatre foyer or a hotel bar.

This year Tyran is proud to present not one but three musicals the first *IT'S ONLY LIFE* with the composer, **John Bucchino** at the piano who will be visiting from Broadway, *MARRY ME A LITTLE* a compilation of material cut from **Stephen Sondheim's** greatest shows and a total transformation of *NINE THE MUSICAL* performed on the stage of the beautiful Princess Theatre.



Credit: Cameron Jones Visuals



Credit: Cameron Jones Visuals



Credit: Cameron Jones Visuals



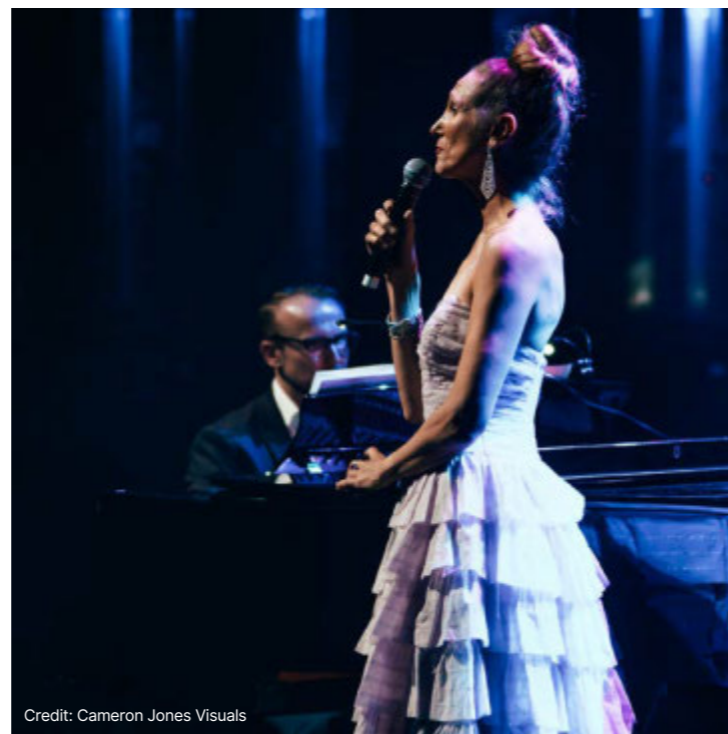
Credit: Cameron Jones Visuals

When announcing the festival Tyrn said
 “It is a true joy to present
 the 2024 Australian Musical
 Theatre Festival program,
 which continues to celebrate,
 cultivate and educate around
 one of the world’s most thrilling
 (and most popular!) art forms.

*Launceston again provides a truly unique stage,
 allowing us to align the magic of Tasmanian culture
 with both traditional and contemporary musical
 theatre, through a variety of offerings that are
 unexpected, thrilling and inspiring. This is musical
 theatre unlike you’ve ever seen it.”*



Credit: Cameron Jones Visuals



Credit: Cameron Jones Visuals

The incomparable **Queenie van de Zandt** returns with
 “a buffet of entertainment on lazy Susan” putting the
 fate of the show in the hands of the audience all in
 the surrounds of the beautiful Cataract Gorge. First
 Nations music theatre artist **Brittany Shipway** will open
 the show.

Award winning artist **Natalie Gamsu** will perform
SHRAPNEL, an autobiographical evening of
 storytelling, music and a yearning to find her inner
 flamenco dancer in The Royal Oak Hotel.

The Hon. Nic Street, Minister for Stadia and Events,
 Tasmanian Government proudly endorsed the festival
 “With the announcement of the 2024 Program, it’s
 clear that the Australian Musical Theatre Festival
 has become a staple of Northern Tasmania’s winter
 offering. Putting Launceston into the spotlight once
 more, the Australian Musical Theatre Festival brings to
 the north Broadway stars, Australian musical theatre
 icons and an array of local talent all of whom will make
 the event this May truly memorable.”

CHOIR IN THE PUB returns to the Royal Oak Hotel
 this time with a trio of music theatre stars who have
 all headlined in LES MIS including **Josh Piterman**,
 direct from his portrayal of Jean Valjean in London’s
 West End, **Patrice Tipoki**, who played Fantine in the
 Australian tour and on the West End and **Kerrie Anne
 Greenland** who played Eponine.



Credit: Cameron Jones Visuals



Credit: Cameron Jones Visuals



Credit: Cameron Jones Visuals



Credit: Cameron Jones Visuals



Credit: Cameron Jones Visuals

Each night, following that evening's final performance, Launceston's Earl Arts Centre will be transformed into **THE DIVA DEN** hosted by a different local or national diva each night.

Crowd favourites **GHOSTLIGHT**, a behind the scenes peek into the Princess Theatre (perhaps accompanied by a ghost), **BUSKER'S ALLEY** showcasing the stars of tomorrow with the songs of yesteryear and **BACKWARDS AND FORWARDS** giving you rare access to many of Launceston's oldest buildings.

Combine music and local produce with **FOOD GLORIOUS FOOD** at the Harvest Markets and soak up the best of musical theatre at the **FOYER DOOR CONCERT** as emerging voices and stars of tomorrow fill the foyer of the Princess Theatre. **BEST OF BROADWAY** features a stunning array of artists singing your favourite Broadway memories.

Australian Musical Theatre Festival is an unparalleled opportunity for musical theatre lovers, creatives, and industry professionals to get together, share, nurture and celebrate this wonderful genre combined with the best of Tasmanian hospitality.

www.amtf.org.au

FB [@australianmusicaltheatrefestival](https://www.facebook.com/australianmusicaltheatrefestival)

The Australian Musical Theatre Festival is supported by the Tasmanian Government through Events Tasmania, the City of Launceston, Theatre North and many local businesses.



Credit: Cameron Jones Visuals

THE MOON~ BIRD FESTI~ VAL

KING ISLAND

The Moonbird Festival - King Island

Thu 18th Apr 2024, 7:00 pm
- Sun 21st Apr 2024, 7:00 pm AEST

After a highly successful launch in 2023, the Moonbird Festival returns in 2024, celebrating one of the most spectacular places on Earth, King Island, with music, art, food & wine.

Founded and directed by the Bowerbird Collective, this event brings together some of Australia's finest musicians for a series of spellbinding concerts.

The moonbird, or the Short-tailed Shearwater, is an iconic species of great cultural and ecological significance to the islands of the Bass Strait. The birds depart their colonies on King Island at the end of April to begin an annual 30,000km migration.

The Moonbird Festival unites art, science and conservation, and includes local culinary delights, and a series of intimate, world-class performances.

The Bowerbird Collective are internationally Acclaimed as multimedia storytellers and performers crossing the arts/science divide. They won a 2020 Ruby Award for their work 'Where Song Began', and the 2022 Independent Arts Foundation Award for Innovation for their work 'Life on Land's Edge'.



FESTIVAL OVERVIEW

- Saturday, April 13
5:00pm - Festival & Exhibition Opening - Waterwings Gallery
Exhibition of local and interstate artists. Short performance by the Bowerbird Collective.
- Sunday, April 14
4:00pm - Artist Talk - King Island Gallery
This free event features an artist talk by the Bowerbird Collective and a short performance as part of the 'Birds' exhibition. Please register using the Moonbird Festival ticketing page.
- Thursday, April 18
5:00pm - Guest Speaker - Currie Town Hall
TBA
6:00pm - Food & drinks - Currie Town Hall
7:00pm - Opening Concert - Currie Town Hall
Whispering Walls, an unmissable cinematic concert experience with live music by the Van Diemen's Fiddles
- Friday, April 19
7:30pm - Evening Recital - King Island Brewhouse
Where Water Meets - folk duo
- Saturday, April 20
11:00am - Morning Soirée at Red Hut
Australian, world, classical & folk music
5:30pm - Waterwings Concert
String quartets with canapés
- Sunday, April 21
9:30am - Free morning performance - Currie Harbour
Shakuhachi
11:00am - Morning Soirée at Yellow Rock
Solo Bach & string duos
5:30pm - Closing Concert - Currie Town Hall
Inspiring & uplifting music by all the festival artists

They have close relationships with major conservation organisations including BirdLife International and the East Asian-Australasian Flyway Partnership to communicate conservation objectives through performance, both live and digital. They have produced more than 250 concerts on tours throughout regional Australia in the last five years. Their albums of threatened birdsong and frog calls, 'Songs of Disappearance', released with BirdLife Australia and the Australian Museum FrogID project respectively, reached the Top 5 on the ARIA Albums chart in 2022, ahead of Adele and Ed Sheeran. The Bowerbird Collective created the musical soundtrack to 'Our Country', a 2022 production by Australian Geographic, Northern Pictures and Tourism Australia. They are founders and directors of the Moonbird Festival on King Island, TAS, and the Lyrebird Festival in the Blue Mountains, NSW.



MDT *design*

Individually designed, hand-made jewellery



AUSTRALIA'S MOST AWARD WINNING JEWELLERS

MDTDESIGN.COM.AU

348 COLLINS STREET MELBOURNE AUSTRALIA • 03 9654 6805 • SALES@MDTDESIGN.COM.AU



'Birds'

Until May 5
King Island Gallery

Kate Gorringer-Smith, 'Take Off'

In March and April the focus of the King Island Gallery will be on the beauty and fragility of birds. The gallery will be filled with artworks of migratory, endangered and other species, including the 'Wall of Wings', a large scale installation of Kate Gorringer-Smith, and winners of the 2023 Birdlife Australia photographic competition. Additionally, there will be an invited artists' exhibition and an open invitation for local creatives to fill the gallery shop with bird themed works.

'The Art of King Island'

April 14, 20, 21, 27, 28

Dianne Blake, 'King Island Melaleuca', 2015
Marilyn and Ken Chapman will welcome guests into their Currie home, Waterwings Studio, for this beautiful exhibition featuring local & visiting artists. The exhibition will draw on works from a range of media.

For many years, Marilyn and Ken ran the Portside Links Gallery at Grassy, which became a major tourism drawcard and played host to the Bowerbird Collective's 2019 performance of Where Song Began. Their new home and gallery just outside of Currie is a spectacular space with views of the Southern Ocean.

Then open 10-4pm,
April 14, 20, 21, 27, 28





Double J presents
**BANG ON
 LIVE**

Calling all members of the Bang Fam! Instead of simply enjoying them in your ears, in 2024, you can join Myf Warhurst and Zan Rowe in person when they bring their smash hit Double J podcast to the stage in cities across the country.

Kicking off in Adelaide as part of Adelaide Fringe Festival in February, followed by Newcastle, Perth and Hobart in March, Bendigo, Canberra, Melbourne and Brisbane in April, Sydney in May, Geelong in June, and finishing the tour with Wollongong, Cairns, Traralgon and Wyong in July, *Bang On Live* will see Myf and Zan debrief on the conversations of the week.

Myf and Zan said: "We're both ridiculously excited to be taking this podcast on a proper tour around the country for the first time, because we'll finally get to meet all of our fabulous listeners (our devoted Bang Fam) – they've been through so much with us over the last eight years.

Created in 2017 for a bit of fun, Bang On brings together two of Australia's most respected and loved music journalists and

presenters to chat music, art, life and stuff. It's all the biggest conversations you need to be across each week (but don't have the time to read a think-piece about).

The duo first met at a Radiohead concert in 2004 and became firm friends the following year when Zan began working full time at triple j. It's their endearing and enduring rapport that has made their podcast a huge success, and *Bang On Live* promises to be full of all the delightful pop culture moments and audience favourite segments of the podcast, plus special guests and those 'for the live show only' moments along the way.

“We simply cannot wait to see your faces and we guarantee to share wine time, probably laugh a lot, possibly cry just a little bit, and definitely do a faarshun parade together. It's gonna be a hoot!”

Tour Dates

CANBERRA

Fri 12 Apr
 Time: 6.30pm
 Tickets from: \$59
 Canberra Theatre Centre
<https://cmdy.live/BangOnCanberra>

MELBOURNE COMEDY FESTIVAL

Sat 13 Apr
 Time: 4.30pm
 Tickets from: \$59
 Comedy Theatre
<https://cmdy.live/MICF24BangOn>

BRISBANE COMEDY FESTIVAL

Sat 27 & Sun 28 Apr
 Time: Sat 4pm, Sun 3pm
 Tickets from: \$59
 Brisbane Powerhouse
<https://cmdy.live/BCF24BangOnLive>

SYDNEY COMEDY FESTIVAL

Sat 18 May
 Time: 5pm
 Tickets from: \$69
 Enmore Theatre
<https://cmdy.live/SCF24BangOn>

GEELONG

Sat 29 Jun
 Time: 6.15pm
 Tickets from: \$59
 Geelong Arts Centre
<https://cmdy.live/BangOnGeelong>

WOLLONGONG

Fri 5 Jul
 Time: 7.30pm
 Tickets from \$59
 Anita's Theatre
<https://cmdy.live/BangOnWollongong>

CAIRNS

Fri 12 Jul
 Time: 7.30pm
 Tickets from: \$59
 Cairns Performing Arts Centre
<https://cmdy.live/BangOnCairns>

TRARALGON

Fri 19 Jul
 Time: 8.30pm
 Tickets: \$59
 Gippsland Performing Arts Centre
<https://cmdy.live/BangOnTraralgon>

WYONG

Sat 27 Jul
 Time: 8pm
 Tickets from: \$52
 The Art House
<https://cmdy.live/BangOnWyong>

ESCAPE

**TO THE EDGE
OF THE WORLD**

Amid the sublime wilderness and
pristine air, discover world class
surfing, golf and produce.
Your escape awaits.



With its exquisite location, panoramic vistas, luxe cedar amenities and private beach access, Bass Lodge brings cosy refinement to the brazen beauty of the Bass Strait's crown jewel.

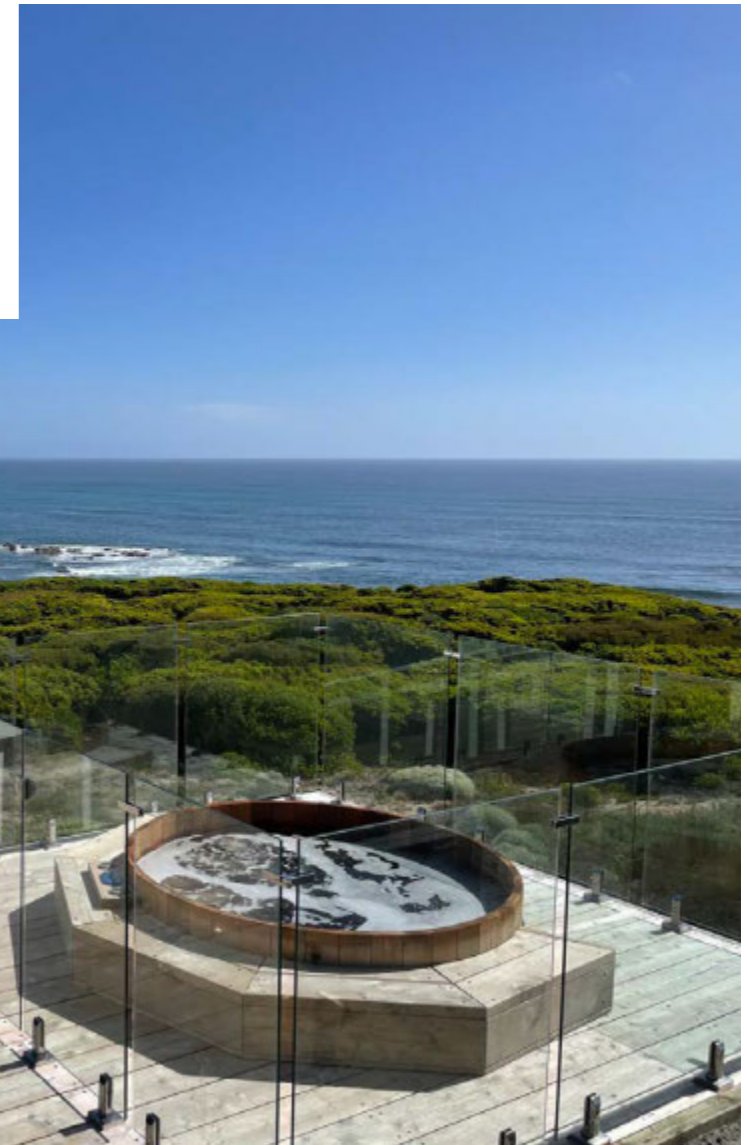


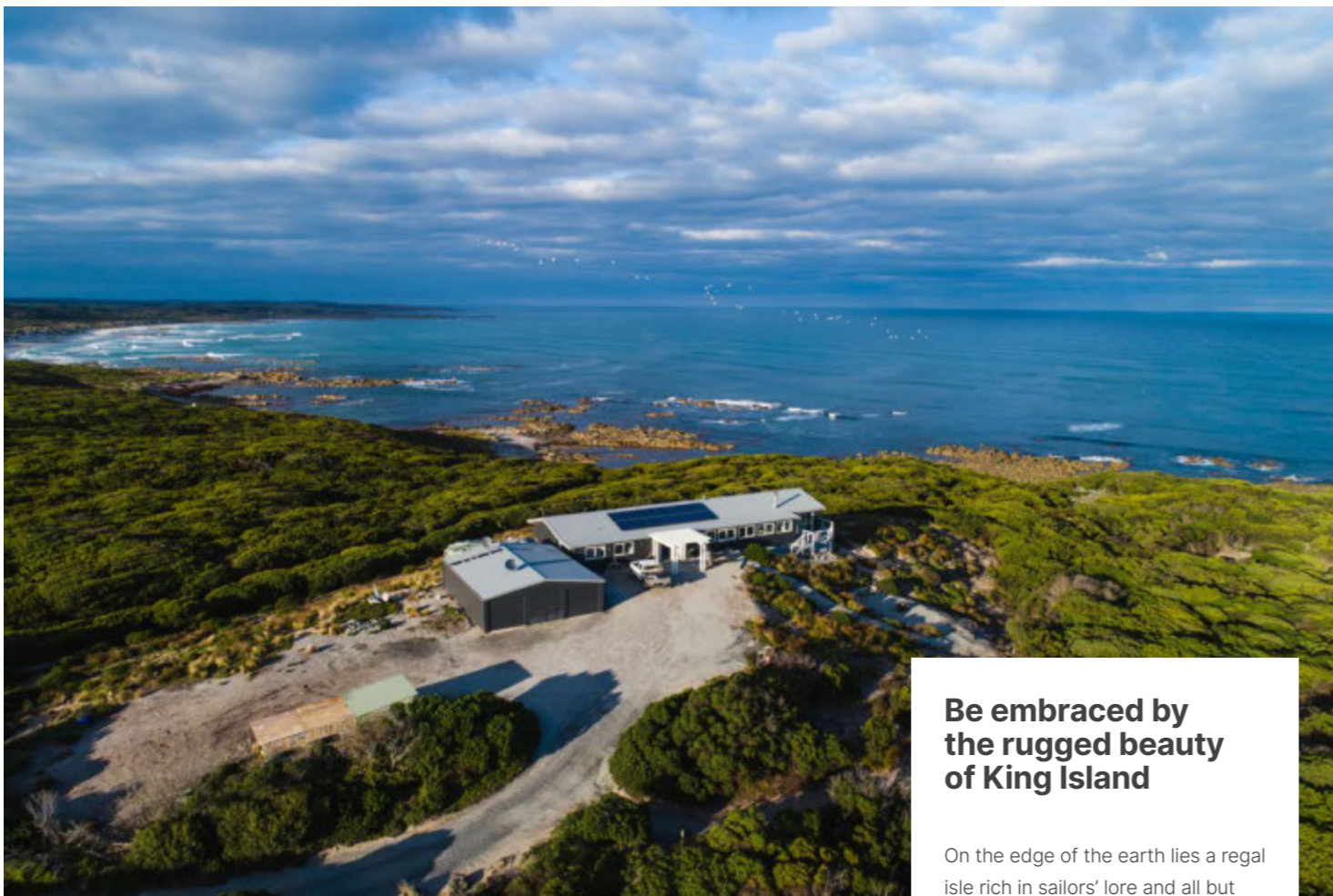
Bass Lodge (formerly Taraki Lodge) is just 15 minutes drive from the main township of Currie. Touching down at the King Island Domestic Airport (KNS), a ten minute drive will have you entering the gates of Bass Lodge, surrounded by uninterrupted bass strait views, rugged bushes and vegetation.

This is modern coastal luxury at its best. Bass Lodge offers up to eight guests the opportunity to relax in total privacy and share precious time with a loved ones, whilst indulging on King Island's famous local produce and embracing the endless spectacular vistas. The four beautifully appointed bedrooms feature king beds (or eight long singles) and four ensuites, providing versatility for groups and families.

Set amongst a stunning natural backdrop of Bass Strait, Bass Lodge King Island showcases this blue vista through floor-to-ceiling glass.

Unwind and immerse yourself in your beachfront environment with your private outdoor bespoke sauna and sunken timber hot tub. Indoors has been thoughtfully designed with relaxation in mind. Little details combine to create your sanctuary, with a fireplace, gourmet kitchen and bespoke touches that provide the highest standard of luxury accommodation on King Island.



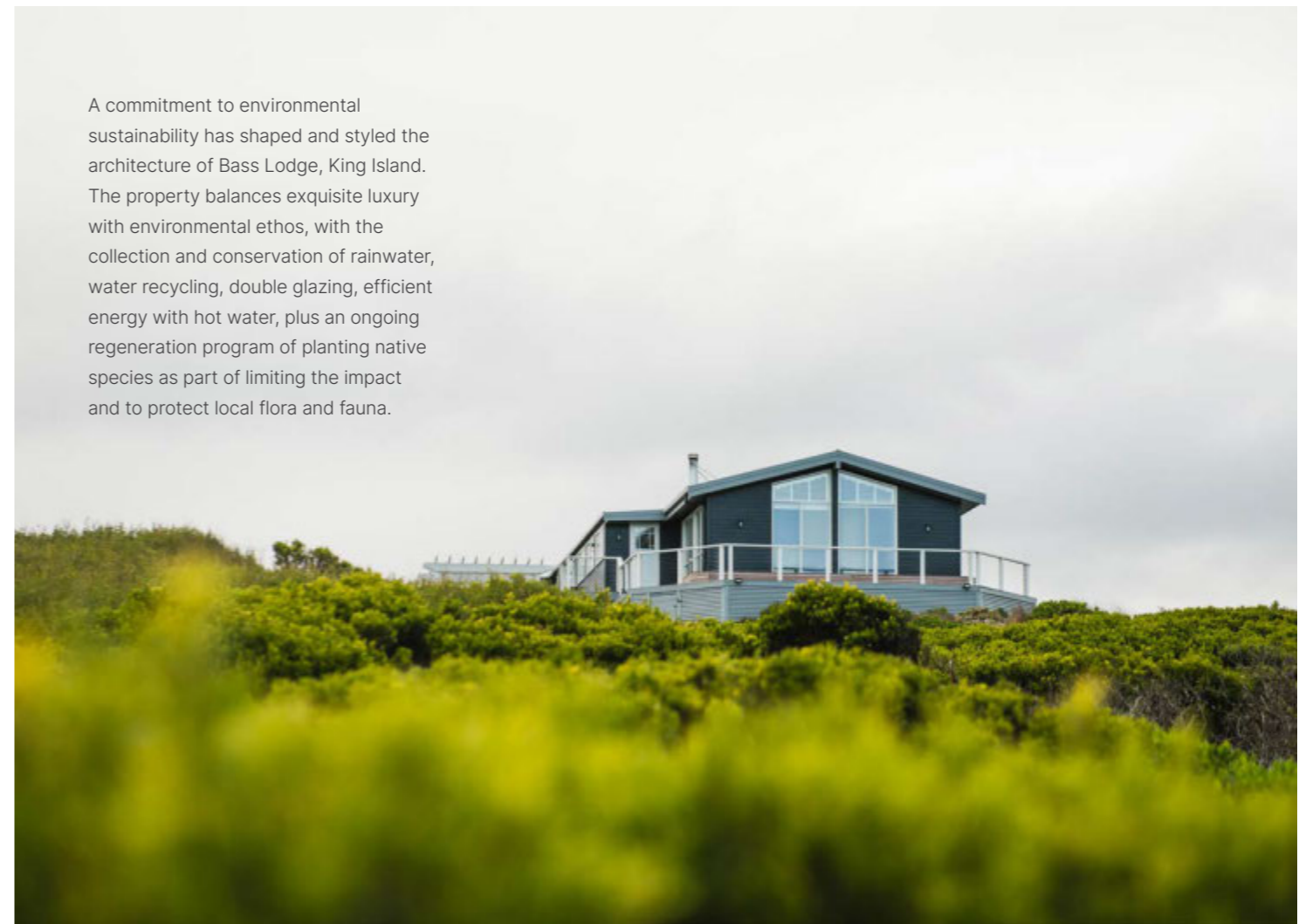
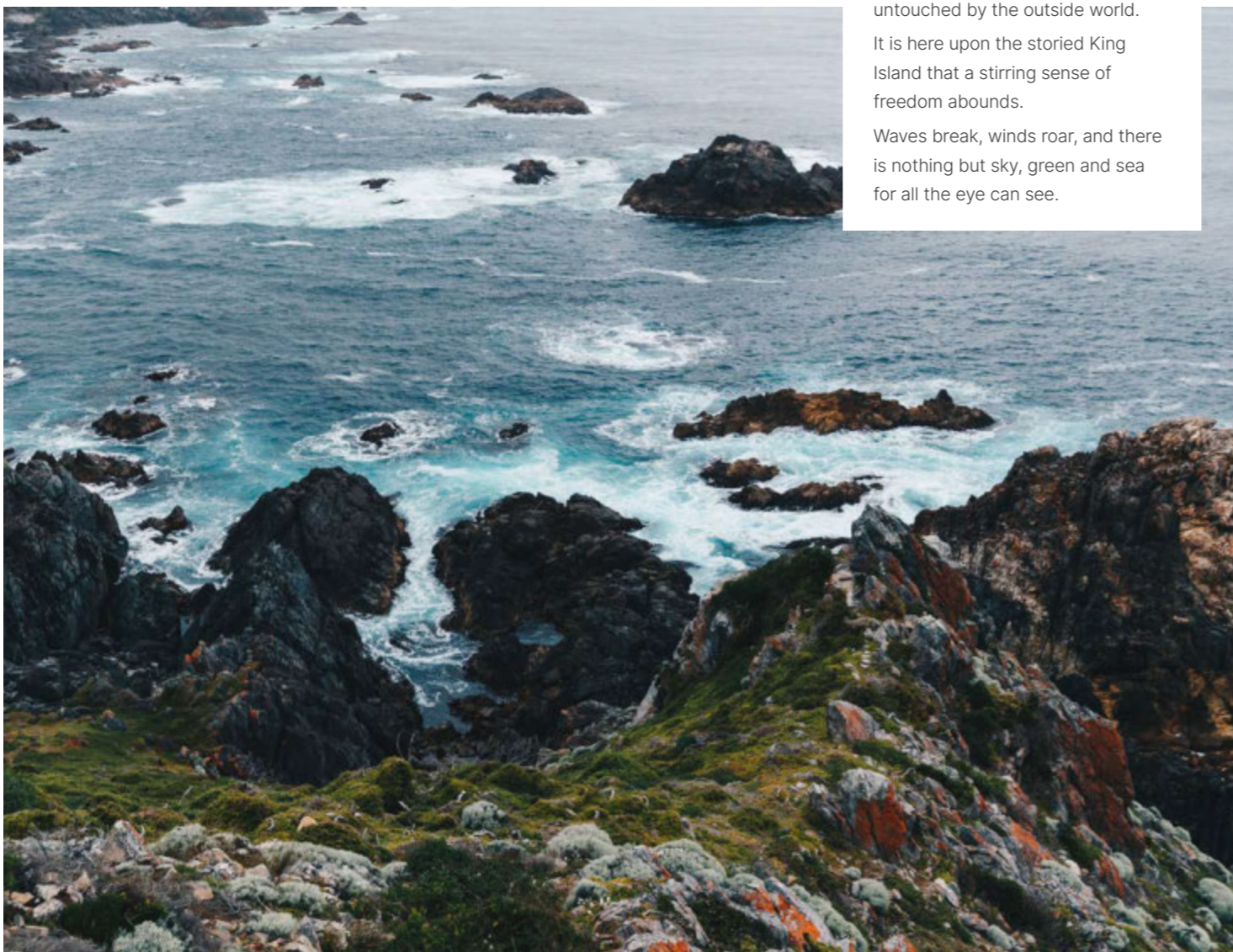


Be embraced by the rugged beauty of King Island

On the edge of the earth lies a regal isle rich in sailors' lore and all but untouched by the outside world.

It is here upon the storied King Island that a stirring sense of freedom abounds.

Waves break, winds roar, and there is nothing but sky, green and sea for all the eye can see.



A commitment to environmental sustainability has shaped and styled the architecture of Bass Lodge, King Island. The property balances exquisite luxury with environmental ethos, with the collection and conservation of rainwater, water recycling, double glazing, efficient energy with hot water, plus an ongoing regeneration program of planting native species as part of limiting the impact and to protect local flora and fauna.

A community-run museum displaying the cultural and natural history of the Furneaux Islands



OPENING HOURS
 1 May – 24 December
 Sat & Sun 1.00pm – 4.00pm
 26 December – 30 April
 Tues to Sun 1.00pm – 5.00pm
 Closed Mondays & Good Friday

Visit us at 8 Fowlers Road, Emita, Flinders Island
 Phone: 03 6359 8434 Email: furneauxmuseum@gmail.com



“The transition to Howell Property Group in January this year is an opportunity for me to enhance the real estate service offering on Flinders Island and bring an increased level of professionalism.

Michelle Hirschfeld

**EMBRACE THE
CHANGE, APPRECIATE
THE CHALLENGE**

Trousers Point Beach
Loccota, Flinders Island, Tasmania

Michelle started offering real estate services in October of 2018, after a proactive approach to consider a career as a property representative on Flinders Island.

After a 13 year break from a professional background as a corporate client relationship manager within the telecommunications sector, followed by running a family owned business in Victoria, then making a life changing move to Flinders Island to farm beef in 2011, Michelle was very open to re-visiting her client relationship skill-set. Acknowledging she could refine those skills, she decided she indeed could meet all of the principles associated within the real estate industry, and gave a resounding yes.

“To be able to establish, nurture and support meaningful client relationships is something I’ve always prided myself on,” she says.

“Open transparent communication and simply following through with doing what you say you will do, has served me very well over many years. I’ve set the professional bar for myself quite high, since embarking on the real estate journey.

Actively buying or selling real estate as most know from personal experience, can be a very stressful time. It’s absolutely life changing for people from that very first thought of ‘I’d like to move here or maybe we should sell, who can we talk to? What are the steps involved? What is our property worth? What are the logistics? Just how difficult is this likely to be?’

For me personally, the job satisfaction in all of this comes from helping make the process as simple as possible. I take so much pride in giving my time, my attention to detail, explaining the sales process thoroughly and completely.

I feel extremely humbled to be able to offer a service where I am actively participating with a positive contribution to helping folks take that next big step on life’s journey. It’s a responsibility I take very seriously and a very rewarding day to day experience. I do get very excited for both my vendor’s and my buyer clients and often find myself very emotionally attached to each property transaction. I make a lot of personal connections in this role. It so much more than just a job to me on both a personal and a community level.

Flinders Island is so very unique, offers such a wonderful lifestyle – we will never leave! My partner and I often reflect on our lives

INTRODUCING MICHELLE HIRCHFIELD



Bluff Walking Trail - Parrys Bay
Whitemark, Flinders Island, Tasmania

here and truly feel that we have found our place in the world, a life we don't need a holiday from, a sense of belonging.

It's not for everyone I understand and nor should it be in all honesty. It has its ups and downs, has its challenges, maybe more so at times due to the geographic location, but that's part of what I actually love about it! I think those who have chosen Flinders to be their home or those who were born here, have stayed or returned, are some of the most resilient people you'll ever meet.

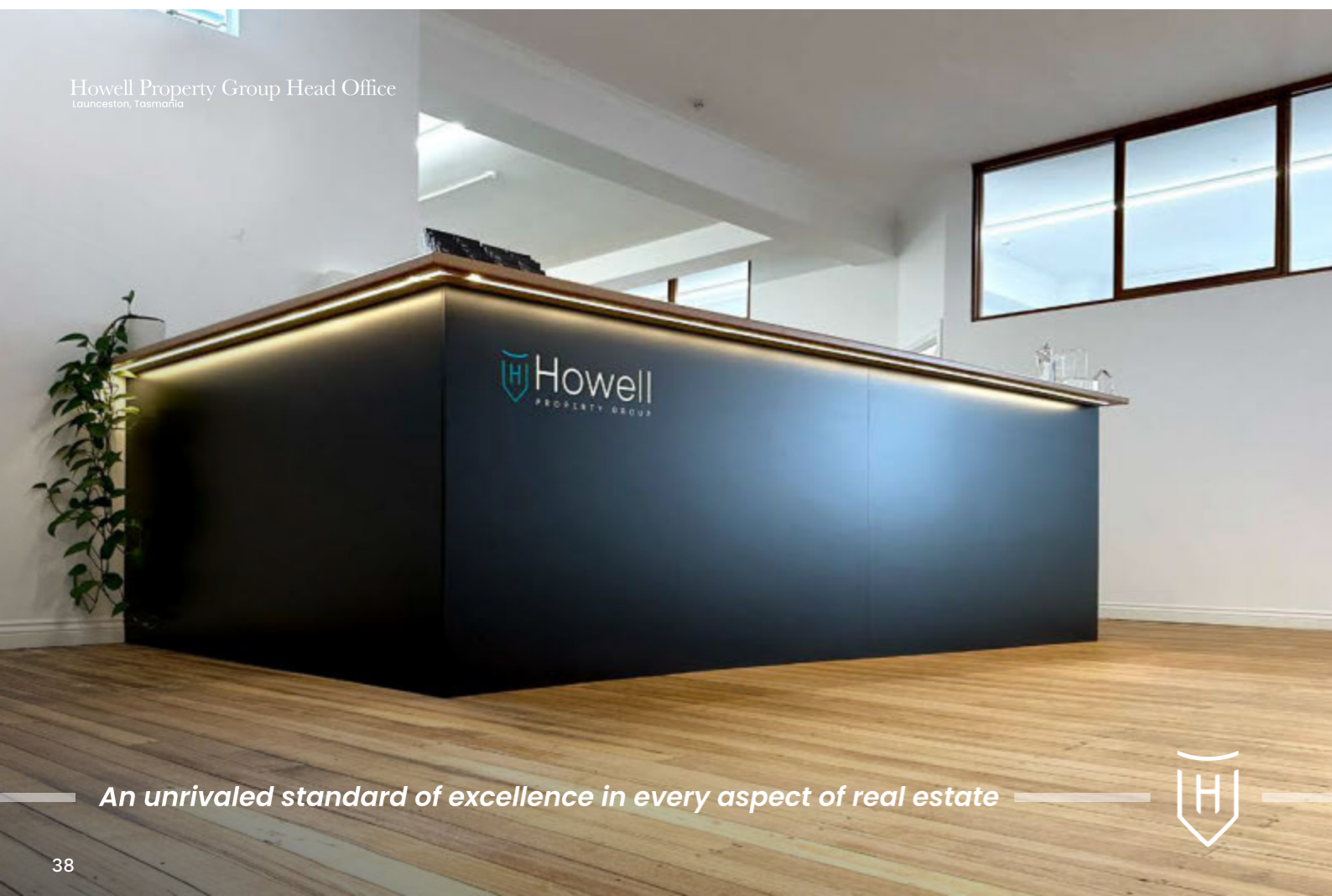
We have to pull together as a community however possible, support each other as best we can and be the ultimate problem solvers individually and as a community and believe me, the challenges are so worth it!

The transition to **Howell Property Group** in January this year is an opportunity for me to enhance the service offering on Flinders Island and bring an increased level of



Howell Property Group | howellpropertygroup

Howell Property Group Head Office
Launceston, Tasmania



An unrivaled standard of excellence in every aspect of real estate



professionalism. HPG have a wonderful mix of very dedicated people with a strong commercial property team, rural and residential specialists, property management specialists and dedicated in house marketing and administration professionals.

This company aims to go beyond, to exceed expectations with positivity and personal attention with a prompt, highly accommodating, diligent, results driven focus. Those core values align extremely closely with my own belief systems surrounding unrivaled customer service and I feel very honoured to have been invited to become part of their growing legacy in Tasmania."

Michelle Hirschfield
Property Representative
0488 719 984 | michelle@howellpg.com.au

03 6310 8320
Level 2/97A York St Launceston
howellpg.com.au



The Flinders Wharf
Whitemark, Flinders Island, Tasmania

WING'S WILD~ LIFE PARK

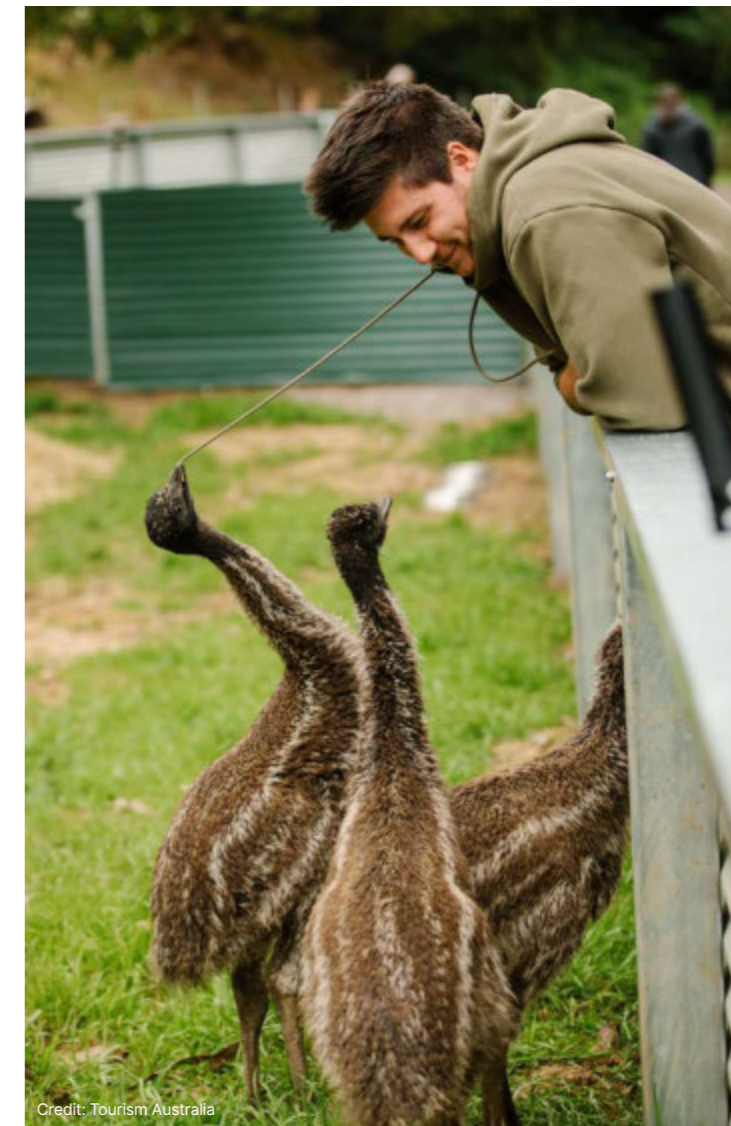


Welcome to Wing's Wildlife Park

At our family owned multi award winning wildlife park you can explore and get up close with our wildlife. See over 150 different species!! Get amongst our Australian native wildlife, be amazed by our birds of prey, frolic with the farm animals, mingle with the meerkats, and marmoset monkeys, throw some pellets to the fish, smile with the reptiles.

Hear our unique story consisting of seven generations living and farming within the Gunns Plains community. Colin and Megan Wing are the fifth generation, founding the park in 1986. Today we offer the largest wildlife/animal park with onsite accommodation and display the largest collection of Tasmanian wildlife in Australia. Wing's Wildlife Park is the only park to have imported American bison into Tasmania.

Make and share memorable moments with friends & family while enjoying one of our many hands-on encounters or guided tour options.



Credit: Tourism Australia



Credit: Tourism Australia



Credit: Tourism Australia



Credit: Tourism Australia



Credit: Tourism Australia

We offer numerous wildlife presentations throughout the day which are included in your admission price.

Once you are done, sit and relax in our café with a hot drink or enjoy a delicious meal created by one of our chefs. We have gluten free and vegan options available.

If you feel that a day isn't enough to enjoy all that we have to offer, you can always sleep over as we have accommodation units, powered sites, campsites with toilet, shower and laundry facilities available.

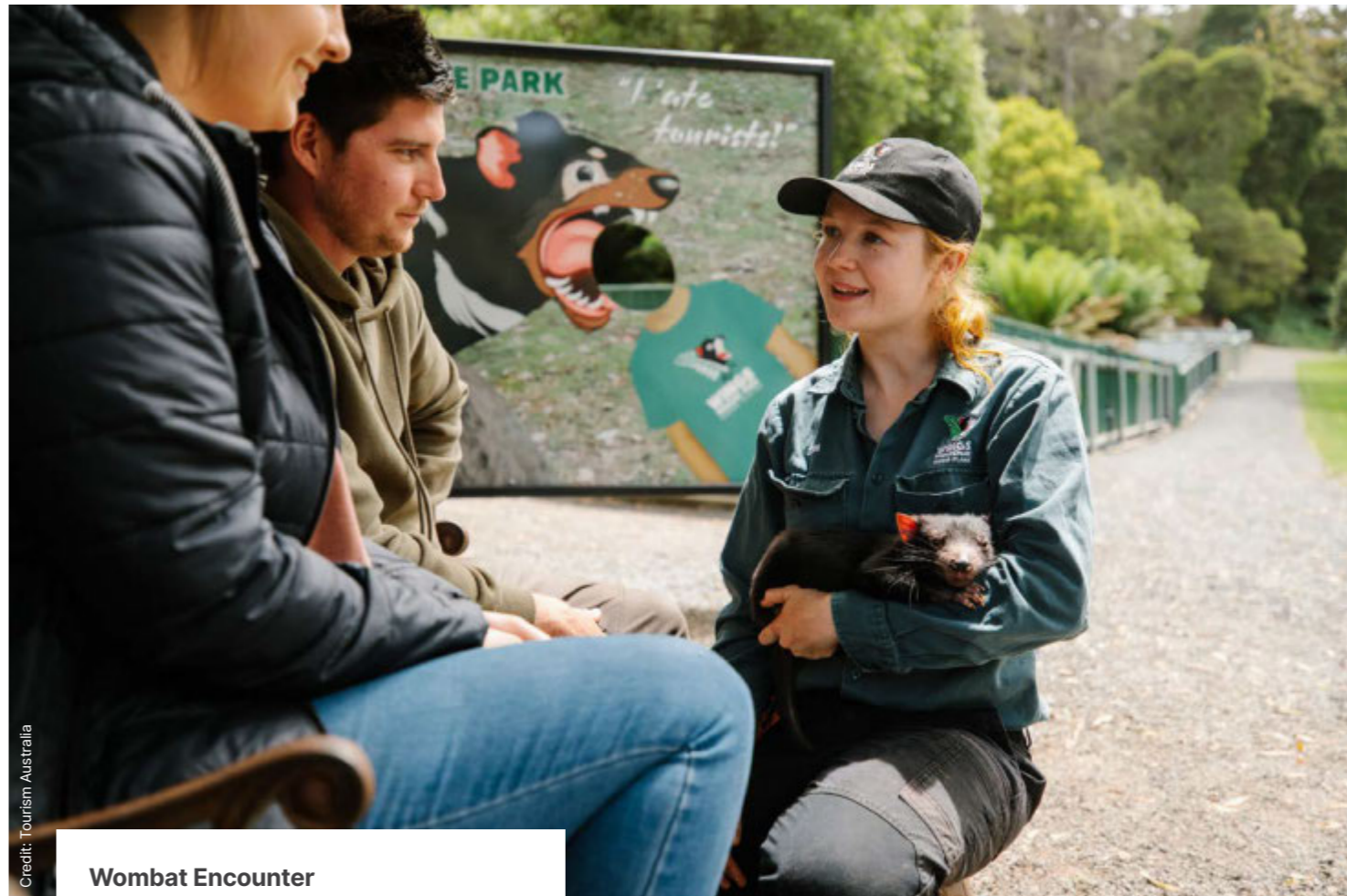
Accommodation

Camping

Wing's Wildlife Park provides camping opportunities that will meet the needs of all campers, regardless of how diverse those needs may be. Park your van along the expansive river flats of the Leven River is something truly special as you know you can only do this during the warmer months when the flats are accessible making this experience even more unique. Or head further into the park and hook up to a powered site and enjoy the comforts of home whilst overlooking the wildlife park. Each option provides you with access with the Farm Walk and a single payment to the wildlife park allows you entry to the park as often as you like during your stay.



Credit: Tourism Australia



Credit: Tourism Australia

Wombat Encounter

Meet and Greet Roxy the Wombat

You may have seen wombats out and about on your travels around Tasmania – how about experiencing one up close at Wing's Wildlife Park? During your wombat encounter you will be able to pat, touch and take numerous photos with Roxy. This experience will last for approximately 10 minutes so take the opportunity to ask as many questions as you like.

Wombat Encounter \$60 per person (minimum age 5)

Koala Encounter

Meet and greet Blinky the Koala

Blinky is one of only two Koala's in Tasmania so you are very lucky to be able to see him today. During your encounter today you will be able to pat Blinky and take numerous pictures with him. This amazing experience will last for approximately 15 minutes and you may ask as many questions as you like.

Koala Encounter \$60 (minimum age 6)



Credit: Tourism Australia

Stables Accommodation

The **Stables** Accommodation offers a range of units that can cater for a couple looking to get away for a night to a family gathering or group of friends of up to 35 people getting together to celebrate a special event. There are 15 rooms in **The Stables** with a range of beds in the rooms including queen beds only, queen beds and bunk beds, and several rooms with one or two sets of bunks beds so you can design your sleeping arrangements to suit your own requirements. The units are supported with shared amenities, and shared kitchen and recreation space. Staying in **The Stables** provides you with access to the Farm Walk and a single payment to the wildlife park allows you entry to the park as often as you like during your stay.

Plan your trip

Planning a camping trip along the north west coast of Tasmania, want to include a wildlife park in your *to do* list? You will need at least 2 hours for a leisurely visit, but we recommend staying longer to get a greater wildlife experience. Good planning can make your visit more enjoyable, whether you come for the day or come to stay, so don't forget to check on our feeding and interaction times with some of our wildlife so that you don't miss out on these opportunities.

Accommodation Terms of Use

- Checkout Times:
11 am for powered sites and units
3pm for non-powered camp sites
- No pets allowed.
- You must have attained 18 years of age to book accommodation.
- Motor bikes not allowed (except for transport to site).
- No parties - this is a family park.
- Remove all your rubbish, and leave the site clean.

- Always be considerate of other campers.
- Children should be watched at all times and not left unattended, especially when near the river.
- It is a condition of a guest occupancy that the owners of the premises will not be liable for damage to or loss of property brought into the premises by the occupier or their guests.

If you arrive at the park between 10am and 4pm, please register and pay at reception. If you arrive after hours, payment will be collected from you at the camping grounds.

Clothing and Footwear

- Comfortable footwear is always recommended for your visit to Wings Wildlife Park. There is so much to look at here that you might be on your feet for hours! In winter, or when we have had a lot of rain, boots are recommended as some heavy use areas such as the kangaroo enclosure can become muddy.
- If there's a chance of rain, pack your coat or umbrella, maybe even a change of clothes for the kids. We usually have the fire going when it's cold, but you don't want to be sitting in wet clothes for the drive home.
- Summer days can be hot here too, so don't forget sunscreen and hats.

Photo Opportunities

- There are many photo opportunities here, such as the devil-feeding display, koala session, feeding the kangaroos, and so much more, so don't forget your camera.
- Make sure your camera is fully charged. If you're staying for a few days, you might need to bring your charger. Spare batteries and cards could come in handy too.
- Some of our animals are very active, so they are ideally suited to videos. Why not bring your video camera too?

Food

- We have a cafe on site, so you can choose from our range of meals and snacks, hot and cold drinks during opening hours.
- Picnic facilities are available, so you can bring your own food to eat on the veranda or picnic benches on the lawn.
- You are welcome to bring your own gas barbeque.
- Catering is available for parties and groups. Just give us a ring or send us an email and let us know your requirements beforehand. The undercover **Devil's Den** area can be booked so that you have your own enclosed space.

Gift Shop

- Don't forget to check our range of souvenirs. You are sure to find something for family, friends or the neighbour looking after your pets. There is a range of soft toys, clothing, books and other novelty items to suit all ages.
- Food for the kangaroos and grass-eating animals can be purchased. Our gentle kangaroos are used to people and will eat straight out of your hands. Tubs of fish food are available too - see the look on your kid's face as the trout jump for their food. The undercover **Devil's Den** area can be booked so that you have your own enclosed space. Staying Over We have no TV reception and limited mobile reception.
- Access to our large animal walk is included in the cost of your accommodation, whether you're staying in a backpacker unit or camping. This area stays open all the time, so you can wander around and see the bison, buffalo, camels, ostrich, emu, alpacas, ducks, geese, emu and other farm animals any time of the day.



- Nocturnal tours are available during the winter months. We have nocturnal animals that sleep during the day and become active at night. This tour includes an interactive, hands-on, exciting experience.
- Finish the night off with a muffin and hot drink by the fire. Bookings essential. The cost of your nocturnal tour will also cover you for entry into the wildlife park on all subsequent days of your stay.
- The Leven River runs through the wildlife park. This is a great place to fish in season. You need your own permit, rods and bait. Catches can include trout, blackfish and eels.
- Other activities such as kayaking and swimming in the river can be great fun too. Kids will always need to be watched closely near water, so be safe while you're having fun.
- The Penguin-Cradle walking track passes nearby. Wings Wildlife Park is often used as a stop-over on this 6 day walk. There are also short walks at the rear of the wildlife park into the Dial Range, so put on your walking-boots and go for a hike or a short stroll.
- Bring some books to read or board games for the family for old-fashioned entertainment that is still enjoyable.

Suggested Itinerary

Whether you come for the day or come to stay, there are lots of options of other things to do in Gunns Plains. Here are a few ideas for making the most of your time:

- **Gunns Plains Caves**
Just a 5 minute drive from Wing's Wildlife Park. Discover the magic hidden beneath the picturesque farmland of Gunns Plains - a fascinating world of limestone formations, glow worms, cave spiders, sinkholes and underground streams. Daily tour times are 10am, 11am, 12pm, 1.30pm, 2.30pm and 3.30pm.

- **Preston Falls**
Just a 10 minute drive, then a 5 minute walk, from Wing's Wildlife Park. Particularly spectacular after rain, but worth a look at any time of the year, this delightful 25m waterfall plunges into the shady depths of a gorge and is surrounded by blackwood forest.
- **Leven Canyon**
Explore the Leven Canyon, just a 20 minute drive from Wing's Wildlife Park. Once there, enjoy a 20 minute return walk to Cruickshanks Lookout.
- **Kaydale Lodge Gardens**
Visit their magnificent 2ha cool climate garden which changes through the seasons. Homemade afternoon tea and light lunches available.
- **Leven Valley Vineyard**
Just a 10 minute drive from Wing's Wildlife Park, situated on a north-facing hill overlooking picturesque Gunns Plains. The cellar door offers samples of estate grown Pinot Noir and Chardonnay. Open Wednesday to Sunday between September and May 11 am to 5pm.
- **Pedal Buggies**
Situated in the coastal town of Ulverstone, just a 20 minute drive from Wing's Wildlife Park. Laugh as you experience this all aged, fun with a difference, activity as you ride through some of Ulverstone's lovely parks.
- **Leven River Cruises**
Also situated in Ulverstone, Leven River Cruises provides personalised customer cruises of the Leven River. Enjoy & relax in its natural scenic sanctuary and be enthralled with an interpretation of its historic cultural twist.

More information - wingswildlifepark.com.au



Credit: Tourism Australia

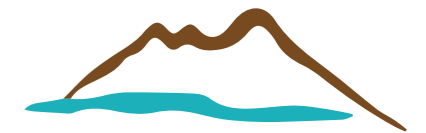
ABSOLUTE BEACHFRONT SHACKS ON FARMLAND LOCATED CENTRAL TO EVERYTHING FLINDERS ISLAND HAS TO OFFER.

ENJOY OUR MODERN INTERPRETATION OF THE CLASSIC TASSIE BEACH SHACK HOLIDAY ON THE INCREDIBLE SAWYERS BAY WITH ITS MASSIVE GRANITE BOULDERS AND SHELTERED SANDY COVES.

OUR SHACKS ARE JUST A HUNDRED STEPS FROM THE WATER WITH EXPANSIVE VIEWS ACROSS BASS STRAIT TO THE OUTER ISLANDS.



PLANNING ON RETURNING TO FLINDERS ISLAND? CONTACT US DIRECTLY FOR SPECIAL RATES AND OFFLINE SPECIALS.



sawyers bay shacks

🌐 www.sawyersbayshacks.com

✉ clem@sawyersbayshacks.com

📞 0411 255 179





MELBOURNE DESIGN WEEK 2024

DESIGN THE WORLD YOU WANT

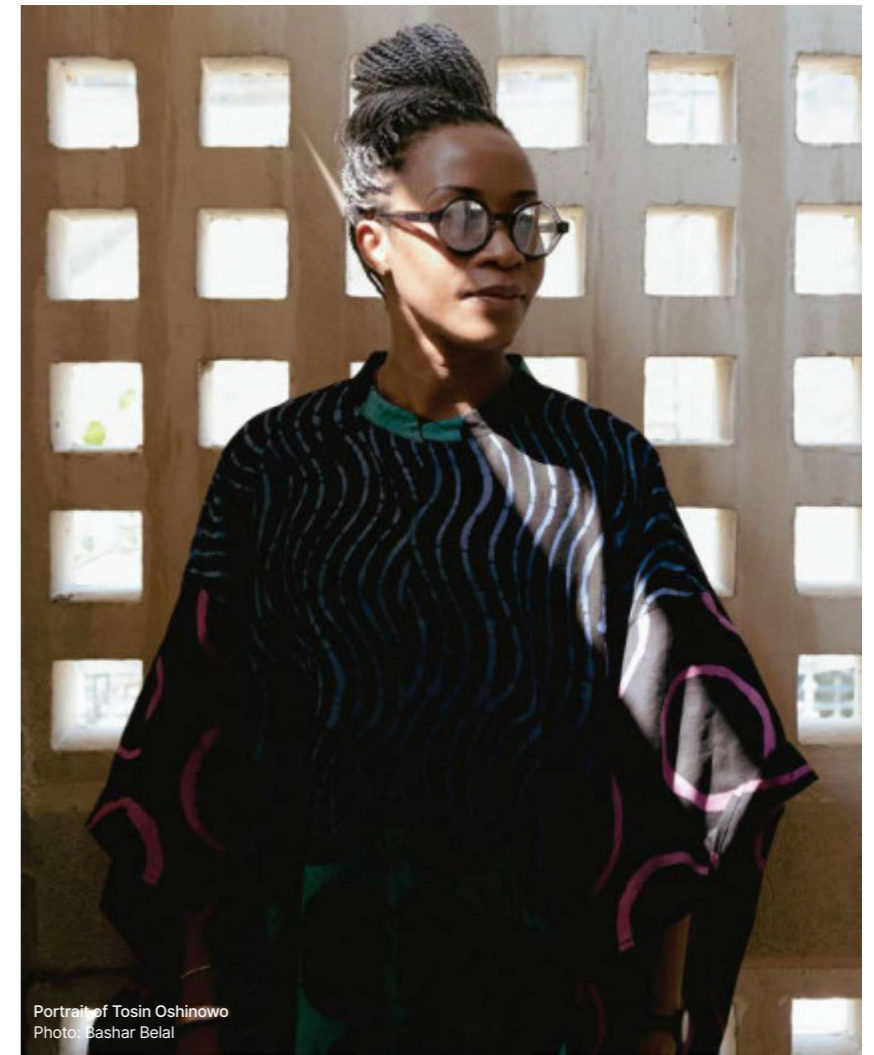
NGV International and venues across Victoria | 23 May – 2 June 2024

Melbourne Design Week, 23 May – 2 June, Australia's largest and leading annual design festival presents its eighth edition in 2024 with 11 days of 300+ innovative exhibitions, displays, symposiums and talks throughout metropolitan Melbourne and regional Victoria. Highlights in the 2024 program include a keynote from Nigerian architect **Tosin Oshinowo**, a symposium exploring speculative riverside designs for the Birrarung, the tenth year of Melbourne Art Book Fair, plus presentations of work by **Visnja Brdar**, **Jessie French**, **Sruli Recht** and **Ross Gardam**.

Exploring the theme of 'Design the world you want', the 2024 program brings into focus the use of **energy**, **ethics** and **ecology** to encourage positive change, reimagine existing systems and offer innovative design solutions to complex global challenges. 'Energy' examines how design can champion new technologies to enact society's transition to renewables; 'ethics' demonstrates how design can be guided by societal values; and 'ecology' invites designers to respond to the physical environment and considering the influence of nature. Presented by Creative Victoria and delivered by the National Gallery of Victoria (NGV), Melbourne Design Week is a vital platform for emerging and established creative practitioners, offering the Australian design community and audiences the opportunity to engage with a diverse program of talks, tours, exhibitions, installations, and workshops.

Program highlights at the NGV include:

- A keynote talk by Nigerian architect **Tosin Oshinowo**, sharing insights into her socially responsive approaches to urbanism. Following the success of her curation of the recent Sharjah Architecture Triennial, Oshinowo will discuss architecture and urbanism in the Middle East, Africa and Asia to rethink approaches to design and architecture that can meet cultural and climatic needs in the twenty-first century.



Portrait of Tosin Oshinowo
Photo: Bashar Belal

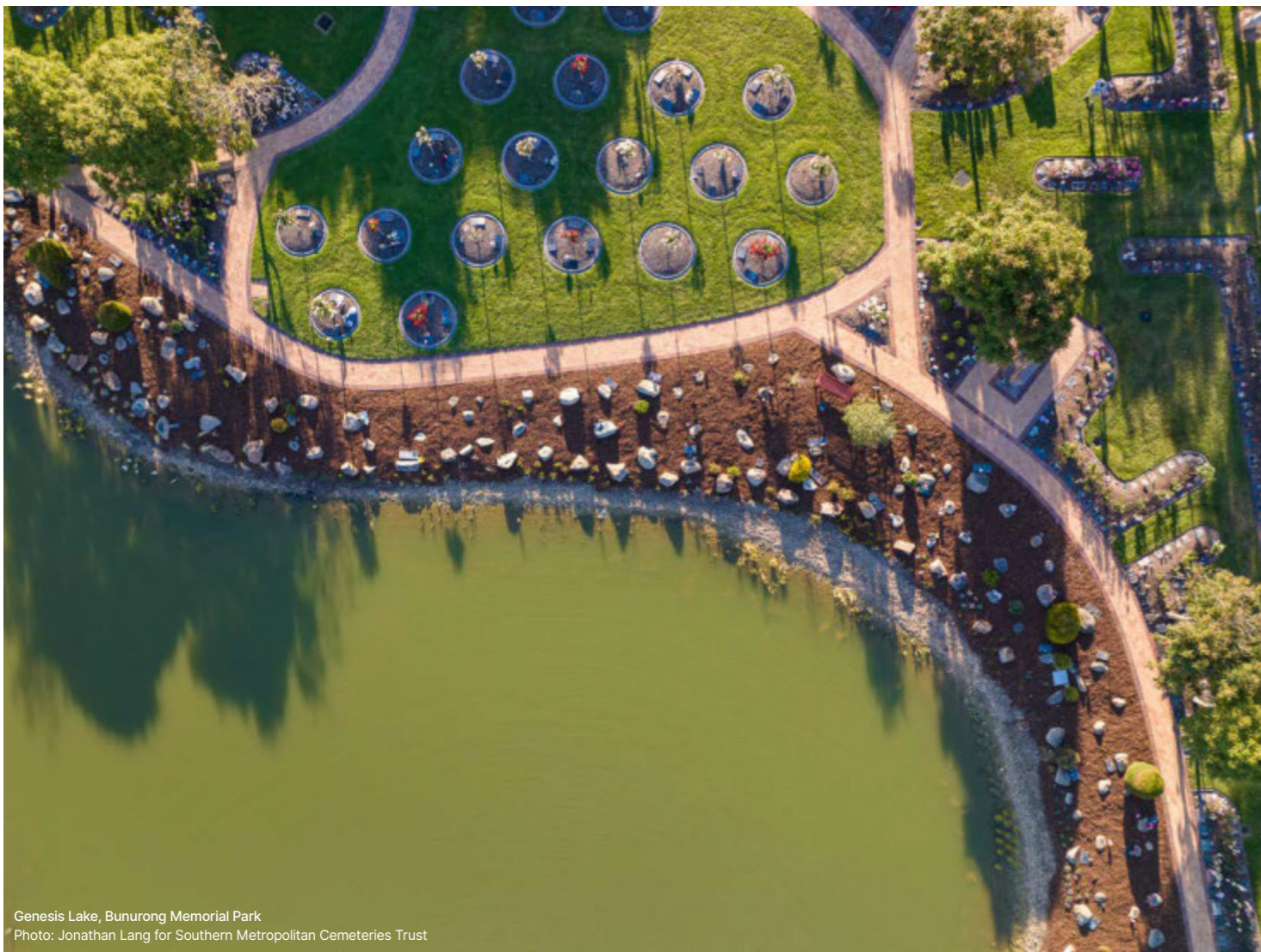
About Melbourne Design Week

An initiative of the Victorian Government through Creative Victoria, and delivered by the National Gallery of Victoria, Melbourne Design Week celebrates design in an annual 11-day program of talks, tours, exhibitions, launches, installations, and workshops across Australia's design capital. The curation of the program is led by the NGV Department of Contemporary Design and Architecture team: Ewan McEoin, Simone LeAmon, Gemma Savio and Dr Timothy Moore. Melbourne Design Week has evolved since its inception from 100 exhibitions and events in 2017 to more than 350 in 2023. In 2023, Melbourne Design Week was enjoyed by over 70,000 people which cemented it as Australia's leading design event.

About the National Gallery of Victoria

Founded in 1861, the National Gallery of Victoria (NGV) is the most visited and oldest public art institution in Australia.

The organisation currently spans across two venues NGV International on St Kilda Road and The Ian Potter Centre. NGV Australia at Fed Square. Once completed, The Fox: NGV Contemporary, will form the third site for the organisation, enabling the NGV to present significant works of contemporary art and design.



Genesis Lake, Bunurong Memorial Park
Photo: Jonathan Lang for Southern Metropolitan Cemeteries Trust

- A public symposium held in anticipation of the upcoming NGV exhibition **Reimagining Birrarung: Design Concepts for 2070**, which challenges eight leading Australian landscape architects to develop radical speculative designs that reinvent sites along Birrarung (the Yarra River) opening at The Ian Potter Centre: NGV Australia in August 2024.
- As part of **Melbourne Art Book Fair's** tenth year, UK-based **Katy Hessel**, esteemed curator, art historian and author of *The Story of Art Without Men*, presents a talk in partnership with The Wheeler Centre. Melbourne Art Book Fair's 2024 program includes artist and designer activations, workshops, plus the popular stallholder fair in the NGV's Great Hall on the opening weekend. The program also presents satellite events along



Melbourne Art Book Fair 2022 in the NGV Great Hall
Photo: Tobias Titz



Portrait of Christine Checinska
Photo: Michael Kayvan Bazergan

Victoria's surf coast with programming in Geelong, Barwon Heads, Torquay and Ocean Grove, adding to events in Ballarat and Castlemaine.

- A keynote talk from the Victoria and Albert Museum's Senior Curator of Africa and Diaspora Textiles and Fashion, **Dr Christine Checinska**, accompanied by a diverse range of public programs curated by Africa Fashion Program Co-Curator Dorcas Maphakela, will highlight the diverse and varied fashion culture of the African continent in celebration of *Africa Fashion*. The exhibition, opening at NGV International in May, celebrates the creativity, innovation and indelible global impact of African fashions from the mid-twentieth century to the present day.
- Following a recent think tank on Country in Arnhem Land, NGV and **Agency Projects** present a thought-provoking conversation, **Rubbish on the Shore** to examine the intersection of culture, creativity and sustainability, investigating design solutions for ocean and river debris affecting communities across Australia.



Collective debris Djuiban | See Shepherd Australia.
Photo: Rebecca Griffiths.

The Dream, or: the view from here is both bleak and resplendent 2022
Credit: Ashley Eriksmoen



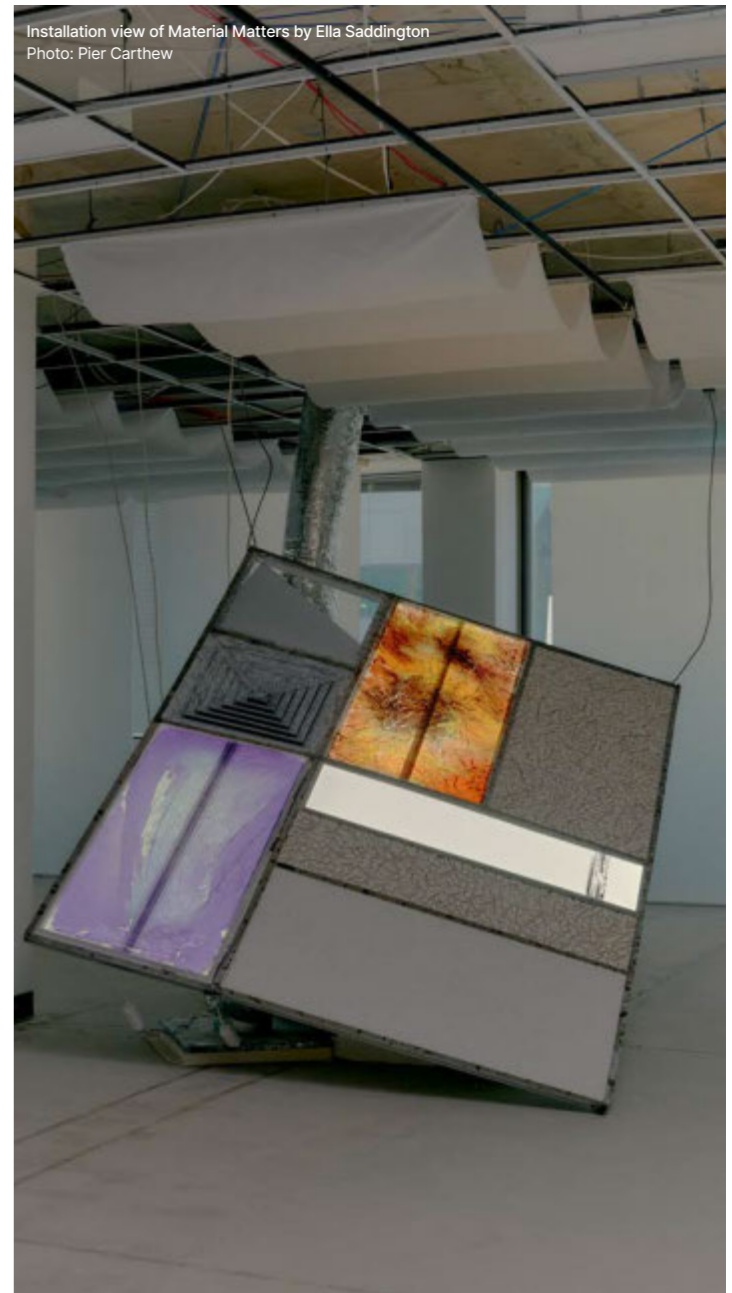
Cricket protein choc raspberry brownie with candies cricket topper, supplied by Circle Harvest for the Telstra Creativity and Innovation
Photo: Cormac Hanrahan



Aesop in collaboration with OTHER MATTER
Photo: Ben Alcaraz



Installation view of Material Matters by Ella Saddington
Photo: Pier Carthew



Satellite program **Design and Death**, shines a light on the architecture, places, issues and practices associated with the end of life. Presented by **Open House Melbourne**, the series of talks and tours – including a tour of Bunurong Memorial Park – explores the relationship between design and death to discover how the spaces we associate with death and burial can provoke more thought about life and how we live it.

For the fifth year, Mercedes-Benz Australia will present the Annual **Melbourne Design Week Award**, offered for an outstanding contribution to Australia's largest international design event. The winner will be announced on the opening night of Melbourne Design Week 2024. NGV and Stylecraft will announce the winner of the **Australian Furniture Design Awards** on the eve of Melbourne Design Week, which will be accompanied by an exhibition of the five shortlisted works at the Stylecraft showroom.

Melbourne Design Week Film Festival will present a series of films that explore the impact of architecture and design through the moving image and its power to affect change, innovate and shape community, cities and the environment.

Reflecting further on how good design impacts our everyday lives, design studio **Never Too Small** presents **Multi-Functional Pet Furniture** which conceptualises furniture that combines pet-housing, aesthetics and affordability. Other program highlights include **Urban Landscape Design Cake Competition** where Melbourne-based landscape architecture studios have selected an under-development site in the city and re-imagined it as parkland through the edible medium of cake.



Installation view of (NO THINGS) MATTERS
Photo: Alice Hutchinson

Galleries and design curators will present a series of exhibitions highlighting the inspiring scope of Australian designers with displays at Craft, Tarrawarra Museum of Art, Tolarno, MUMA, Pieces of Eight, Useful Objects, and more. Australia's leading showrooms, brands and design studios will also participate with exhibitions taking place at venues including Aesop, Brickworks, Cult, Spacecraft, Tait, Living Edge, Mobilia, Christopher Boots and House Editions. Speculative design exhibitions and programs examine approaches to sustainability and design solutions for the future. Designer Ella Saddington presents **Material Matters** which consider the longevity and sustainability materials that surround us, while the exhibition **MATTERS** explores the themes of process, community and longevity from designers including Adam Goodrum, Dean Norton, Jordan Fleming, and Marlo Lyda. Plus, programs delivered by **City of Melbourne**, **BAR Studio** and **Plus Architecture** explore the environmental benefits of adaptive re-use and repurposed buildings.

Further program highlights include mixed-cultural First Nations designer **Lisa Waup** exhibiting a suite of commercial textile and wallpaper designs in an installation presented with **Willie Weston** and **Agency Projects**. **Revival Projects** has salvaged five large Cypress Macrocarpa trees from Box Hill cemetery to create an exhibition of 100 timber urns that will decompose and give life to a new tree. **Zachary Frankel** will mentor young people in a series of workshops to build chairs using waste material which will be exhibited during Melbourne Design Week.

The **Telstra Creativity Innovation Series: Future of Food** builds on the inaugural event in 2023 which presented unique, speculative and thought-provoking food. The second iteration in 2024 will continue to champion new approaches to food and waste exploring eco-innovation and potential solutions for environmental preservation.

Melbourne Design Week invites all Victorians to explore the city and state through regional hubs and independent exhibitions by leading designers. Melbourne Design Week engages venues throughout Victoria including the Victorian Pride Centre, Collingwood Yards, Melbourne School of

Design and Melbourne Museum with events also taking place in Bendigo, Ballarat, Geelong and Shepparton.

Tony Ellwood AM, Director, NGV, said: 'Since 2017, Melbourne Design Week has become an important event for design practitioners throughout the country, providing a crucial platform for their work and encouraging critical thought that will help shape the future. From commercial design objects to effective design solutions - the program of over 300 events showcases how Australia is leading design innovation globally.' Melbourne Design Week is an initiative of the Victorian Government through Creative Victoria and delivered by the NGV.

Melbourne Design Week takes place 23 May – 2 June 2024 at NGV International, St Kilda Road, Melbourne and at various locations throughout metropolitan and regional Victoria.

The full program and bookings will be available online from 11 April 2024. The majority of Melbourne Design Week is free to attend with some events requiring bookings due to venue capacities.

SHARP TRAVELLERS *Club*

Members will be the first to know of new flights, holiday packages, promotions competitions and exclusive offers.

- New look that is easier to navigate
- Ability to access all your bookings
- Ability to change & cancel bookings
- Book online using your credits
- Manage and change contact details
- Ability subscribe to receive news, offers and discounts

To join the travel club simply visit –
sharpairlines.com.au
or call our
**reservations team on
1300 55 66 94**

WHERE WE FLY CHOOSE YOUR DESTINATION



brought to you by Events Tasmania
Flinders Council, Furneaux Collective, Furneaux Community Arts

WILDERFEAST



WE INVITE YOU TO A CELEBRATION OF ART, MUSIC & FOOD
... A FEAST FOR YOUR SENSES ...

At the end of winter we'll be ready.... ready to get out... to be free of the long nights...
to feel the warmth of good company... to enjoy a feast... a wild feast...
to feel the music and welcome in the spring...

We'll welcome you to a feast of art, music & food at the Emita Hall
... a feast for your senses ...

SAT 17 AUG EMITA HALL

www.wilderfeast.com.au