

sharp

TRAVELLER

ACTIVITIES / DESTINATIONS / EVENTS



**KING ISLAND
SHOW 2024**

**MONA FOMA
2024**

**MOUNT WILLIAM
NATIONAL PARK**



WILDERNESS WEDDINGS

All-inclusive elopement & micro wedding packages for modern lovers.

Available all over Tasmania, including King, Flinders & Bruny Island.

WILDERNESSWEDDINGSTAS.COM



RESERVATIONS & ENQUIRIES

CALL 1300 55 66 94

sharpairlines.com.au

HEAD OFFICE

44 Gray Street
Hamilton Victoria 3300
T: 1300 55 66 94
E: reservations@sharpairlines.com.au

LIKE TO ADVERTISE?

Editorial & Advertising
Contact Heidi Jarvis
T: 0438 778 161
E: heidi@organisedsuccess.com

COVER IMAGE

Street Eats @ Franko Hobart
Mona Foma
by Moorilla Gallery

Welcome!

Holidaying in Tasmania during summer is one of the best times to travel. Whether you are an interstate visitor to King or Flinders Island or live on one of the pristine Bass Strait Islands and wish to get away for a short break, summer in Tasmania is magic. If you need inspiration, here are a few events that Sharp Airlines can take you to.

Hobart is the finish line for the world-famous Sydney to Hobart yacht race, which starts on Boxing Day. You can watch the yachts arrive while you enjoy a showcase of delicious local foods, produce, wine, beers and spirits at Tasmania's Taste of Summer, which starts on Wednesday, 27th of December 2023 through to Saturday 6th of January 2024.

The Festival of King Island (FOKI) is a locally run event in the heart of King Island's Currie Harbour. You can expect live music, surf, food and lots of family fun across the two-day festival between Friday 2nd of February and Saturday 3rd of February. We are proud to be sponsoring FOKI again for 2024 and helping festival organisers and music acts make their way to the island.

Flinders Island is looking forward to hosting its tenth year of the Furneaux Islands Festival in 2024. Held across three days between

Friday 19th of January to Sunday 21st of January, this festival offers a range of community events across various locations of Flinders Island, including the twilight market, makers and growers' market, live music at the 'Tav' and many other community events.

In a world more chaotic than ever, the festive season is a time for our family and friends, to reflect, and to give back to our communities. At Sharp Airlines, we are proud each year to support the communities in which we operate, namely our isolated Bass Strait Islands and their residents.

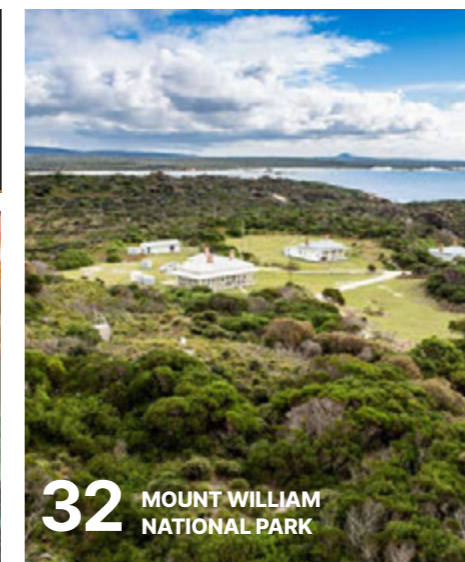
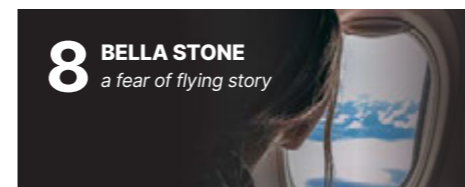
This time of year encourages many people to demonstrate thoughtfulness and kindness towards those who are less fortunate. Let's make sure this festive season brings out the best in all of us.

On behalf of the whole team at Sharp Airlines, I wish you and your families a happy and safe festive season and look forward to welcoming you aboard soon.



Malcolm Sharp
Managing Director/
Head of Flight Operations

In This Edition



The King Island Show is scheduled for Tuesday 5 March 2024 and if you have ever wanted to visit King Island, this is a fantastic opportunity to see the island and attend a grass roots, community show that may be small in size, but not small in charm or interest.



KING ISLAND SHOW 2024

By Narelle Blackie



This year the dedicated Show Committee is working on improving an already fantastic event, with a side show alley alongside the popular show attractions such as the traditional judging in the Pavilion.

Last year the Pavilion was the place to be as inclement weather threatened to negatively impact numbers attending. A testament to King Islanders the wind and the rain had nil effect on the gate takings. There are many and varied categories in which to enter in the Pavilion, such as the most unusual shell, largest and smallest leaf and the largest cuttlefish in the Preschool and Kindergarten section; and a myriad of other sections including: Birds, Honey, Dairy Produce and Eggs, Garden Produce, Flowers and Floral Art, Cooking, Preserves, Homemade Beverages, Knitting and Crochet, Needlework, Art, Handicraft and Novelty and Photography. There is also a dedicated Junior Competition within these sections and even a Citizen 70 year plus section.

Several novelty events have proved popular in recent years, namely the Whip Cracking, Dog Jumping, Boot Throwing and Macarena Dance Off. And of course, the Butch Brown Memorial Fun Run which involves 1 lap of the Racecourse, with or without shoes!

This coming show we will be hunting for the **toughest King Islander**. The prize money will be awarded to the islander who can stay in the ice bath the longest, so start practising.

The heart of King Island is our Beef and Agriculture. The Show Committee is passionate about encouraging the Island's youth to participate in proceedings, the introduction of a junior cattle judging section has proven popular with our junior farming folk.

The passion for beef is continued through the ages, as the highly competitive hoof to hook competition starts at the showgrounds and finishes at a carcass viewing BBQ later in the week.

If the idea of taking home some lamb for your freezer is enticing, then the public Live Lamb Auction is the attraction to attend. Participants can bid on a lamb, and then follow it through to the carcass competition to see how it sizes up.

In a world full of technology and oftentimes disconnection, it is heartening to know that there are still small, traditional country Australia events such as the King Island Show. Moreover, with all that is happening in the world right now, why not travel close to home and venture across Bass Strait to visit King Island, Tasmania. Sharp Airlines fly regularly from Tasmania and Melbourne into King Island. Why not book a flight and get prepared to enjoy our King Island Show, Tuesday 5 March 2024. 📍



Bella Stone

I have been flying with Sharp for well over 10 years now and within the last 6 years I have been on well over 50 flights, as I moved away from my home of King Island in 2018 to begin boarding school in Launceston. I am extremely lucky to have flown with Sharp as much as I have, but going on planes has never been easy for me. I have what some may call 'a fear of flying'. The most common response I get to this is, "well living on an island wouldn't help", and their right; it doesn't.

What has helped me fight this crippling fear however, is the kindness and compassion of the Sharp airlines pilots, specifically the now retired captain, Tony Jacobs. My sister Avalon introduced me to Tony after she became acquainted with the Sharp pilots from her job working at the King Island Airport café. Tony was kind enough to take me into the cockpit one afternoon, after Avalon mentioned how I have always struggled with pretty extreme plane anxiety and that I had a flight coming up that I was nervous about. Tony talked me through all the safety mechanisms and meanings of all the different noises which the plane would make, that would often trigger major anxiety for me. Not only Tony, but Neale and Kim Batey (Sharp airlines crew on King Island), always made sure I was sitting up the front and that if Tony was not flying, that the other pilots knew I was a very anxious flyer. Tony and the Sharp team would take the extra time before each flight to talk me through what to expect, such as if there was to be much turbulence. If I was unfortunate enough to be flying on a miserable King Island winters day, Tony would reassure me during my panicked state, that everything would be fine, as he needs to make it home to his cat for dinner. During flights, I distinctly remember Tony turning around and giving me the thumbs up after any bumpy patch, reinforcing to

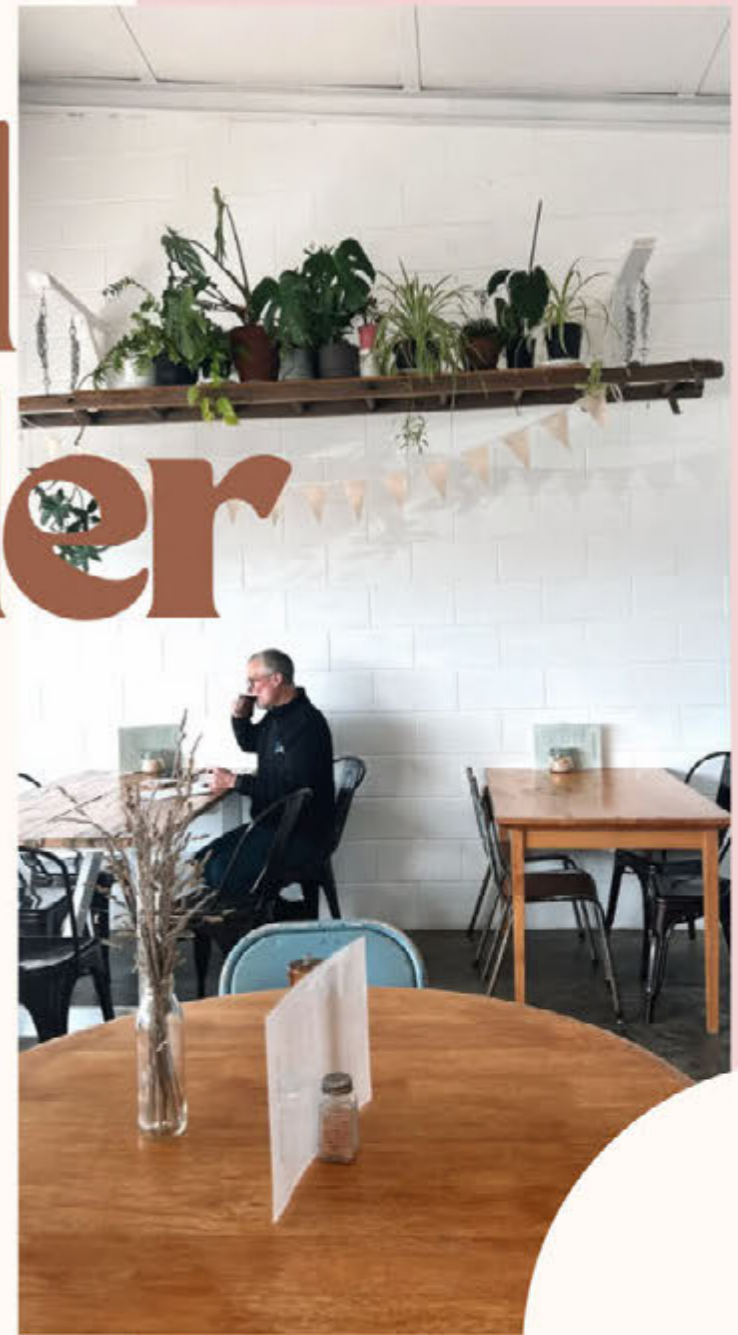
me that everything was ok and I was safe. I have tried every form of therapy to try and combat my fear, from cognitive behavioural therapy, acupuncture, naturopathy and even as far as hypnotherapy, but nothing has made more of an impact than Tony, and all the other Sharp pilots, taking time out of their day to try and help ease some of my anxiety and discomfort when flying. It is because of them that I am able to fly by myself, a feat that 10 years ago seemed unimaginable.

From my many hours of travelling on Sharp, I have learnt many techniques to help ease my flight anxiety, with the most notable being that despite flying with Sharp for 10 years, I have never once experienced a safety or flight issue. I have experienced my fair share of turbulence, although uncomfortable, I have always made it home safe, reinforcing how safe flying really is. I still consider myself a nervous flyer, but now I can truly appreciate how lucky I am to get the opportunity to fly with Sharp as much as I do. If flying on Sharp, or on planes in general, causes you anxiety, I hope it gives you peace of mind knowing that you are well and truly in good hands. 🙏

Island Larder

FOOD, COFFEE AND LOCAL PRODUCTS

ISLAND LARDER IS A SMALL LOCAL CAFE LOCATED ON BEAUTIFUL KING ISLAND. WITH IT'S RUSTIC CHARM IT'S ONE OF THE LOCALS FAVOURITE PLACES TO ENJOY THEIR COFFEE. ORDER NOW ON THE SKIP APP TO JUMP THE QUEUE.





Credit: Moorilla Gallery



Credit: Moorilla Gallery

**MUSIC, ART, LAWNS,
BOATS:
MONA FOMA 2024
UNLEASHES 17 DAYS OF
SUMMER MAYHEM**

Under embargo until 10am AEDT, 16 November 2023



Credit: Moorilla Gallery

Mona Foma, Mona's summer festival of music and art, returns for its sixteenth edition from **15 February to 2 March 2024**. Running across two cities over three weekends, Tasmanians and visitors alike will immerse themselves in Mona Foma's one-of-a-kind experience. This year's program includes unpredictable art, world premieres, and a thrilling array of Tassie exclusives—in unexpected and well-loved venues.

Brian Ritchie, Artistic Director, Mona Foma, says: 'Mona Foma wrangles over 500 performers and artists from places as far flung as Nigeria, Taiwan, Rajasthan and Launceston into a veritable orgy of creativity. If you can't find something to do, then you're dead—but then you wouldn't be reading this. So, buy tickets, except for TISM, which is free. One of the most reclusive bands (only three gigs in twenty years) for free in amongst the most unique water feature of any urban environment, qualifies as a once in a lifetime opportunity. Carpe diem.'



Program highlights include:

- Queens of **The Stone Age** return to Mona for their first ever gig on the museum's lawns.
- A free one-day concert at Launceston's stunning Cataract Gorge featuring **TISM**, **Cash Savage and The Last Drinks**, **Mulga Bore Hard Rock** and **FFLORA x Grace Chia**.
- **Paul Kelly** taking audiences on a live journey through his 2022 compilation: **Time**.
- **Courtney Barnett** in collaboration with Australian drummer **Stella Mozgawa**.
- Songwriter **Darren Hanlon** and percussion virtuoso **Bree van Reyk** join forces with the **Tasmanian Symphony Orchestra**.
- Barcelona-based producer **Filastine** and Indonesian neo soul singer **Nova** deliver live music and a meditation on the climate crisis from the deck of a sailing ship.
- Nigerian sound and installation artist **Emeka Ogboh** continues his global conversation on belonging with an immersive work revolving around gin in his first Australian commission.
- The world premiere of artist **Justin Shoulder's** ground-breaking performance work **ANITO**.
- French-Korean siblings and viral musical sensations **Isaac et Nora** (14 and 11 years old respectively) leading a family project with Latin-American songs learned by ear.

- In his Australian debut, Taiwanese visual and performance artist **Yahon Chang** uses his body as an axis to create art on a vast floor canvas.
- **Wayfinder** by Australia's leading contemporary dance company **Dancenorth** featuring music by **Hiatus Kaiyote** and design from visual artist **Hiromi Tango**.
- A weekend of **Mona Sessions** featuring international artists **Mogwai (SCO)**, **Lonnie Holley (USA)**, **Irreversible Entanglements (USA)**, **Holy Fuck (CAN)**, **Shonen Knife (JAP)**, **Wednesday (USA)**, **Michael Rother + Friends play Neu! (GER)** and **Shruti Sessions (IND)** alongside Australian artists, **Little Ugly Girls**, **Kutch Edwards** and **Australian Art Orchestra**, **Eleanor Jawurlngali Triad** and **Koi Kingdom**.
- The return of Mona Foma's late-night crowd favourite **Faux Mo**, this time converting **The Granada Tavern** into an autonomous community; a sovereign state of party.





MONA FOMA FIRST WEEKEND IN NIPALUNA/ HOBART

Following their highly anticipated tour announcement, Queens Of The Stone Age return after a six-year hiatus to bring their trademark swagger to Mona's lawns.

Tassie-born megastar **Courtney Barnett** brings her sell-out tour to Hobart, playing at the Odeon. Divided into two sets, the show will start with Courtney and collaborator **Stella Mozgawa** performing instrumentals and improvisations from their atmospheric soundtrack-album **End of the Day**, before getting stuck into a set of hits, favourites and deep cuts from Courtney's rich back catalogue.

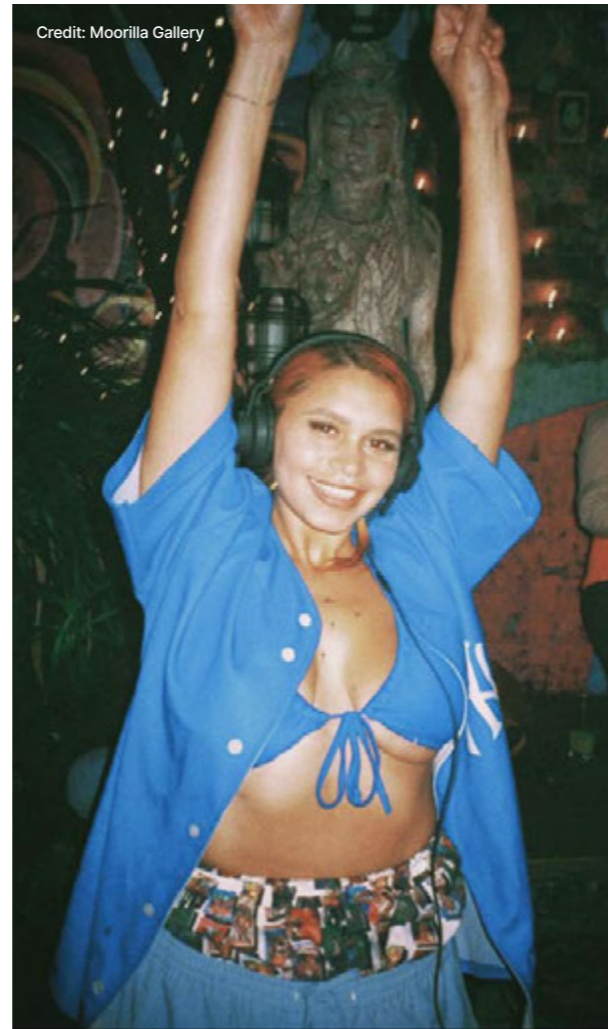
For two exceptional nights, the Odeon will play host to music legend **Paul Kelly** who will take audiences on a live journey through his 2022 compilation: **Time**. Over a two-year period, Australia's favourite troubadour released a series of themed compilations. Time was the first. These albums see him draw from his vast catalogue and trove of unreleased recordings for Mona Foma audiences.

Also at the Odeon, two of Australia's hidden gems, songwriter **Darren Hanlon** and percussion virtuoso **Bree van Reyk** join forces with the **Tasmanian Symphony Orchestra** for a special performance of Hanlon's reworked hits and Bree's original compositions promising a feast of collaboration and songwriting craft.

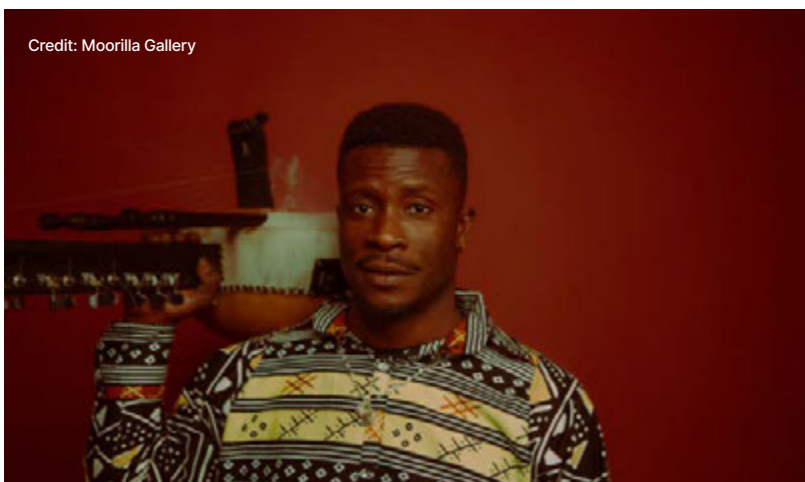
Credit: Moorilla Gallery



Credit: Moorilla Gallery



Credit: Moorilla Gallery



Credit: Moorilla Gallery

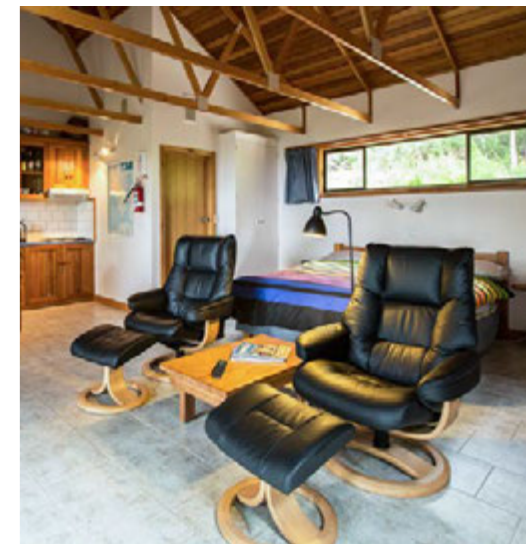
Partridge Farm



Discover the enchanting Partridge Farm B&B, a hidden gem nestled at the scenic southern end of Flinders Island. Surrounded by majestic eucalyptus trees, this self-contained holiday accommodation offers breathtaking vistas of Franklin Sound and the outer Furneaux Islands.

Partridge Farm comfortably accommodates up to 12 guests.

for bookings and further details visit www.partridgefarm.com.au

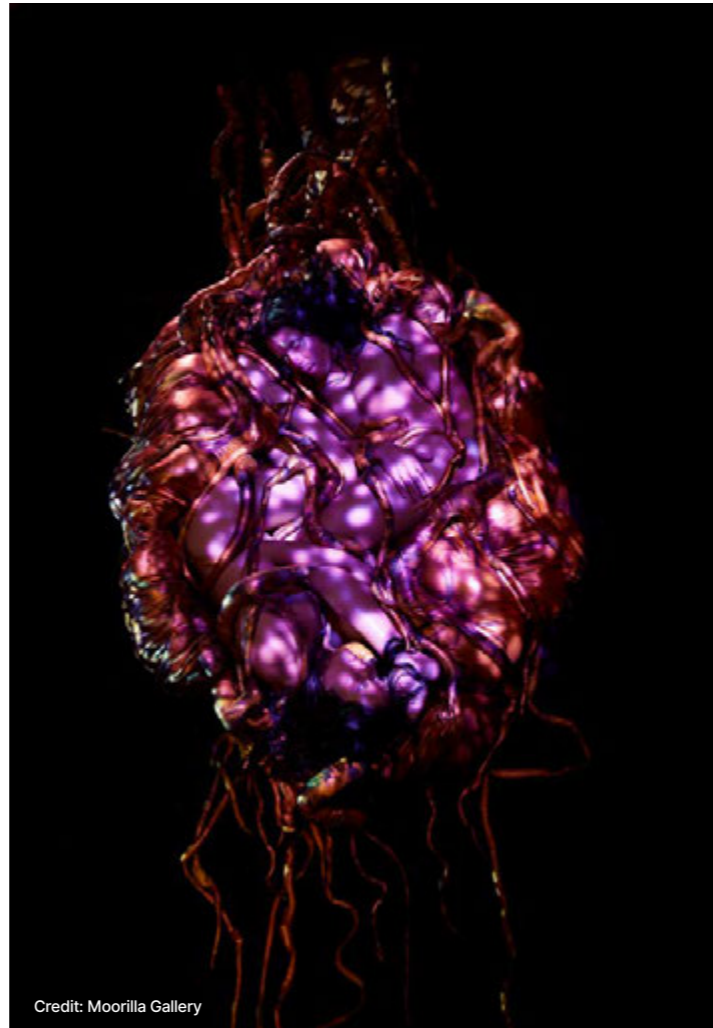


Credit: Moorilla Gallery



Across both weekends, a 70-tonne sailing ship will commandeer Franklin Wharf and Bellerive Waterfront for a unique cultural floating intervention—**Arka Kinari**—by **Filastine & Nova**. This multimedia spectacle set aboard a traditional schooner will use live music and cinematic visuals to spread resistance to the carbon economy, resilience to the impending floods, and re-engagement with the great ecological commons of the sea.

Nigerian artist and migrant **Emeka Ogboh** invites audiences on a global exploration of belonging through his project **Boats**. This immersive exhibition at Detached features a collaborative gin, crafted with Tasmanian expertise and native botanicals fused with those from West Africa.



Credit: Moorilla Gallery

Credit: Moorilla Gallery



Credit: Moorilla Gallery



This sensory journey delves into the essence of migration—you'll taste the gin (and snacks) amidst a 'symphony of intellectual conversations' and music from an accompanying sound installation. Emeka will also be working with Mona's Executive Chef **Vince Trim**, adding West African flavours and dishes to Mona's restaurants throughout the festival (where they'll also be paired with the gin).

Justin Shoulder's ground-breaking solo performance **ANITO** will have its world premiere at the Theatre Royal. Drawing from queer club culture, installation, visual arts, theatre and dance, elaborately costumed performers transform into 'creatures' animated by their own gestural languages accompanied by a live soundscape.

In an exciting new collaboration, Mona Foma will be teaming up with **Street Eats @ Franko Summer Pop-Up** to create an unforgettable night in Franklin Square. Known for its hyperactive inner-city night food and drink market, **Franko** will feature an electric line-up of musical acts including **Ajak Kwai**, **Kylie Auld** and **ㄚㄚㄚ (emi emi)**, promising to keep attendees fed, refreshed and grooving all night long.



Credit: Moorilla Gallery



Credit: Moorilla Gallery

Credit: Moorilla Gallery



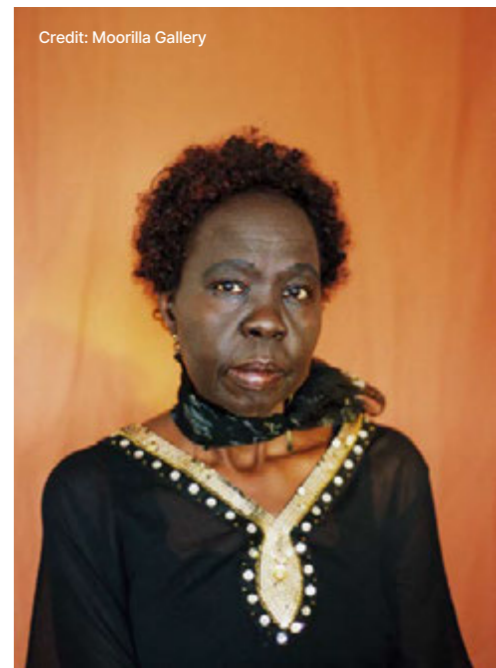
Credit: Moorilla Gallery



Credit: Moorilla Gallery



Credit: Moorilla Gallery



Credit: Moorilla Gallery



Credit: Moorilla Gallery

With music by **Hiatus Kaiyote**, design from visual artist **Hiromi Tango** and the community of Gurambilbarra, Townsville, **Wayfinder**, is the latest creation by Australia's leading contemporary dance company, **Dancenorth**. Performed at the Theatre Royal, the work features 70km of salvaged wool and an inflatable stage.

The combination of a spectacular location, PW1 (Princes Wharf 1) and an expansive 20 by 15 metre canvas will set the stage for a truly extraordinary experience. Here, audiences will witness Taiwanese artist **Yahon Chang** wielding a brush, sometimes as large as himself, across the canvas in real time. Fusing ancient techniques with contemporary expression, the mesmerising performance brings Chang's vision to life with every stroke and gesture. A first for Monna Foma, **The Shruti Sessions** will see musicians from the Hindustani traditions mix with Rajasthani folk musicians and Australian players in an open session of exchange, workshoping and collaboration—mixing old, new, and the unexpected. There'll be food, community, and general cross-cultural vibes. This Indian/Australian Summit will be a unique opportunity for masters of diverse Indian music forms to create new compositions together, marking a milestone in global music collaboration.

Credit: Moorilla Gallery



Credit: Moorilla Gallery



Credit: Moorilla Gallery



MONA FOMA SECOND WEEKEND IN NIPALUNA / HOBART

Mona Sessions, a summery showcase of live music on the Mona lawns returns for 2024. The line-up includes **Mogwai (SCO)**, **Lonnie Holley (USA)**, **Irreversible Entanglements (USA)**, **Holy Fuck (CAN)**, **Shonen Knife (JAP)**, **Wednesday (USA)**, **Michael Rother + Friends play Neu! (GER)**, **Shruti Sessions (IND)** and **Isaac Et Nora (FR & KR)**. These international artists are joined by Australian performers including **Little Ugly Girls**, **Kutcha Edwards** and **Australian Art Orchestra**, **Eleanor Jawurlngali Triad**, and **Koi Kingdom**.

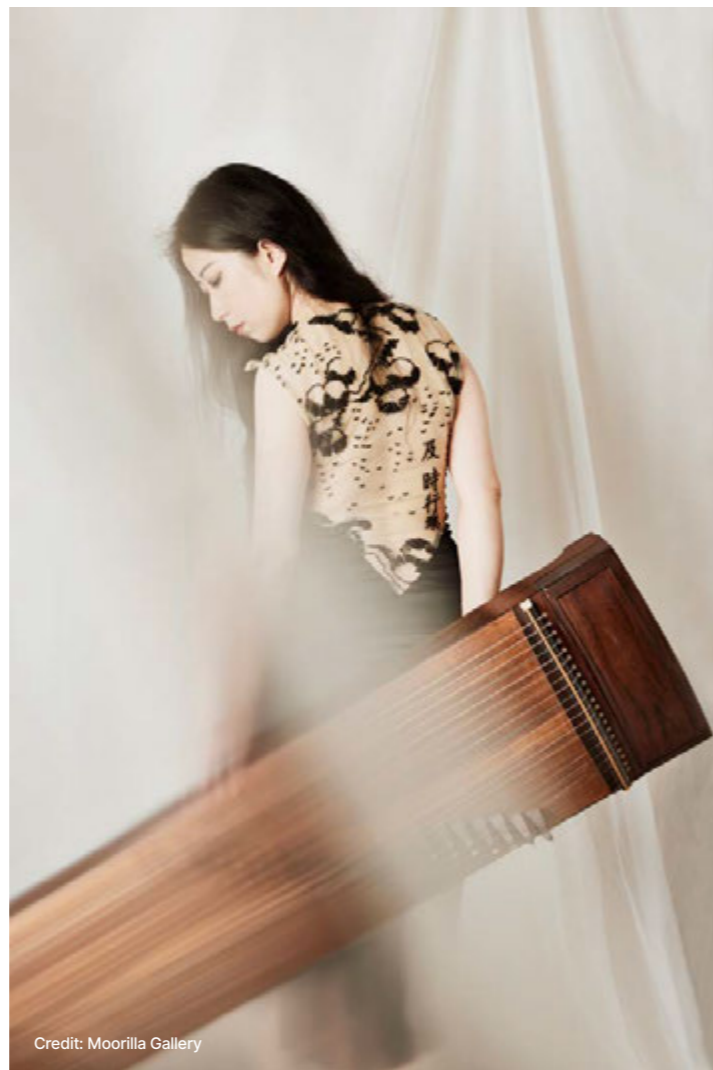
For one very special matinee performance, singing French-Korean siblings **Isaac (14)** and **Nora (11)** are set to delight audiences at the Hobart Town Hall on Sunday 25 February. These remarkable young prodigies, who have become a viral phenomenon, will celebrate the spirit of Latin American songs that they have learned to play by ear.

Throughout the weekend, various Monna Foma artists will be dipping into Monna's **Frying Pan Studios** to jam, record, or just have a quiet sit in the vocal booth. Visitors to the museum can make their way to the library for a sneak peek through the viewing window—who knows who they'll see (and hear).



Credit: Moorilla Gallery

Mona Foma's beloved **Morning Meditations** will feature sets from various Shruti Sessions artists—also at Moonah Arts Centre. The Granada Tavern, located just across from Mona in Berridale, will transform into the vibrant new home for the return of festival favourite, **Faux Mo**. The makeover will morph the tavern into a party paradise, an autonomous community, a self-contained state of revelry and celebration. Across two late nights and one sun-soaked Sunday session, punters are invited to become a citizen of Granada alongside international, national, and local



Credit: Moorilla Gallery

delegations of party royalty, and dance denizens. A ticket to this hedonistic party includes the freedom to explore many wondrous attractions and multiple non-stop stages of music, dance, and excess. Further programming in Hobart includes a rotating cast of local DJs under James Turrell's Armana at Mona, a not-day club within the museum, a free **Music in Exile** concert on the Mona lawns, RAWspace: a collaboration between Mona Foma and Theatre Royal, and of course ART (the museum's full of it).



Credit: Moorilla Gallery



Credit: Moorilla Gallery

MONA FOMA THIRD WEEKEND IN LAUNCESTON **3rd**

In a thrilling crescendo, the festival concludes with a one-day extravaganza in Launceston that sees Mona Foma unleash a free, high-octane sonic experience—set against the stunning backdrop of Cataract Gorge.

Revellers are invited to kickstart the day with the cherished festival tradition of **Morning Meditations** delivered by Tasmanian ensemble **Where Water Meets**.

As twilight descends, fans and newcomers will be in for an unforgettable experience as legendary band **TISM** takes the Launceston stage—having performed only three times in the last two decades—an incredibly rare outing for these confounding cult icons.

Also on the line-up will be rock heavyweight **Cash Savage and The Last Drinks**, teenage glam rockers from the NT, **Mulga Bore Hard Rock** and a stunning collaboration with **FFLORA + Grace Chia**—all set against the breathtaking landscape of Launceston's natural wonder.



Credit: Moorilla Gallery



Credit: Moorilla Gallery



Credit: Moorilla Gallery

Credit: Moorilla Gallery



Credit: Moorilla Gallery



Mona Foma tickets are available at 10am on Tuesday 21 November. Mona Foma is in nipaluna / Hobart from 15-25 February and in Launceston on 2 March 2024. There will be Auslan interpretation at Faux Mo on Friday 23 February, Mona Sessions on Sunday 25 February, and at The Gorge on Saturday 2 March. There will also be a tactile tour of ANITO on Saturday 17 February, and audio description at Wayfinder on Saturday 24 February.



Credit: Moorilla Gallery



Credit: Moorilla Gallery



Credit: Moorilla Gallery

ABSOLUTE BEACHFRONT SHACKS ON FARMLAND LOCATED CENTRAL TO EVERYTHING FLINDERS ISLAND HAS TO OFFER.

ENJOY OUR MODERN INTERPRETATION OF THE CLASSIC TASSIE BEACH SHACK HOLIDAY ON THE INCREDIBLE SAWYERS BAY WITH ITS MASSIVE GRANITE BOULDERS AND SHELTERED SANDY COVES.

OUR SHACKS ARE JUST A HUNDRED STEPS FROM THE WATER WITH EXPANSIVE VIEWS ACROSS BASS STRAIT TO THE OUTER ISLANDS.



PLANNING ON RETURNING TO FLINDERS ISLAND? CONTACT US DIRECTLY FOR SPECIAL RATES AND OFFLINE SPECIALS.



sawyers bay shacks

🌐 www.sawyersbayshacks.com
✉ clem@sawyersbayshacks.com
🕒 0411 255 179





**OSHER GÜNSBERG, RHYS NICHOLSON,
EM RUSCIANO, MICHELLE BRASIER,
REUBEN KAYE, CLEMENTINE FORD,
LINDA MORRISON, DAN KELLY,
ELIZA HULL TO FEATURE IN THE
2024 MALTHOUSE OUTDOOR STAGE
PROGRAM THIS SUMMER**

Melbourne's cultural heartbeat is getting ready to pulse as Malthouse Outdoor Stage announces its triumphant return for its third consecutive summer season, commencing in February 2024.

Malthouse's annual summer venue has undergone a major upgrade supported by the Victorian Government ahead of the 2024 season, solidifying its status as a permanent outdoor fixture and Melbourne's premier destination for live outdoor entertainment.

Completed this month, the extensive project has improved both aesthetics and functionality streamlining the seasonal setup

for performers, while also promising to enhance the overall visitor's experience. Malthouse audiences will be treated to an abundance of outdoor seating, locally produced wines from the Malthouse Bar as well as Greek snacks from its new resident cafe Koyzina.

As it prepares to usher in a new era of openair performances, the reinvigorated Malthouse Outdoor Stage invites audiences to immerse themselves in an unforgettable summer of brilliant live music, comedy, cabaret and podcast entertainment.

Malthouse Artistic Director & Co-CEO Matthew Lutton said:

'Malthouse is kicking off the summer with a completely revamped outdoor stage. The program will feature some of the country's most exciting comedians including Reuben Kaye, Rhys Nicholson, Em Rusciano and music from Eliza Hull, and Snarkircuslindyband. We're looking forward to audiences experiencing stellar acts, in a truly one-of-a-kind setting, under the night sky.'



A RATIONAL FEAR

(Thu 1 Feb)

Join **Dan Ilic** (*F-Yes*) and **Lewis Hobba** (*Triple J*), with guest fearmongers **Kirsty Webeck** (*Comedy All-stars*), **Charlie Pickering** (*The Weekly*), **Meshel Laurie** (*Australian True Crime*) and **DJ Andy McClelland** (*Finishing School*) as they wrangle big names in comedy, politics and podcasting for a night of laughing in the face of the scariest things facing our democracy.



SEE ALSO AL FRESCO

(Sat 3 Feb)

Hosts **Kate Jinx** and **Brodie Lancaster** invite audiences to an al fresco edition of their fpop culture podcast *See Also*. They will break down what they're watching, reading, and listening to. Joining the live discussion are special guests **Courtney Barnett** and **Stella Mozgawa**.

SNARSKIRCUSLINDYBAND

(Fri 2 Feb)

SnarskiCircusLindyBand is Australia's indie rock supergroup, made up of band members we know and love: **Rob Snarski** (*The Blackeyed Susans*), **Lindy Morrison** (*The Go-Betweens*), 'Evil' **Graham Lee** (*The Triffids*), **Shane O'Mara** (*Rebecca's Empire*), and **Dan Kelly** (*Dan Kelly & The Alpha Males*).



DEAR NELLY LIVE

(Thu 8 Feb)

Dear Nelly presents a special live recording of **Nelly Thomas'** smash-hit podcast *Dear Nelly: sex, dating and relationships from the other side of 40*. Join **Nelly** and this stellar cast of guests for questions, stories and laughs—with a focus on the trials and tribulations of the guests' dating and relationships histories.

MDT *design*

Individually designed, hand-made jewellery



AUSTRALIA'S MOST AWARD WINNING JEWELLERS

MDTDESIGN.COM.AU

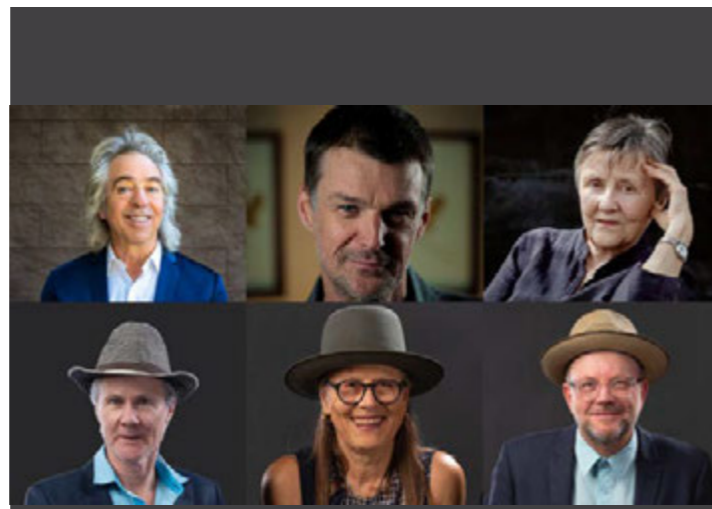
348 COLLINS STREET MELBOURNE AUSTRALIA • 03 9654 6805 • SALES@MDTDESIGN.COM.AU





MEL & SAM
(Fri 9 Feb)

Join **Mel & Sam** as they perform a manic Malthouse mixtape of all the best hits from their award-winning comedy shows *No Hat, No Play! The Cabaret, Shit-Wrecked!* and *High Pony* in this tribute-style show.



UNDERScore
(Sat 10 Feb)

Sally Ford and the Idiomatics will fuse their Latin, film, ska and funk influences to create uplifting groove-drenched sounds, drawing inspiration from ARIA-winning Melbourne **Ska Orchestra**, the **Spaghetti Western Orchestra**, **Texicali Rose**, **Dr Hernández**, **Yothu Yindi**, and **The Black Sorrows**.



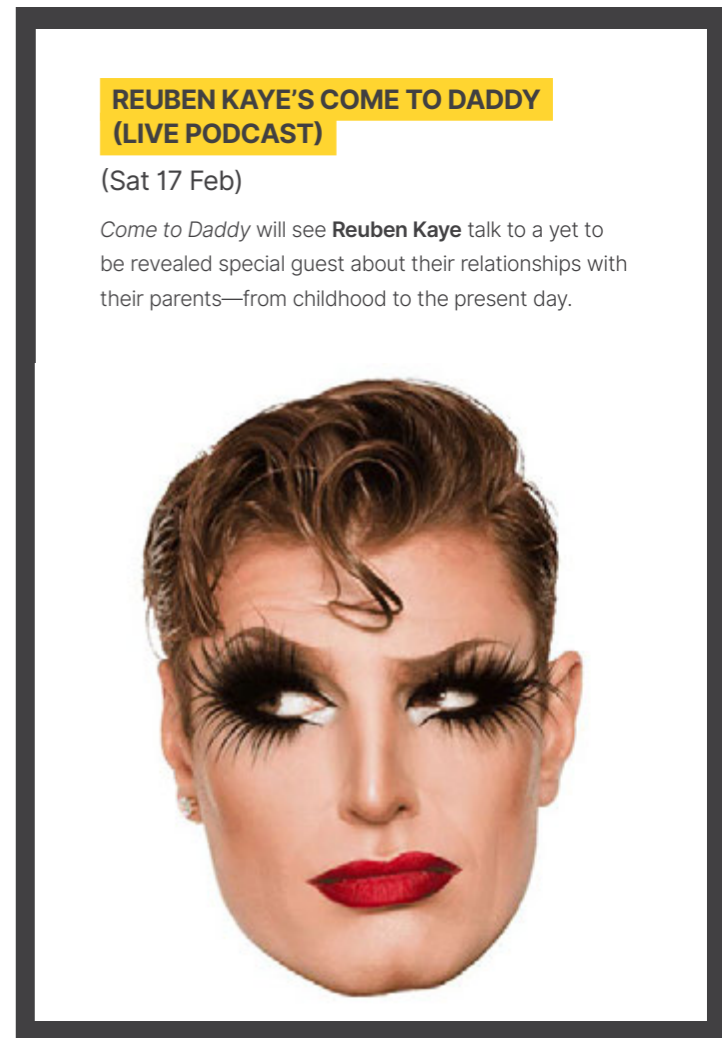
RHYS & FRIENDS
(Fri 16 Feb)

Hey everybody, I'm **Rhys Nicholson** and these are all my best friends in the whole world*. Come hang out for the evening, or not, we don't really mind.

**Who are also professional performers*

REUBEN KAYE'S COME TO DADDY (LIVE PODCAST)
(Sat 17 Feb)

Come to Daddy will see **Reuben Kaye** talk to a yet to be revealed special guest about their relationships with their parents—from childhood to the present day.



ONE NIGHT STAND
(Wed 14 Feb)

An intimate night of funny conversations with author and cancer survivor, **Patrice Capogreco**. After a cancer diagnosis, Patrice realises she will survive—but questions if her sex life will? This event hosted by **Namila Benson** (ABCTV) and alongside musical guests **Nkechi Anele**, **Jim Lawrie** plus more.

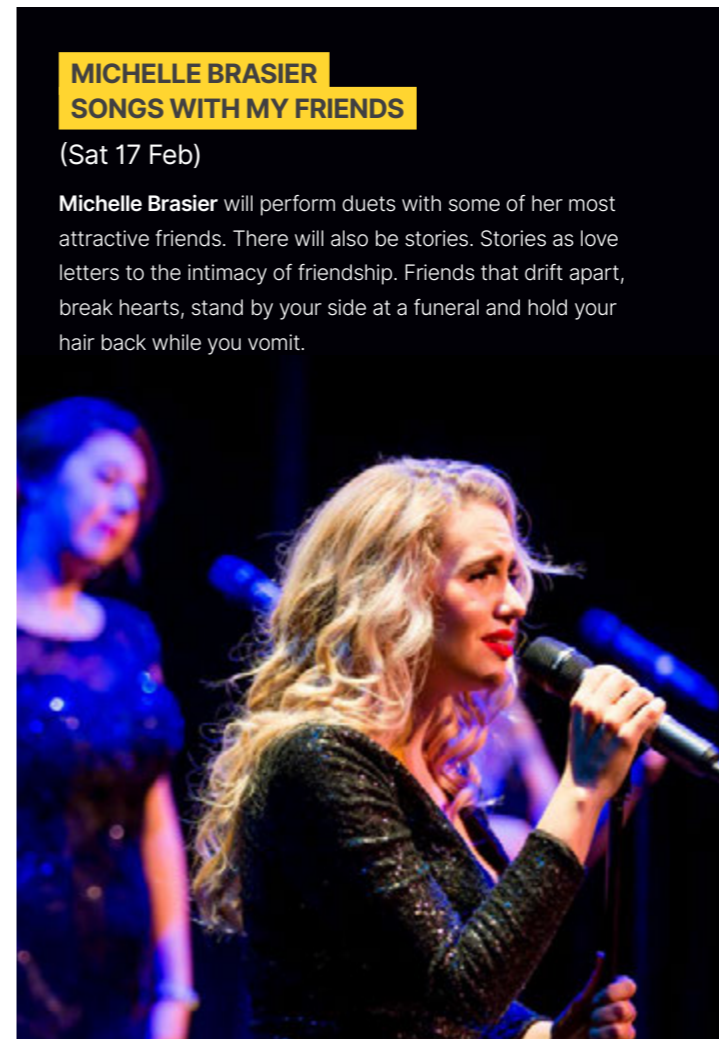



EMSOLATION LIVE
(Thu 15 Feb & Wed 21 Feb)

Let **Em Rusciano** speak to you in her soothing tones when she and her best friend **Michael Lucas** catch up and break down the week in news. Always poised to go deep, or to swim shallow, these two can swing from Harry Styles' hair to US politics.

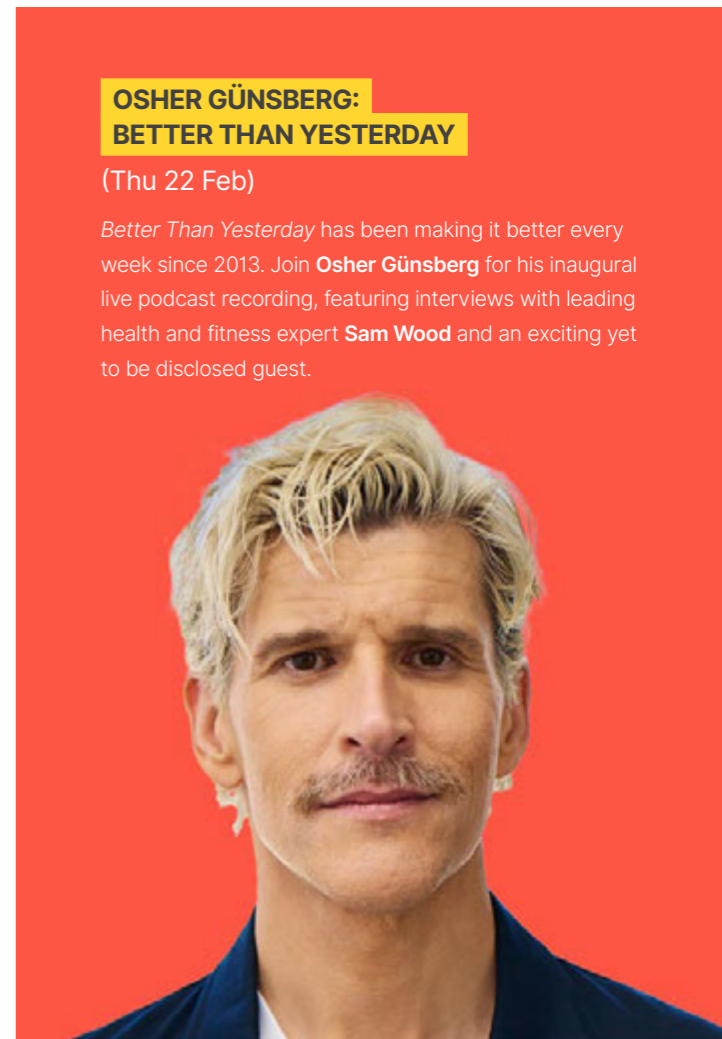
MICHELLE BRASIER SONGS WITH MY FRIENDS
(Sat 17 Feb)

Michelle Brasier will perform duets with some of her most attractive friends. There will also be stories. Stories as love letters to the intimacy of friendship. Friends that drift apart, break hearts, stand by your side at a funeral and hold your hair back while you vomit.



OSHER GÜNSBERG: BETTER THAN YESTERDAY
(Thu 22 Feb)


Better Than Yesterday has been making it better every week since 2013. Join **Osher Günsberg** for his inaugural live podcast recording, featuring interviews with leading health and fitness expert **Sam Wood** and an exciting yet to be disclosed guest.





ELIZA HULL: HERE THEY COME
(Fri 23 Feb)

Australian music artist **Eliza Hull** will perform songs from her forthcoming album *Here They Come*. Her single *Running Underwater* saw Hull work with ARIA Award-winning producer **Pip Norman** (Baker Boy, Missy Higgins) The track was first performed during a powerful appearance on ABC's Q&A.




THE CABINET OF DR CALIGARI WITH A LIVE ORIGINAL SCORE BY THE ANG FANG QUARTET
(Sat 24 Feb)

The **Ang Fang Quartet** will perform a live score to the famous **Robert Wiene** silent horror film *The Cabinet of Dr Caligari*. A nightmarish story of a mad doctor who hypnotises a somnambulist, the film is brought to life by the Quartet's original score, featuring cello, vibraphone, trumpet and guitar.

LOVE SERMON
(Sat 2 Mar)

Writer **Clementine Ford** and musician **Libby O'Donovan** will have audiences laughing, weeping and cheering as they guide them on a life affirming exploration of love and the powerful ways it makes its home in our hearts.




Malthouse Outdoor Stage is generously supported by the Restart Investment to Sustain and Expand (RISE) Fund – an Australian Government initiative and the Victorian Government through Creative Victoria.



Tickets on presale now to Malthouse Supporter Community at: **malthousetheatre.com.au**
Tickets on sale to general public on Friday 17 November.


UNDER THE STARS WITH UNAPOLOGETICALLY ASIAN
(Thu 29 Feb)

Unapologetically Asian invites audiences into Malthouse's backyard oasis for an evening *Under The Stars*. Picture sitting around a campfire, great mates, sick tunes, good bants, tasty refreshments, and a chat with a surprise guest.



BIRDSNAKE LIVE
(Fri 1 Mar)

Naarm's groove merchants **Birdsnake** are crafting a name for themselves as one of the most entrancing acts in the local scene. The Melbourne six piece are putting together a special 90-minute live show featuring tunes from their debut vinyl, unreleased music and extended kraut-funk improvisations.



A community-run museum displaying the cultural and natural history of the Furneaux Islands




SCAN ME



OPENING HOURS
1 May – 24 December
Sat & Sun 1.00pm – 4.00pm
26 December – 30 April
Tues to Sun 1.00pm – 5.00pm
Closed Mondays & Good Friday

Visit us at 8 Fowlers Road, Emita, Flinders Island
Phone: 03 6359 8434 Email: furneauxmuseum@gmail.com

MOUNT WILLIAM NATIONAL PARK

Rocks splashed orange with lichen, turquoise water and white-sand beaches form the distinctive palette of Mount William National Park.

Located in Tasmania's far north-east, the park is significant for the conservation of the state's coastal heathlands and dry sclerophyll plants. It's wildly colourful in spring and summer, when the park's open grasslands are ablaze with fields of native flowers. And the uniquely *Australian Xanthorrhoea* (also known as the grass tree), with its grass-like skirt and tall flower spike, is common throughout the park.

Stretch out on secluded squeaky-sand beaches before heading to an overnight camp.



LIFE AQUATIC

As well as breathtaking walks, the park is known for its fishing, swimming and diving. The offshore reefs at Georges Rocks and Eddystone Point have excellent visibility and are among the best dive sites in the state, and anglers can take bream and Australian bass at Ansons Bay.

ANIMAL ATTRACTION

There's a remarkable diversity of animals in the park, including Forester kangaroos, wombats, echidnas, Tasmanian devils, Bennett's wallabies and pademelons. Plan a dusk stroll to see the locals.

ON THE WING

Birds are particularly abundant in the park, inhabited by honeyeaters, wrens, robins, finches and pardalotes. Yellow-tailed black cockatoos are common here; migratory birds such as mutton birds, silvereyes and swamp harriers drop by; and albatrosses, white-bellied sea eagles and wedge-tailed eagles soar overhead.

Walks

WUKALINA / MOUNT WILLIAM SUMMIT

This gentle walk (5hr return, 11km) starts at Stumpys Bay No 4 campground, with extensive views of the heath, coast and distant Bass Strait islands. There's also a shorter, 90min version.

COBLER ROCKS WALK

Start this walk (2hr return, 6km) at Stumpys Bay No 4 campground and enjoy a loop that passes lagoons teeming with wildlife as well as remote sweeping beaches with rocky outcrops.

BAY OF FIRES

Luxury guided walks in the area include the Bay of Fires Lodge Walk and the wukalina Walk, which include meals, accommodation and interpretation.

Need to know

CAMPING

It's permitted throughout the park, with six designated campgrounds. Bookings are not taken. For beachside camping, head to one of the four campgrounds at Stumpys Bay or Top Camp near Musselroe Bay (4WD recommended).

FACILITIES

A day shelter with gas barbecues is located near campground No 4 at Stumpys Bay in the park's north, and picnic tables, fireplaces and pit toilets are located near most of the campgrounds. You'll need to bring your own drinking water.

ACCOMMODATION

Not a camper? No problem - the nearest accommodation is at Gladstone (25min drive, 28km) or at Ansons Bay, which is at the park's edge.

ENTRY

A parks pass is required for entry to Tasmania's national parks.

WHERE

Mount William National Park is a 2hr 15min drive (165km) north-east of Launceston via Gladstone. The southern end of the park can be reached via gravel road from St. Helens.

discovertasmania.com.au

Mount William National Park

Pristine sandy beaches and turquoise waters

Mount William National Park is a pristine paradise tucked away on the far North-East Coast of Tasmania, at the northern end of the Bay of Fires. This windswept coastline features rocky outcrops marked with bright orange lichen and seemingly endless stretches of powder-white sand that squeaks beneath your feet – all set against a backdrop of crystal-clear turquoise water.

Mount William National Park is peaceful and relaxed, perfect for walking, fishing, swimming or kicking back at your beachside campsite doing nothing at all.

The Park's namesake, wukalina/Mount William, sits at 216m above sea level. From the summit, enjoy panoramic views of the coast and, on a clear day, all the way to the Furneaux Islands in Bass Strait.

Mount William National Park is home to an abundance of Tasmania's marsupials and, as you explore, you can spot kangaroos, wombats, wallabies and echidnas. The coastal birdlife is just as varied, with over 100 species, ranging from tiny honeyeaters, wrens and robins, to terns, gannets, albatrosses and oystercatchers.

Situated on the spectacular North-East Coast, Mount William National Park offers visitors a varied range of beautiful walks, quiet stretches of sand, and the opportunity to view some of Tasmania's unique wildlife. As one of the State's more remote national parks, this is an ideal place to enjoy some solitude and relaxation.

The coastal waters are perfect for swimming, boating, or exploring with a snorkel or scuba equipment. Dive below to admire some of the colourful marine habitats off Georges Rocks and Eddystone Point, before finding your own private spot to unwind on the beach. To try your hand at fishing, head to Ansons Bay or Musselroe Bay and see if you can catch your dinner.

For keen walkers, the options range from a leisurely stroll along one of the many beaches to longer journeys through a diverse range of habitats. Cobler Rocks is a gentle two-hour return walk which transitions from flat fire trails to beach walking. Forester kangaroos are a common sight in the banksia-filled heathland where you'll begin the walk, and further on you'll be rewarded with expansive views of the coastline.

Wukalina/Mount William itself is another walk that's worth your time: 90 minutes return on a well-defined track, shaded by black gums, banksias and she-oaks. The highest point in the Park is just 216 m, but in clear weather you can look out to some of the Bass



Strait Islands and reflect on the area's rich Aboriginal history. Keep an eye out for wedge-tailed eagles soaring above.

Make sure you bring your camera. From granite boulders covered with distinctive orange lichen to colourful fields of wildflowers, this is a place full of photo opportunities, and you'll want to capture every single one.

The large population of grazing marsupials around wukalina/Mount William has led to large lawn-like areas, and camping is permitted at a number of these sites throughout the Park.

Nature & Conservation

Mount William National Park is home to an astonishing diversity of animals, including forester kangaroos, wombats, echidnas, Tasmanian devils, Bennetts wallabies and pademelons.

Additionally, you'll see an enormous variety of birdlife. Honeyeaters, wrens, robins, finches, pardalotes, and beautiful yellow-tailed black cockatoos are all commonly sighted in the park.

Migratory birds like short-tailed shearwaters (mutton birds) and swamp harriers often pass through, and you should keep an eye on the sky for albatross and white-bellied sea eagles soaring overhead.

Mount William is also a significant area for the conservation of Tasmania's coastal heathlands and dry sclerophyll plants. If you visit in spring or summer, you'll be treated to the sight of hundreds of different species of colourful wildflowers in bloom.

For more information on our wildlife please see Tasmania's wildlife.

Visit our caring for wildlife page for more information on interacting with and protecting our native animals.

Cultural heritage

The North-East Coast of Tasmania has a rich Aboriginal history, and the culturally significant wukalina/Mount William, the Park's namesake, is dual named and known as wukalina. More than

ninety shell middens have been found in the Park, along with nearly sixty artefact sites.

In 1773, British navigator Captain Tobias Furneaux named the area 'The Bay of Fires' because of the many Aboriginal fires he saw. The Aboriginal name is known as Irapuna, which extends from Eddystone Point in the north to Binalong Bay in the south.

After European settlement, much of the area was used for farming and grazing, including by the British Tobacco company. The Eddystone Point Lighthouse – located at the southern end of the park and built from striking pink granite – opened in 1889.

In the 1970s, partly to provide a refuge for the then-endangered forester kangaroo, Mount William was established as a national park. It has been expanded several times since then, most recently in 1999.



Safety Message
 Beaches in this area are not patrolled, so be water safe. Look out for rips and undertows. The waters around the Park provide some great opportunities for boating and fishing, but there are many reefs just below the surface, so care is needed.
 Take the time to check the fire conditions in the area where you are planning to visit.



Getting There

Located north-east of Launceston, Mount William National Park is reached by back roads from Gladstone. From Launceston, travel to Gladstone via Scottsdale (A3 and B82 – around 3 hours’ drive), or via the East Tamar and Bridport (A8 and B82 – around 2 hours’ drive).

From Gladstone, it’s a further 17 kms on unsealed roads (C843 and C845) to the northern park entrance where the five main camping areas are.

Deep Creek Campground is at the southern end of the park, near larapuna/Eddystone Point, and can be accessed by driving north from St Helens or east from Gladstone. Both of these routes take approximately 30 mins via unsealed roads (C843 and C846).

The nearest petrol is available at Gladstone or 24 hour petrol is available in St Helens.

Please be aware that when driving between sunset and sunrise you are sharing the road with wildlife. For more information, please see Caring for Wildlife.

Where possible, please avoid driving in our reserves at night. You are sharing the roads with our native wildlife, so take it slow and watch out for animals on the road.

Know before you go

There are six designated campsites in the Park, please see our Mount William National Park - camping page for more information.

Campfires are only permitted at designated campgrounds within designated fireplaces. Campfires are prohibited during seasonal fire restrictions. Never leave your campfire unattended - it is

prohibited. For campfire safety and how to check whether any restrictions are in place see Campfires and fire restrictions. Always check local signage for campfire restrictions before lighting a campfire. Bring your own water and firewood. It is best to have a fuel stove with you for cooking, as restrictions can change.

For the safety of everyone - completely extinguish your campfire before you depart and ensure no hot coals remain. Remember - Soak it. Stir it. Soak it again.

Please take all rubbish away with you.

Aboriginal middens are protected by law, please do not disturb or damage them.

Find out other essential information for visiting Tasmania’s parks and reserves on our Know before you go section. 📍



Credit: Jillian Mundy

WUKALINA WALK

takara waranta | walk with us

Multi-award winning wukalina Walk is currently the only Palawa owned and guided multi-day hiking trip and, therefore, the only one of its kind in the world. Our walk is ground-breaking in that it provides a chance for us as to tell our story on our homelands. This cultural living landscape is interpreted, on wukalina Walk, by guides with lived experience and Ancestral connection to the cultural knowledge they share. Plus the food is pretty special. The architecturally designed standing camp, Krakani Lumi, has been purpose built within a national park. Eddystone Point Lighthouse precinct, where we spend the last night, is held by our community under a 40-year lease.

After we introduce you to our Country, we begin the hiking element of wukalina Walk through bushland full of melaleuca and banksia.

From the summit of Wukalina you'll be able to see our cultural landscape which extends all the way out over our sea Country to Tayaritja (Bass Strait Islands).

Our final night is on the most northern headland of Larapuna (Bay of Fires). For the past 250 years this area has been referred to as Bay of Fires, since English navigator Tobias Furneaux counted over 200 fires along the coastline. You will learn more about this history from our perspective, including the importance of cultural burning practices, and other fires that would have been documented and sighted during this time.

There's so much more to know about our intensely beautiful homeland but the only way to properly share our knowledge is being with you on Country.

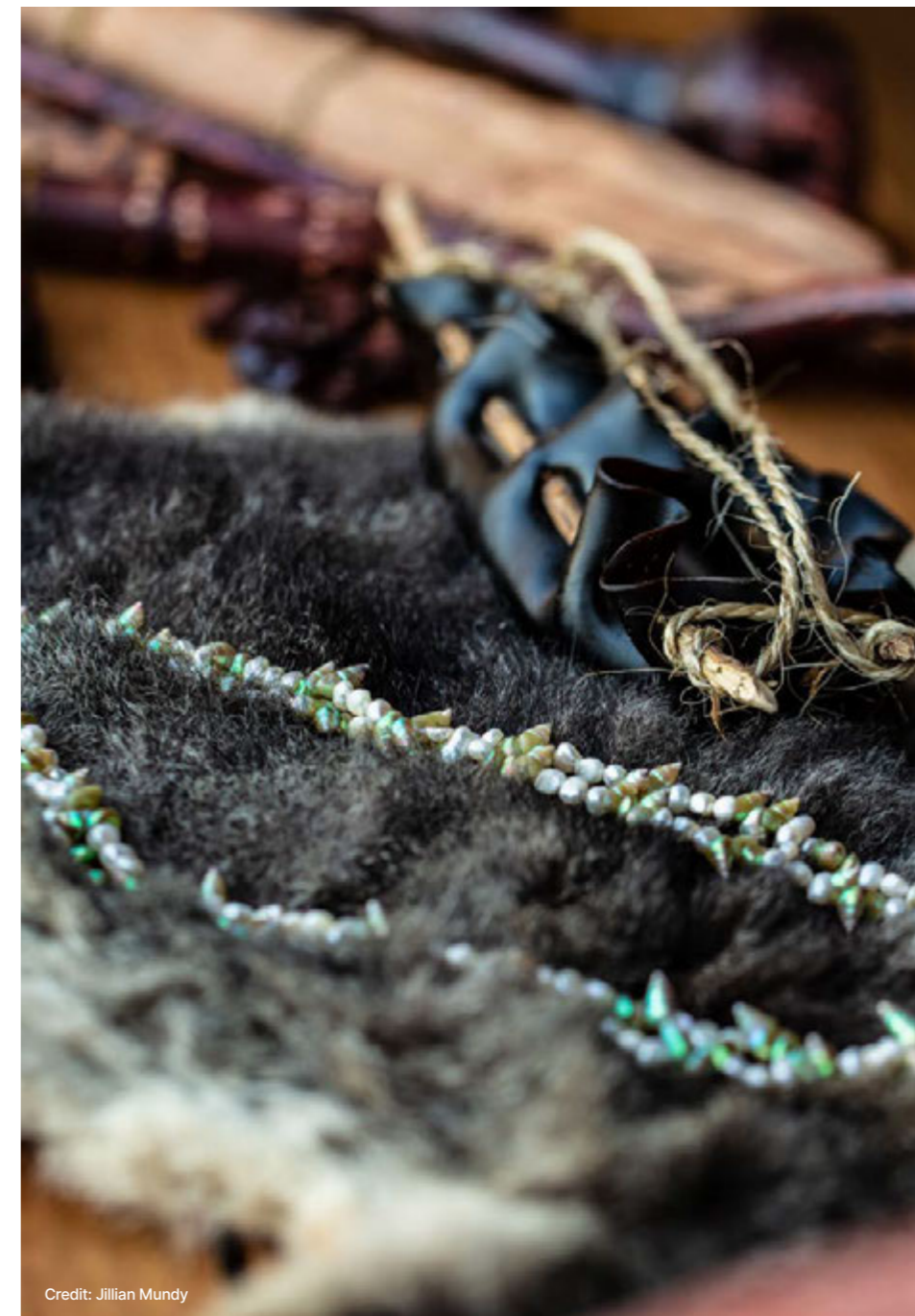
wukalina Walk is a 4-day/3-night Palawa-owned-and-led guided experience involving cultural activities, bush tucka and traditional foods. There are only two main days of hiking so plenty of time to sit and yarn.

Award-winning wukalina Walk is entirely different to anything else in Lutruwita or, in fact, anywhere in the world.

Your small group, of up to ten people, will be led on foot by Aboriginal and Torres Strait Islander guides to learn about land and sea Country. Guides have lived experience and thousands of generations of Ancestral connection to the knowledge they share.

For the first two nights you'll sleep at the architecturally designed standing camp, Krakani Lumi (resting place), in domed-ceiling huts set within coastal heathland. The third night is spent in a beautifully repurposed and restored lightkeepers cottage at the most northern end of Larapuna (Bay of Fires).

wukalina Walk will deepen and expand your understanding of and appreciation for our culture and our strong community here in Lutruwita.



Credit: Jillian Mundy

Although history is an integral part of this tour, wukalina Walk is as much about the lives of us as Palawa today. Supporting Palawa-owned businesses, across the island, contributes to our self-determination by creating more opportunities for the Palawa community to access, manage, protect and care for Country.

Self-determination, for us as Aboriginal and Torres Strait Islander peoples, is cultural governance. This means First Nations people having the power and authority to make choices and decisions that impact our lives. Self-governance allows us to meet our own cultural, social and economic needs. An integral aspect of self-determination is re-empowerment in land management that aligns with our values, morals and cultural protocols. The right of self-determination is a right of peoples rather than individuals. 🇺🇸

wukalina Walk departs Launceston from September to April/May. Throughout the season we offer a number of guaranteed departures regardless of guest numbers. See departure dates here.



The walk in detail

Four-day/three-night wukalina Walk runs between September and April/May. Throughout the main walking season we have a number of guaranteed departures, regardless of guest numbers.



Credit: Jillian Mundy

day one

The journey begins

- Launceston to Wukalina and Krakani Lumi

DAY ONE

You will be picked up from your hotel in Launceston, or make your own way to the Elders Centre ('Chalmers Hall') on St John Street in Launceston.

Get to know Elders, guides and other guests over fresh scones and a cuppa. Spend some time inside what is an important place for the Palawa community. On the walls are historic photographs, stunning monochrome portraits of Elders and framed cultural arts such as shell necklaces and quilts from Truwana (Cape Barren Island).

Backpacks, gaiters and rain jackets will be issued before departure if required.

We then climb onboard a minibus and enjoy the scenic drive to the North East. You'll learn some Palawa and post-invasion history along the way. Have a stretch and a coffee in the coastal town of Bridport and, later, a quick stopover in the small town of Gladstone. The drive ends at Wukalina (Mount William National Park).

This is Trawlwoolway Country where the cultural walk begins. You'll be led as a group to the 216-metre-high summit of Wukalina – only 2km from the carpark – for a picnic lunch with 360-degree views.

Look out across the cultural landscape as you learn about Truwana (Cape Barren Island) and other Tayaritja (Bass Strait Islands). On a clear day, you will be able to see the dramatic features of islands that have both historic and contemporary significance to us.

After lunch you will be guided towards the coast, stopping along the way to hear cultural and botanical interpretations from our qualified guides, and potentially spotting animal and bird species endemic to the area.

Once you arrive at the purpose-built standing camp of Krakani Lumi (resting place), relax around the firepit or in the domed lounging area or in your private hut. Regroup for drinks and dinner. Spend the evening around the fire in conversation with guides. Settle down to a comfortable night's sleep in your domed hut under cosy doonas and wallaby throws.

distance - 11km
difficulty - medium
walk time - approximately 4.5 hours



Credit: Jillian Mundy



Credit: Jillian Mundy

day two

Time on the coast – Krakani Lumi

Today is spent in and close to camp. After a leisurely breakfast you'll be guided along a traditional coastal pathway through living cultural landscapes. This beautiful part of the coast, with its fine bright sand and rounded rocks, is incredibly important to Palawa.

Interpretation by guides will focus on traditional food sources, medicines and animals. You'll learn about practices of the past as well as those that continue in the present day and will do so into the future. There will be opportunity to sample coastal bush

tucker and learn new this living cultural landscape.

Lunch will be served back at Krakani Lumi. The afternoon is a time to relax and to take part in and learn about some of our cultural activities.

Guides, and sometimes an Elder, lead these cultural sessions around the fire or sitting on wallaby skin cloaks in the striking domed sitting area. These and other important cultural practices connect palawa to each other and their Ancestors.

Dinner that evening includes traditional foods such as mutton bird and wallaby. Watch guides cook on the fire and, as the temperature drops as evening comes, share another meal together inside around the long table in the kitchen.

You may encounter wildlife such as prupilathina (wombats), payathanima (wallabies) and kangaroos. Enjoy another night sleeping at Krakani Lumi.

distance - no more than 5km
difficulty - easy medium
walk time - approximately 2 hours



Credit: Jillian Mundy



Credit: Jillian Mundy

DAY THREE

day three Walking the beach – Krakani Lumi to Larapuna

After breakfast it's time to say goodbye to Krakani Lumi and head south, on foot, along the beach towards Larapuna (Bay of Fires). Follow the line of sand and round the rocky headlands covered in the striking red lichen typical to this region.

This is the longest day of walking, and most is on sand, but the distance is broken up by the guides sharing stories and knowledge. There are also snack breaks, a lunch break and you'll sample seasonal bush tucker.

You're also likely to get engrossed in conversation during those long beach stretches or lose time in personal reflection. Have lunch together lounging in the dunes or sitting near a marsupial lawn.

The destination is in sight for much of the day and by mid-afternoon you'll arrive at Larapuna. Our community has a 40-year lease on Eddystone Point Lighthouse Precinct.

Your final night's accommodation is in a beautifully restored lightkeepers cottage. The interior of the cottage has been renovated and redecorated throughout. The pink granite exterior walls, which had been suffocating under blue paint, have been fully revived.



Credit: Jillian Mundy

Settle into your hotel-style room within the cottage and put your feet up or join the group for nibbles and a drink in the lounge. Peruse the reference books, have a wander or sit on the veranda and watch the light change as the sun sets.

This is the last night of the trip and you'll share an intimate dinner that evening. A delicious wallaby lasagne will be served and there will be opportunity, over the meal, to reflect on the last three days together and share stories.

distance - 17km
difficulty - medium to hard
walk time - approximately 6 hours



Credit: Jillian Mundy



Credit: Jillian Mundy



Credit: Jillian Mundy



Credit: Jillian Mundy

For the past 250 years this area has been referred to as Bay of Fires, since English navigator Tobias Furneaux counted over 200 fires along the coastline. You will learn more about this history from our perspective, including the importance of cultural burning practices, and other fires that would have been documented and sighted during this time.

From your vantage point at the top of the lighthouse it's not uncommon to see black swans, arctic terns, pelicans, sea eagles and, at certain times, a pod of dolphins or even whales in the water below.

Lunch is served before boarding the minibus back to Launceston. The driving route to the city is via Derby, where you'll have a cafe stop.

Arrive back at the Elders at approximately 5:30pm before catching your flight home, settling into one of the city's hotels or heading back to your Tasmanian home. 🍷



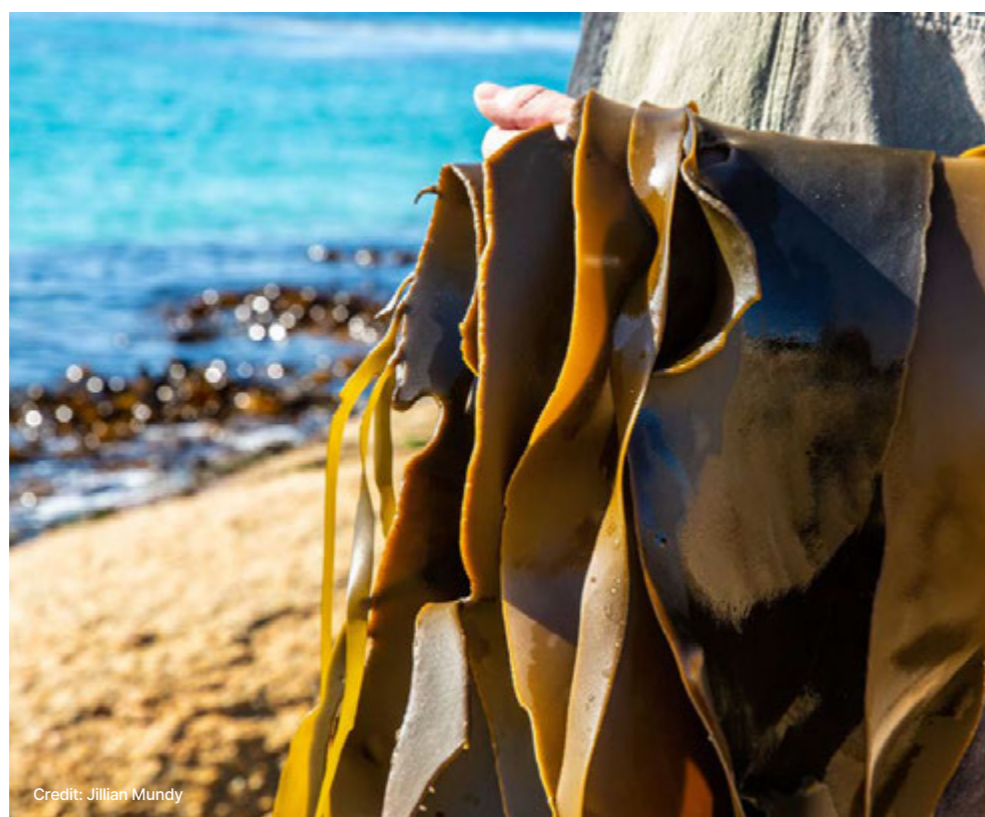
Credit: Jillian Mundy

day four

The next stage – larapuna to Launceston via Derby

There's time for a bit of a sleep-in this morning followed by a leisurely breakfast. Although the hiking element of the trip is over you will be guided on foot to various points of interest on this northern headland of Larapuna. Walk to a scenic lookout, a rock quarry on a beach and up into the lighthouse tower – all 129 steps.

Eddystone Point Lighthouse is fully operational and wukalina Walk guests have the opportunity to access this historic building. From the top you can take in unrivalled views of the world-renowned larapuna.

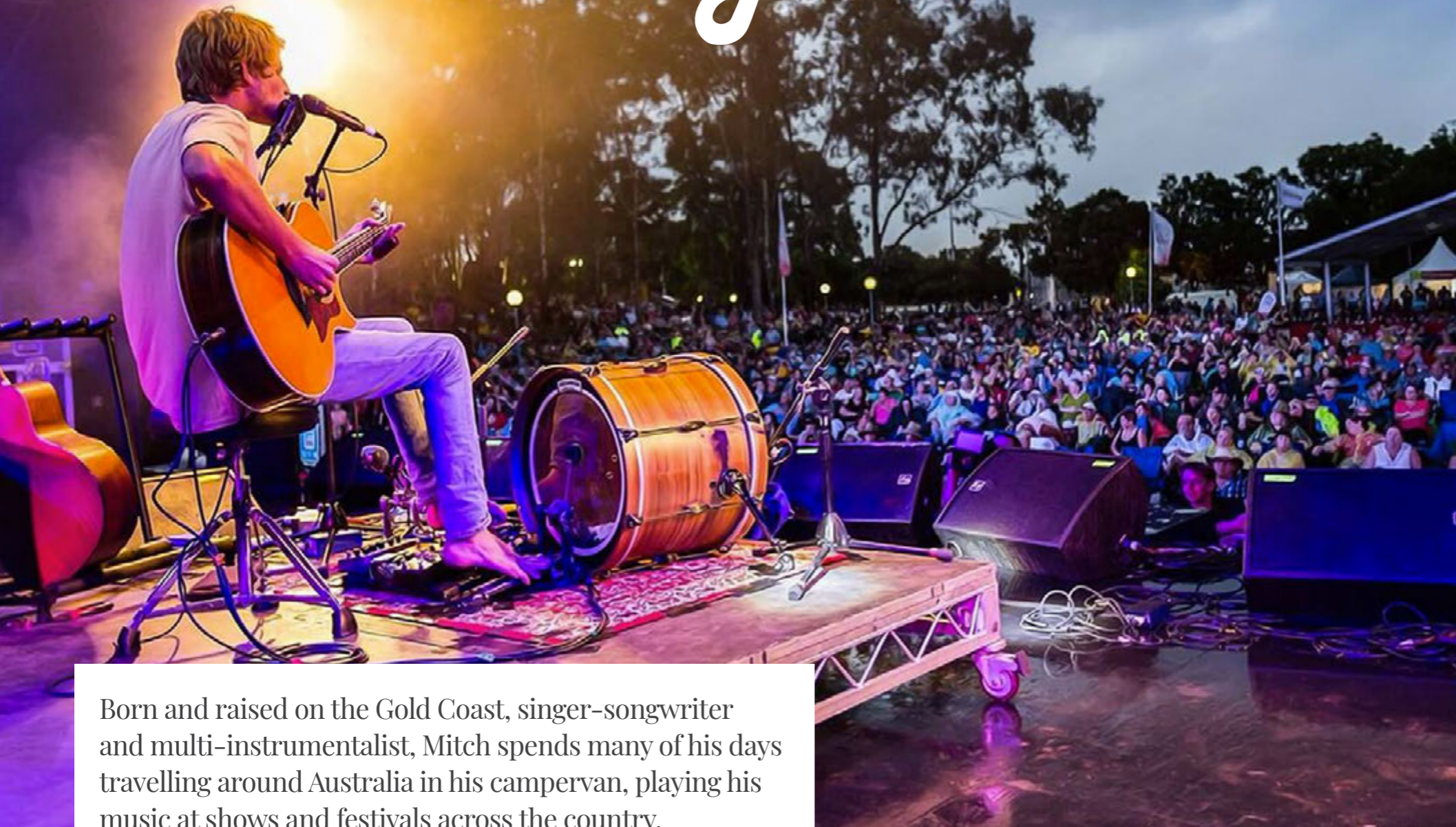


Credit: Jillian Mundy



Credit: Jillian Mundy

Mitch King



Born and raised on the Gold Coast, singer-songwriter and multi-instrumentalist, Mitch spends many of his days travelling around Australia in his campervan, playing his music at shows and festivals across the country.

Building his fanbase to over 40 million worldwide streams, Mitch King is well known for his honest, raw and dynamic live performances. Not limiting himself to one genre, Mitch blends vocals, electric and acoustic guitars, harmonica, kick drum and tambourine to create his unique southern blues and Australian folk n roots sound.

In 2014, Mitch independently released his first album, A Life Under The Sun. The single 'Coming Back' reached new heights when it was picked up by the US football team the Green Bay Packers, who played his song at their season opener game and shared it across their social media. The song has since had over 25 million streams on US Pandora radio and average of 250,000 monthly listeners.

Mitch then released EP, Southerly Change in 2016. It went straight to the top of the blues chart, where it remained for 10 days straight. More recently he's had success with a bunch of single releases with his single "Burning" amassing over 3 million Spotify streams.

He has graced many festival stages the likes of the Tamworth Country Music Festival, St Kilda Festival and Blues on Broadbeach, and supported artists such as Tones And I, America The Band, and Supertramp's Roger Hodgson.

In January 2021 Mitch announced his signing to the Late Michael Gudinski's newest label, Reclusive Records.



"I have always been fascinated with the one-man band concept. After seeing Mitch perform live, I knew there was something unique and special about him. The fact that Mitch's song 'Coming Back' was used and embraced by the NFL team The Green Bay Packers was a true testament to his song writing and I was surprised that he wasn't already signed after that! The reaction we had after Mitch performed 5 Seconds Of Summer's track 'Youngblood' on The State Of Music was incredible and it made it clear that we had to have him on Reclusive."

– Michael Gudinski

During 2020 and 2021 Mitch dedicated much of his time focusing on writing new music, collaborating with artists such as Mark Lizotte "Diesel", The Temper Trap and Pierce Brothers. And in September 2021 he released his anticipated sophomore EP "The Open Doors". 🎶

Mitch will be appearing at the
Festival of King Island for more
information visit:
foki.com.au





ANGE BOXALL

Tasmanian songstress, Ange Boxall, has performed, written, recorded and released albums throughout the USA, UK, Europe and Australia.

Ange has been a professional Singer-Songwriter, Performer and Recording Artist for 25 years. Graduating with a Bachelor of Fine Arts from the UTAS Art School in 1996, double-majoring in painting and photography. It was during this time that she began her professional music career which would take her to Melbourne and then further afield to London, Europe and the US.

Recently Ange recorded her 6th studio album, 'Skipping Stone' produced by Paul McKercher and Pete Cornelius, due for release in early 2023.

Paul McKercher has received five ARIA Awards and produced over 50 albums. He has worked with Australian artists Josh Pyke, Sarah Blasko, Art vs Science, Bertie Blackman, Ball Park Music, Papa vs Pretty, You Am I, Pete Murray, The Cruel Sea, Augie March, Motor Ace, Eskimo Joe, among others.





“There is a Tasmanian sound.

It's Ange Boxall. Wow!”

- JD Souther (USA)

"Now there's a Tasmanian Devil but Ange is the Tasmanian Angel... like hearing sunshine"

- Jim Lauderdale (USA)

Ange has performed with artists like Ron Sexsmith, Icehouse and Tim Freedman. She has showcased at festivals such as SXSW in Austin Texas, Folk Alliance in Memphis Tennessee, the Americana Music Festival in Nashville, Tennessee, London Calling, Maverick and Americana Fest in London UK, Popkomm in Germany as well as many in her home state of Tasmania, including Festivale, The Taste of Tasmania, Festival of Voices, Cygnet Folk Festival and Dark Mofos Winter Feast.

Now residing on the east coast of Tasmania, her music continues to flourish as she responds to the Tasmanian landscape physically, metaphorically, and politically. 🍷

Signing to Checked Label Services / Sony Music Australia in late 2016, the physical release of Ange's album 'Into The Wind' debuted at #11 on the Official ARIA Australian Albums Chart across all genres, as well as #27 on the albums chart for releases from all over the world!

'A Heart That Loves Like Mine' was immediately added to the ABC Radio Local playlist Nationally, where it remains in rotation. This was Ange's first release since moving home to Australia after a decade living abroad in London, Nashville and France. Into The Wind was recorded across Nashville, London and Melbourne - a true 'world record' ;)

"Ange Boxall is a tender-hearted optimist whose songs are delicate, honest and glorious. Pretty melodies meet considered, beautiful lyrics. And her voice. It's as lovely as her smile. Which is to say, it's electric."

- Emma Swift (AUS/USA)

Based between London and Nashville for over a decade, Ange has co-written, recorded and performed with hugely successful songwriters and musicians, including J.D Souther of Eagles and Linda Ronstadt fame, multi-Grammy Award winner Jim Lauderdale, and the late Bones Hillman of Australia's own Midnight Oil.



Ange Boxall will be appearing at the Festival of King Island for more information visit: foki.com.au




SHARP TRAVELLERS *Club*

Members will be the first to know of new flights, holiday packages, promotions competitions and exclusive offers.

- New look that is easier to navigate
- Ability to access all your bookings
- Ability to change & cancel bookings
- Book online using your credits
- Manage and change contact details
- Ability subscribe to receive news, offers and discounts

To join the travel club simply visit –
sharpairlines.com.au
or call our
**reservations team on
1300 55 66 94**

WHERE WE FLY CHOOSE YOUR DESTINATION



FOKI 24

WWW.FOKI.COM.AU #FESTIVALOFKINGISLAND



2-3 FEB

LINEUP

2024

**EASTBOUND BUZZ - IS MAN KIND - MITCH KING
THE BAD DAD ORCHESTRA - THE SMOKIN' ELMORES
ANGE BOXALL - MIKE ELRINGTON - JOEL & DAVE HAVEA
SKOOTERZ - BI-DE WAY - RUSTY FALCON
PETER VANDENBURG & ALLAN CRAWFORD
DJ LATEENA & KOBI - HOLLYWOOD BARNES**

OUR SPONSORS

